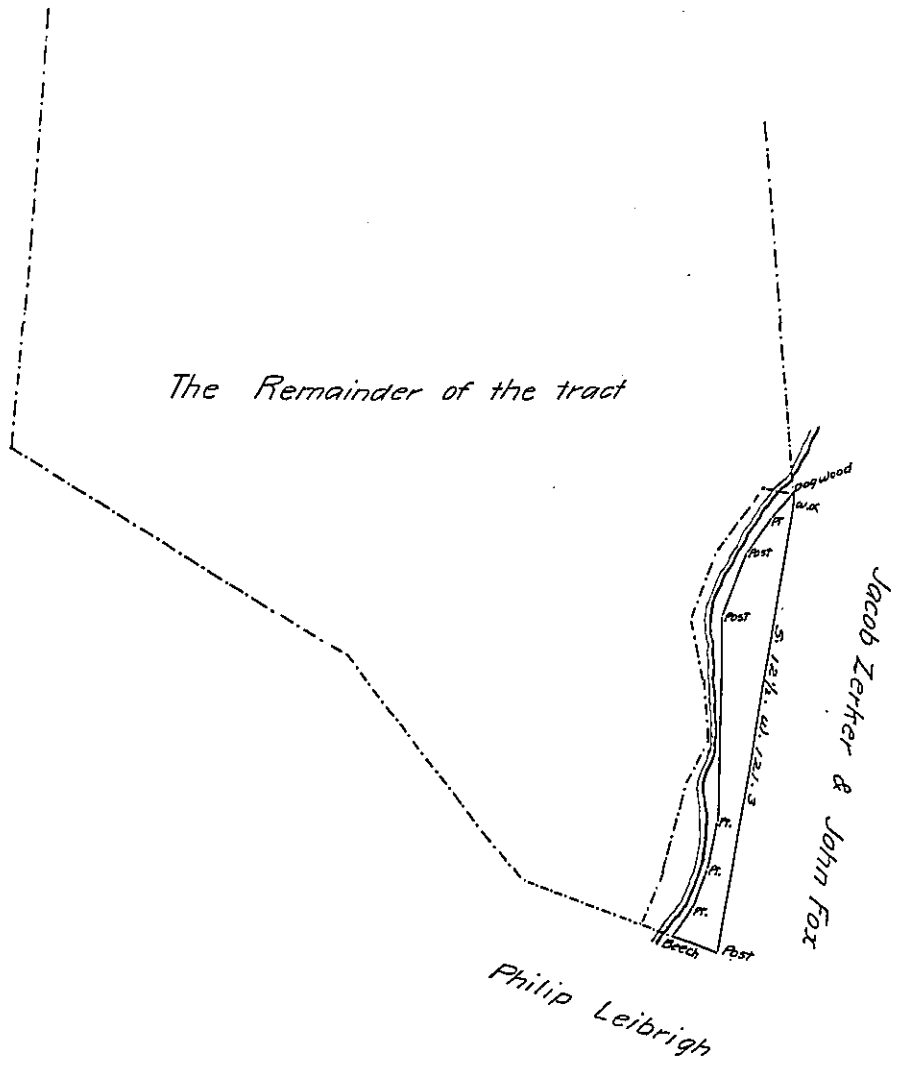


- Beginning at a post
1. N. 67 1/2. W. 13 Beech
 2. N. 41. E. 11.3 post
 3. N. 21 1/2. E. 10.5 post
 4. N. 17. E. 13.5 pt.
 5. N. 3. E. 55.3 pt.
 6. N. 23. E. 19. pt.
 7. N. 38. E. 10.4 pt.
 8. N. 44 1/2. E. 8.3 Dogwood
 9. S. 3 1/2. E. 2.2 pt.
 10. S. 12 1/2. W. 121.3 to Beg.



Surveyed October 18th. 1812 for George Backenstose, the above described tract of land situate in West Hanover Township Dauphin County, containing Six acres and Allowance of six pCent part of 340 Acres and allowance aforesaid, on Warrant of John Hutchinson of the 21st. November 1744.

Thomas Smith D.S.

To Richard T. Leech Esquire
Surveyor General Pa.

IN TESTIMONY that the above is a copy of the original remaining on file in the Department of Internal Affairs of Pennsylvania, made conformably to an Act of Assembly approved the 16th day of February, 1833, I have hereunto set my Hand and caused the Seal of said Department to be affixed at Harrisburg, this

third day of August, 1905

George D. ...
Secretary of Internal Affairs.