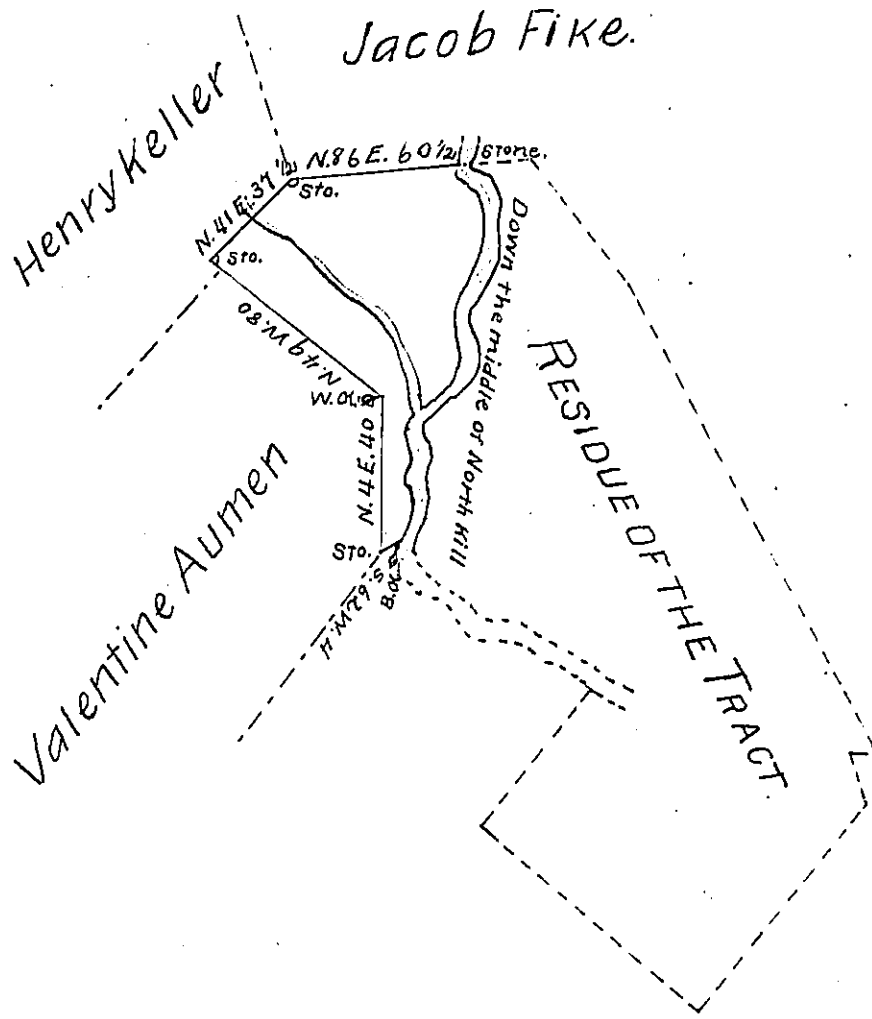


COURSES & DISTANCES
DOWN NORTH KILL CREEK
VIZE



S. 8 1/4 W. 5.2
S. 85 1/2 E. 7.
S. 14 1/2 E 7.
S. 29 W. 8.7
S. 17 1/2 E. 8.3
S. 40 1/4 W. 15.5
S. 11 W. 9.7
S. 25 E. 12.5
S. 50 3/4 W. 20.4
S. 83 W. 2.3
S. 9 W. 8.2
S. 2 E. 27.7
S. 23 W. 14.7 To B.C.
<hr/> 147.2

Situate in Tulpehoccon Township Berks County
Containing Twenty nine Acres 116 perches and allow-
ance of Six per Cent for Roads &c part of 178 acres
and allowance &c Originally Surveyd to Hans
Keener by Virtue of a Warrant bearing date the 25th
day of October 1739.

Resurveyd the above for Valentine Auman
the 8th day of June 1821

per Jno. V. Epler D.S.

To Samuel Cochran Esqr }
Surveyor General }

IN TESTIMONY that the above is a copy of the original remaining on file in
the Department of Internal Affairs of Pennsylvania, made
conformably to an Act of Assembly approved the 16th day of
February, 1833, I have hereunto set my Hand and caused
the Seal of said Department to be affixed at Harrisburg,
this Twenty-fourth day of August 1903

Isaac B. Brown
Secretary of Internal Affairs.