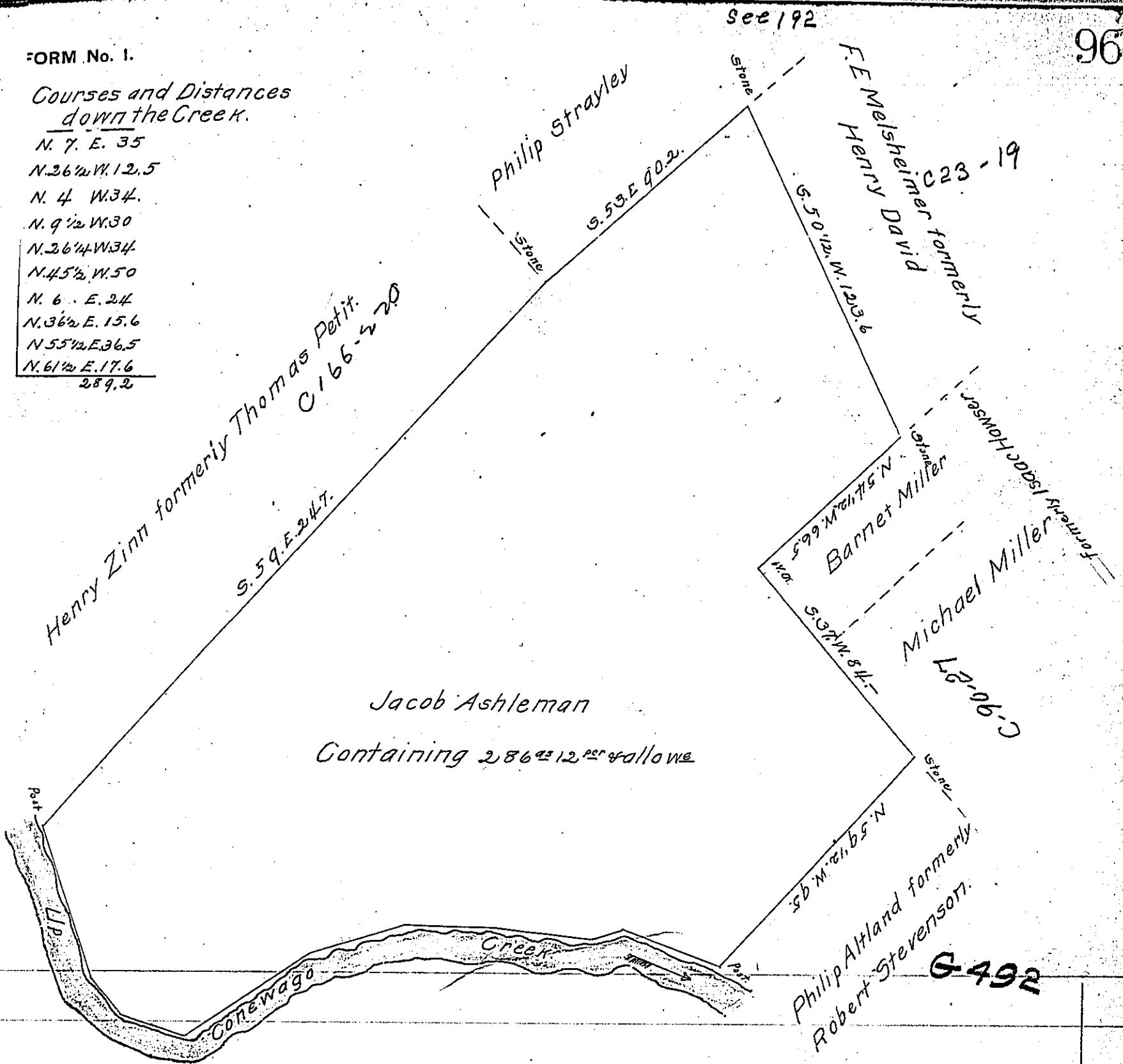


Courses and Distances down the Creek.

- N. 7. E. 35
- N. 26 1/2 W. 12.5
- N. 4 W. 34.
- N. 9 1/2 W. 30
- N. 26 1/4 W. 34
- N. 45 1/2 W. 50
- N. 6 E. 24
- N. 36 1/2 E. 15.6
- N. 55 1/2 E. 36.5
- N. 61 1/2 E. 17.6
- 289.2



Jacob Ashleman
Containing 286^{ac} 12^{pc} & allowe

Situates in Dover township in the County of York containing as above set forth 286^{ac} 12 perches and allowance &c. Originally Surveyed in pursuance of a Warrant granted to Jacob Ashleman for 200^{ac} dated the 18th day of October A. D. 1753. Re-surveyed by the Old lines on the 20th day of August 1824. and now this 19th day of July 1827 the same is returned for confirmation at the request of the present owners &c.

Daniel Small, D.S.

To Gabriel Hiesten Esq }
Surveyor General }

IN TESTIMONY that the above is a copy of the original remaining on file in the Department of Internal Affairs of Pennsylvania, made conformably to an Act of Assembly approved the 16th day of February, 1833, I have hereunto set my Hand and caused the Seal of said Department to be affixed at Harrisburg, this Fifth day of October 1903

Isaac B. Brown
Secretary of Internal Affairs.