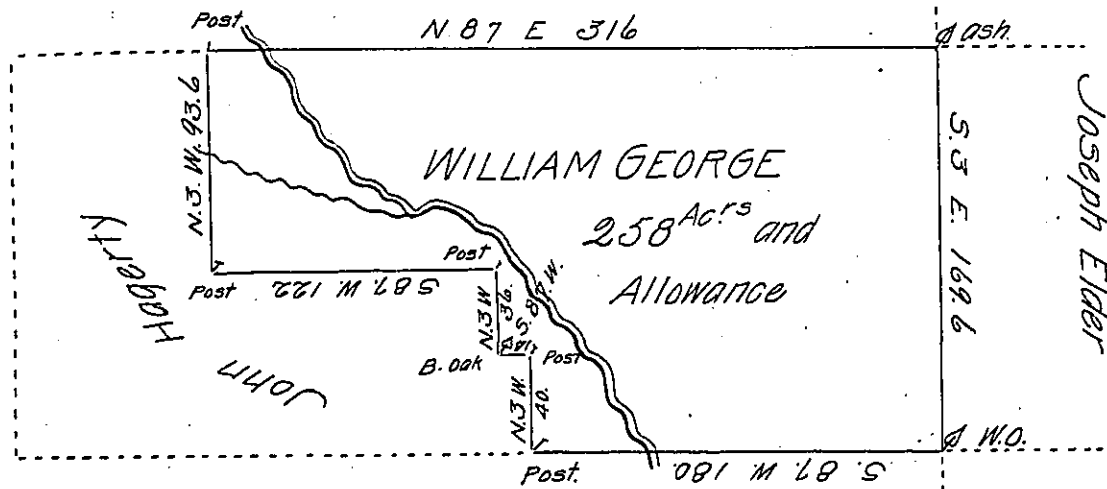


Thomas White



THOMAS TAYLOR

Situate in Slippery Rock Township Mercer County Containing Two hundred fifty eight Acres and Allowance. Survey'd the 11th Nov: 1815 In pursuance of a Warrant Granted to William George. March 9th 1815.

Richd T. Leech Esq:
Surveyor General.

Jos. Asheton D.S.
Mercer County.

Note. A comfortable Square Log house for Habitation, a Log Barn, Orchard, &c. and fifty Acres under Cultivation.

IN TESTIMONY that the above is a copy of the original remaining on file in the Department of Internal Affairs of Pennsylvania, made conformably to an Act of Assembly approved the 16th day of February, 1833, I have hereunto set my Hand and caused the Seal of said Department to be affixed at Harrisburg, this twentieth day of December 1904.

Loac R. Brown
Secretary of Internal Affairs.