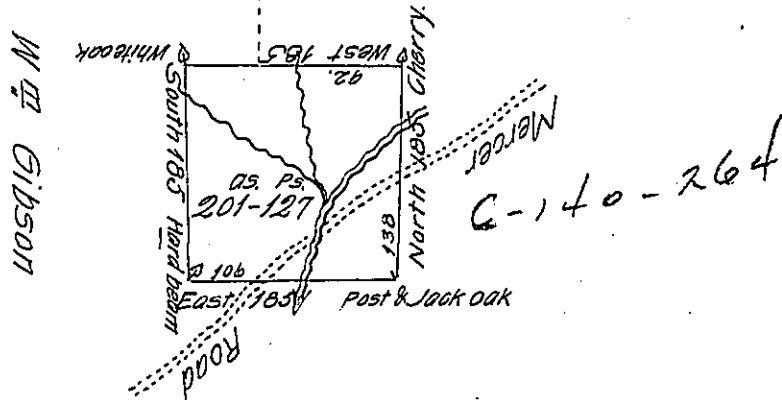


J. Gilleland

S. Hays



R. Temple
C-227-233

Draft of a tract of land situate in French creek township, Venango County, west of the Allegheny river, on the waters of Sandy creek, containing two hundred and one acres and one hundred and twenty-seven perches and allowance, adjoining lands of Samuel Hays and James Gilleland on the north, and on the west by lands of the estate of William Gibson. Surveyed 20th February 1819, in pursuance of a warrant granted to James Gilleland and John McGlaran, ^{Exrs of Jas. McGlaran} dated 4th January 1819.

John Irwin D.S.

Jacob Spangler Esq.

Surveyor General Pa.

IN TESTIMONY that the above is a copy of the original remaining on file in the Department of Internal Affairs of Pennsylvania, made conformably to an Act of Assembly approved the 16th day of February, 1833, I have hereunto set my Hand and caused the Seal of said Department to be affixed at Harrisburg, this nineteenth day of January 1905.

George D. Irwin
Secretary of Internal Affairs