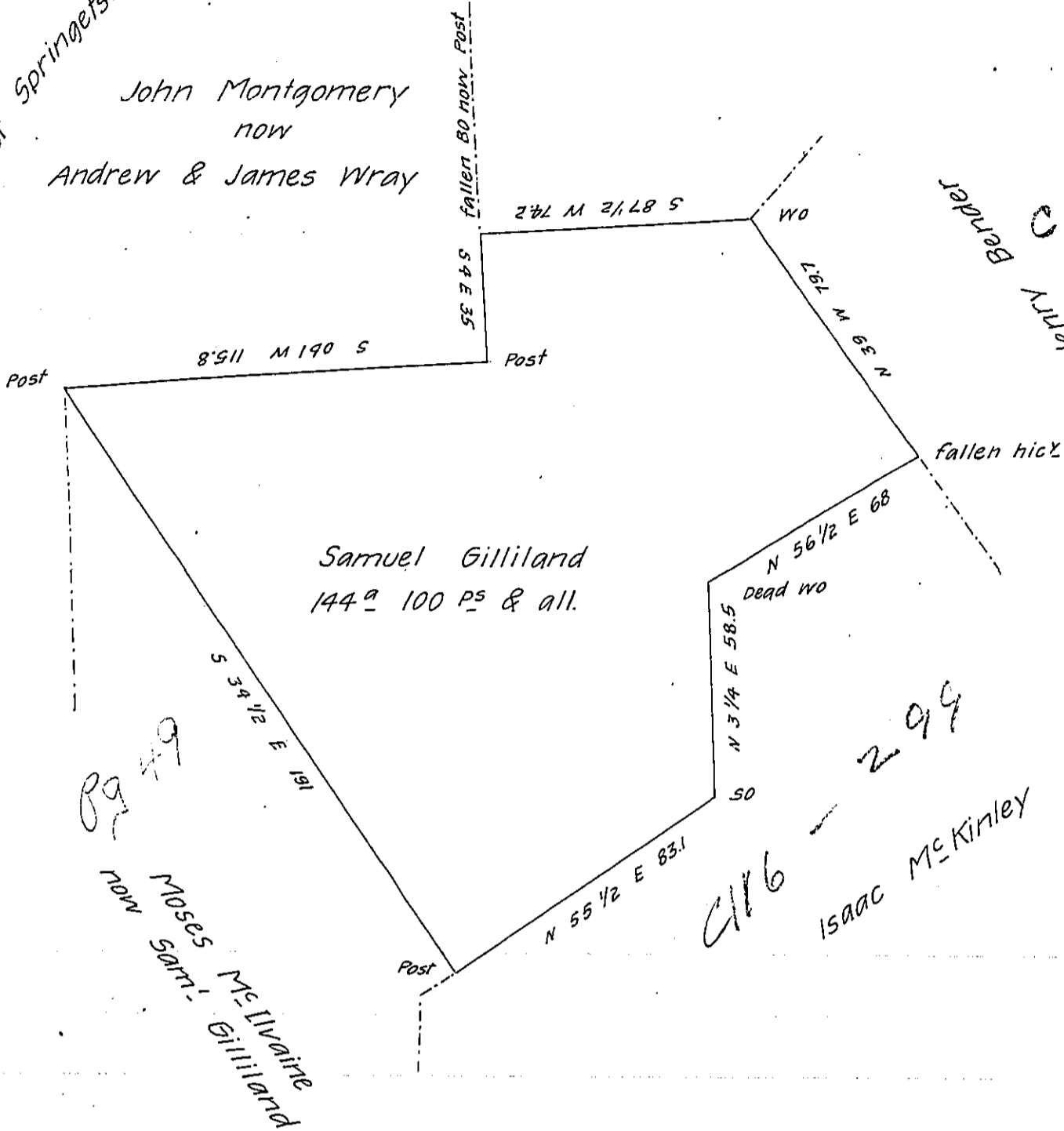


Called part of the Manor of Springettsbury

John Montgomery
now
Andrew & James Wray

Henry Bender
C 9 - 223



Moses McIlvaine
now Saml Gilliland

Situated in Marallen Township Adams County and surveyed
the 16th day of June 1800 in pursuance of a warrant for 230^a
dated the 2nd day of April 1800, granted to Saml Gilliland.

By Moses McClean D.S.

Examined and certified the 27th August 1808.

To Saml Cochran Esq

By Saml Sloan D.S.

Surveyor General.

IN TESTIMONY that the above is a copy of the original remaining on file in
the Department of Internal Affairs of Pennsylvania, made
conformably to an Act of Assembly approved the 16th day of
February, 1833, I have hereunto set my Hand and caused
the Seal of said Department to be affixed at Harrisburg,
this first day of February 1906.

Isaac P. Brown
Secretary of Internal Affairs.