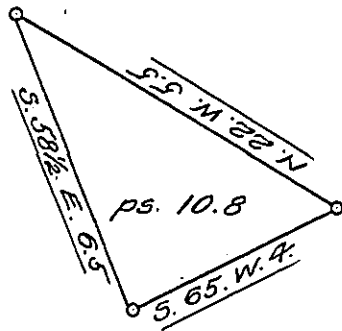


York County Shore



Lancaster County Shore

A Draught of Britain Island situate in the river Susquehanna in Little Britain township Lancaster County opposite to land of Stephen T. Cooper on the York County shore about one hundred perches from the main land and about fifty perches westward of Jonathan Hough Senes Fishery Containing ten perches and eight tenths Strict Measure surveyed in pursuance of Warrant dated 11<sup>th</sup> day of Sept(ober)ber A.D. 1815 Granted to Timothy Hains.

p<sup>c</sup> Jacob Hibshman D.S.

To Jacob Spangler Esq<sup>r</sup> }  
 Surveyor General. }

IN TESTIMONY that the above is a copy of the original remaining on file in the Department of Internal Affairs of Pennsylvania, made conformably to an Act of Assembly approved the 16th day of February 1833, I have hereunto set my hand and caused the Seal of said Department to be affixed at Harrisburg, this twenty first day of January 1908.

*Henry Hoover*  
 Secretary of Internal Affairs.