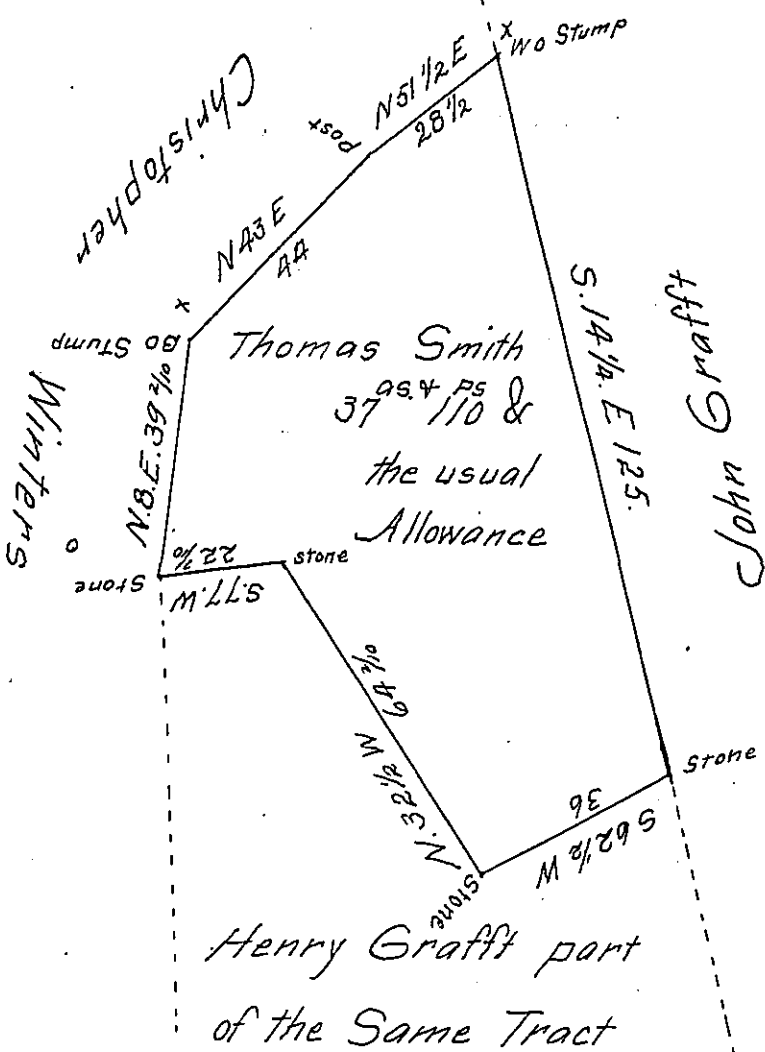


FORM NO 1.



A Draught of a Tract of Land Situate in Martuk Township in the County of Lancaster Containing thirty Seven Acres and One hundred and Ten perches and the usual Allowance of Six per Cent for Roads being part of a Larger Tract Containing Seventy three acres & an half - Surveyed in pursuance of a Warrant bearing date the 22<sup>th</sup> of November A.D. 1749. Surveyed by John Ramsey, for Christopher Winters the 26<sup>th</sup> of August A.D. 1809

Returned the 30<sup>th</sup> of August A.D. 1809

To Andrew Porter Esq<sup>r</sup> }  
Surveyor General }

J<sup>r</sup> Jacob Hibshman D.S.

IN TESTIMONY that the above is a copy of the original remaining on file in the Department of Internal Affairs of Pennsylvania, made conformably to an Act of Assembly approved the 16th day of February, 1833, I have hereunto set my Hand and caused the Seal of said Department to be affixed at Harrisburg, this 25<sup>th</sup> day of October 1907

Henry Houck  
Secretary of Internal Affairs.