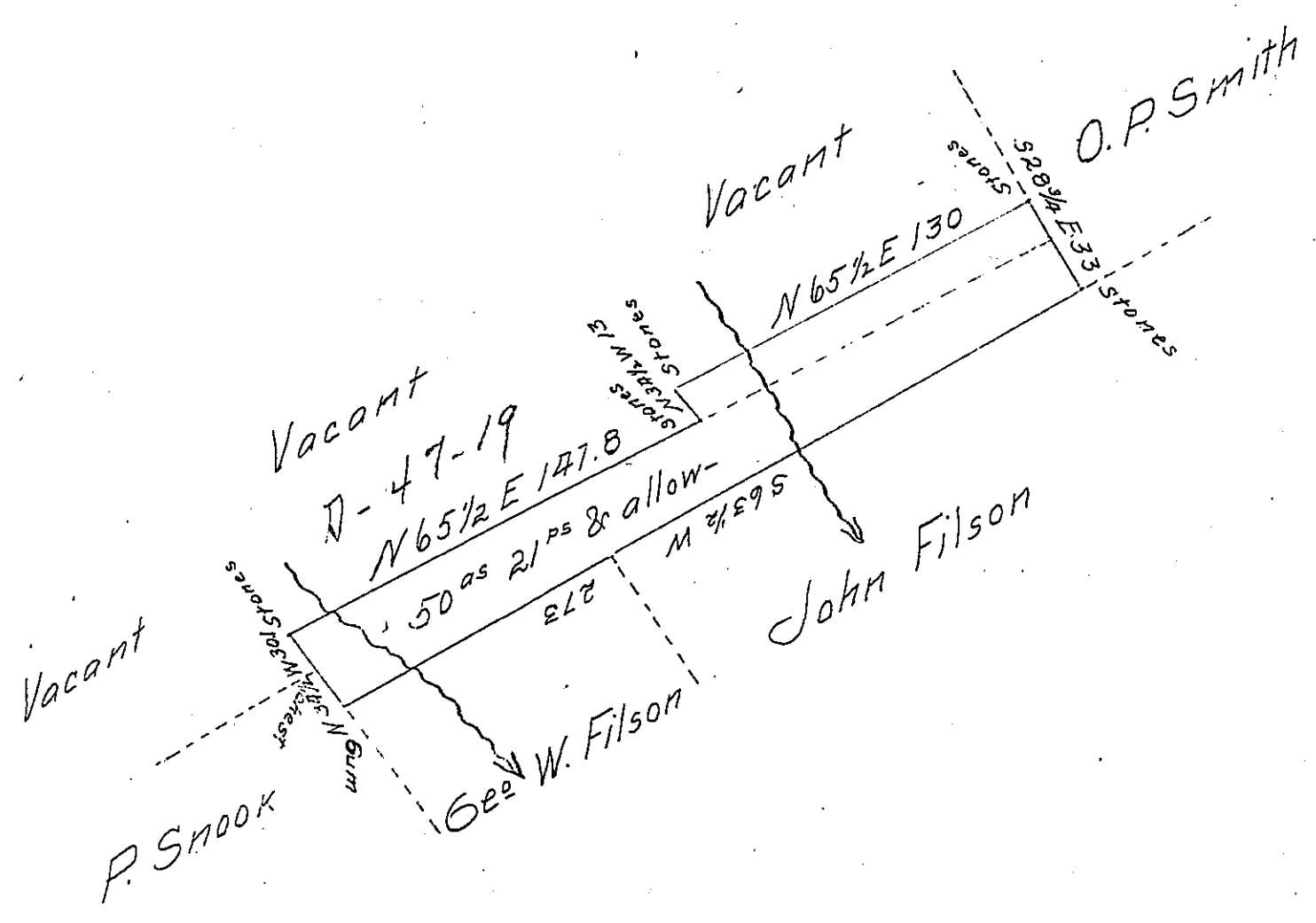


FORM NO 1.



A draught of fifty acres and twenty one perches
of land with the allowance of Six per cent for
Roads &c. Situate in Armagh Township, Mifflin County
Surveyed June 7th & 8th 1859, in pursuance of a War-
rant to George W. Filson dated Decr 2nd 1856

To John Rowe Esq^r }
Surveyor General of Pa) John Swartzell C.S.

IN TESTIMONY that the above is a copy of the original remaining on file in
the Department of Internal Affairs of Pennsylvania, made
conformably to an Act of Assembly approved the 16th day of
February, 1833, I have hereunto set my Hand and caused
the Seal of said Department to be affixed at Harrisburg,
this Twentieth day of January 1908

Henry Howell
Secretary of Internal Affairs.