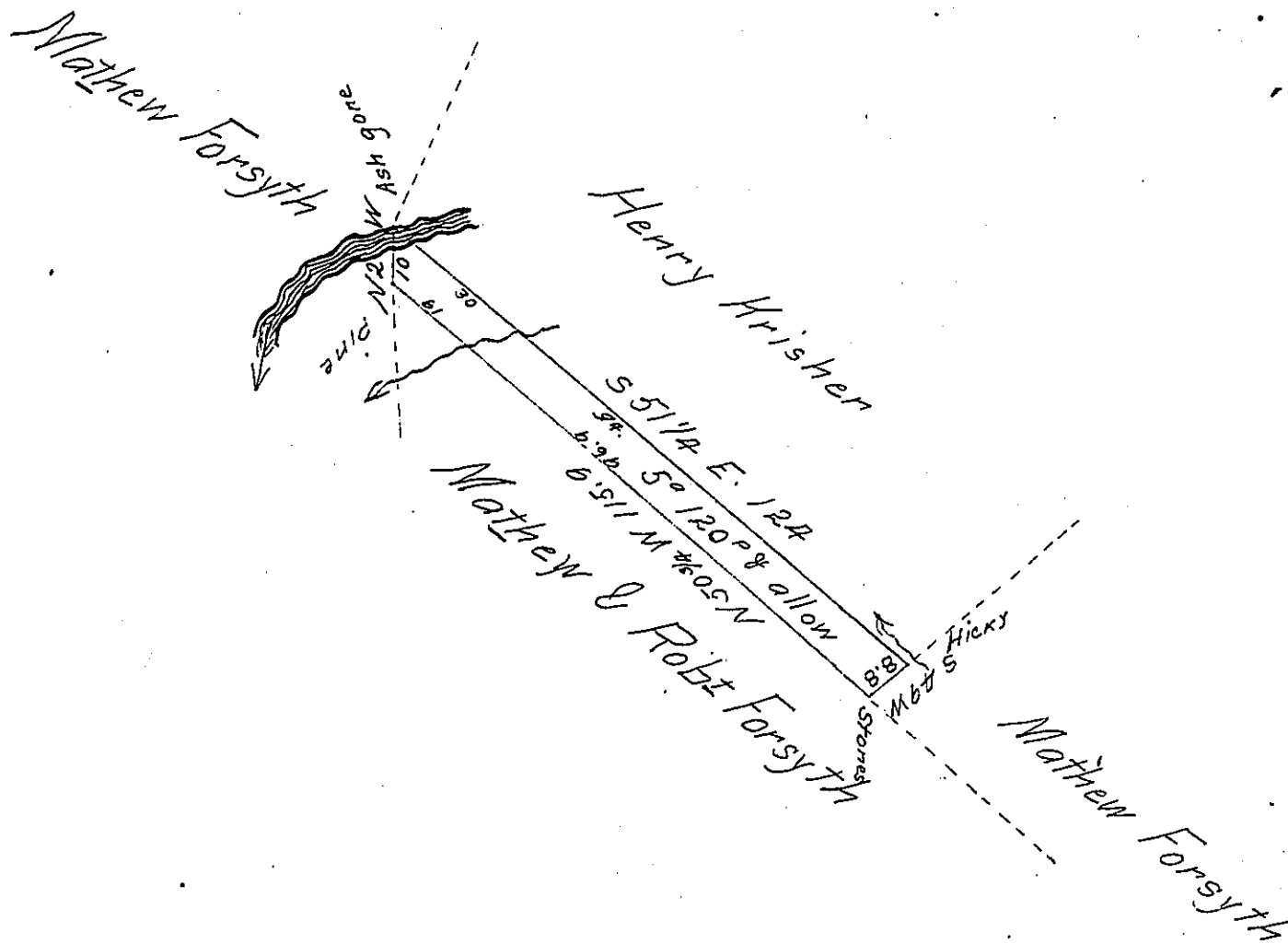


FORM NO 1.



A draught of five acres and one hundred and twenty perches of land, with the allowance of Six per cent for Roads &c. Situate in Derry Township, Millin County. Surveyed June 8th 1857 in pursuance of a warrant to Mathew Forsyth dated Aug 1st 1856.

To John Rowe Esq
 Surveyor General of Pa }

John Swartzell D.S.

IN TESTIMONY that the above is a copy of the original remaining on file in the Department of Internal Affairs of Pennsylvania, made conformably to an Act of Assembly approved the 16th day of February, 1833, I have hereunto set my Hand and caused the Seal of said Department to be affixed at Harrisburg, this Twentieth day of January 1908

Henry Houch
 Secretary of Internal Affairs.