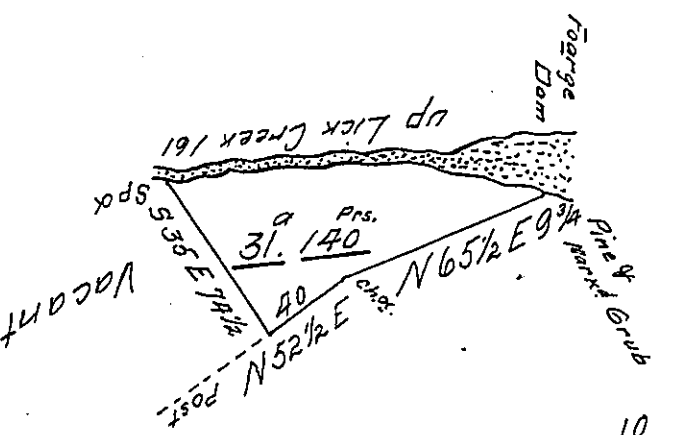


FORM NO. 1.

Course & Distance
 Up Creek -
 N 82 W 39
 N 78 W 28
 S 82 W 94
 161



Done of
 Anderson in right
 of
 Mc Donald

Draught of a Tract of Land Situate in Milford Township Mifflin County Containing Thirty one Acres & 140 perches and the Allowance of Six per Cent for Roads &c. Surveyd for Jane Anderson the 28th Day of June 1797 - In persuance of a Warrant Dated the 10th Day of January 1794 -

William Harris D.S.

*To Samuel Cochran Esquire }
 Survr Genl of Pennsylvania }*

IN TESTIMONY that the above is a copy of the original remaining on file in the Department of Internal Affairs of Pennsylvania, made conformably to an Act of Assembly approved the 16th day of February 1833, I have hereunto set my hand and caused the Seal of said Department to be affixed at Harrisburg, this Twenty-ninth day of January 1908

Henry Howell
 Secretary of Internal Affairs.