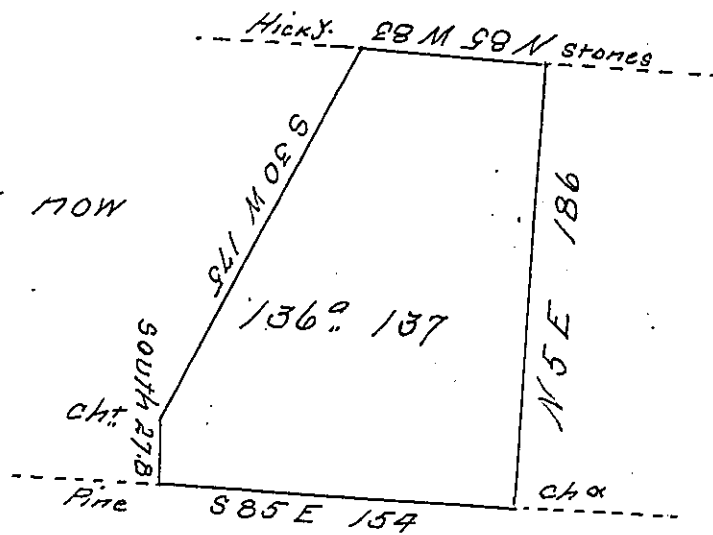


Lewis Evans

Gab! Fry now
Wm Lloyd



John M Gary

A draught of a tract of Land containing 136 A. 137
 perches with the usual allowance of Six per Cent for
 Roads &c. Situate in Greenwood now Delaware township
 Juniata formerly Mifflin County. Surveyed October 15th
 1814 by virtue of a Warrant to Peter Burris, dated Sept.
 23^d 1814

To	By Wm McAlister Ass't
John Laporte Esq	To M. M. Monohan
Sun Genl of Penna	Dept of Mifflin County
	Joseph Middogh D.S

IN TESTIMONY that the above is a copy of the original remaining on file in
 the Department of Internal Affairs of Pennsylvania, made
 conformably to an Act of Assembly approved the 16th day of
 February, 1833, I have hereunto set my Hand and caused
 the Seal of said Department to be affixed at Harrisburg,
 this Twenty sixth day of February 1908

Henry Howard
 Secretary of Internal Affairs.