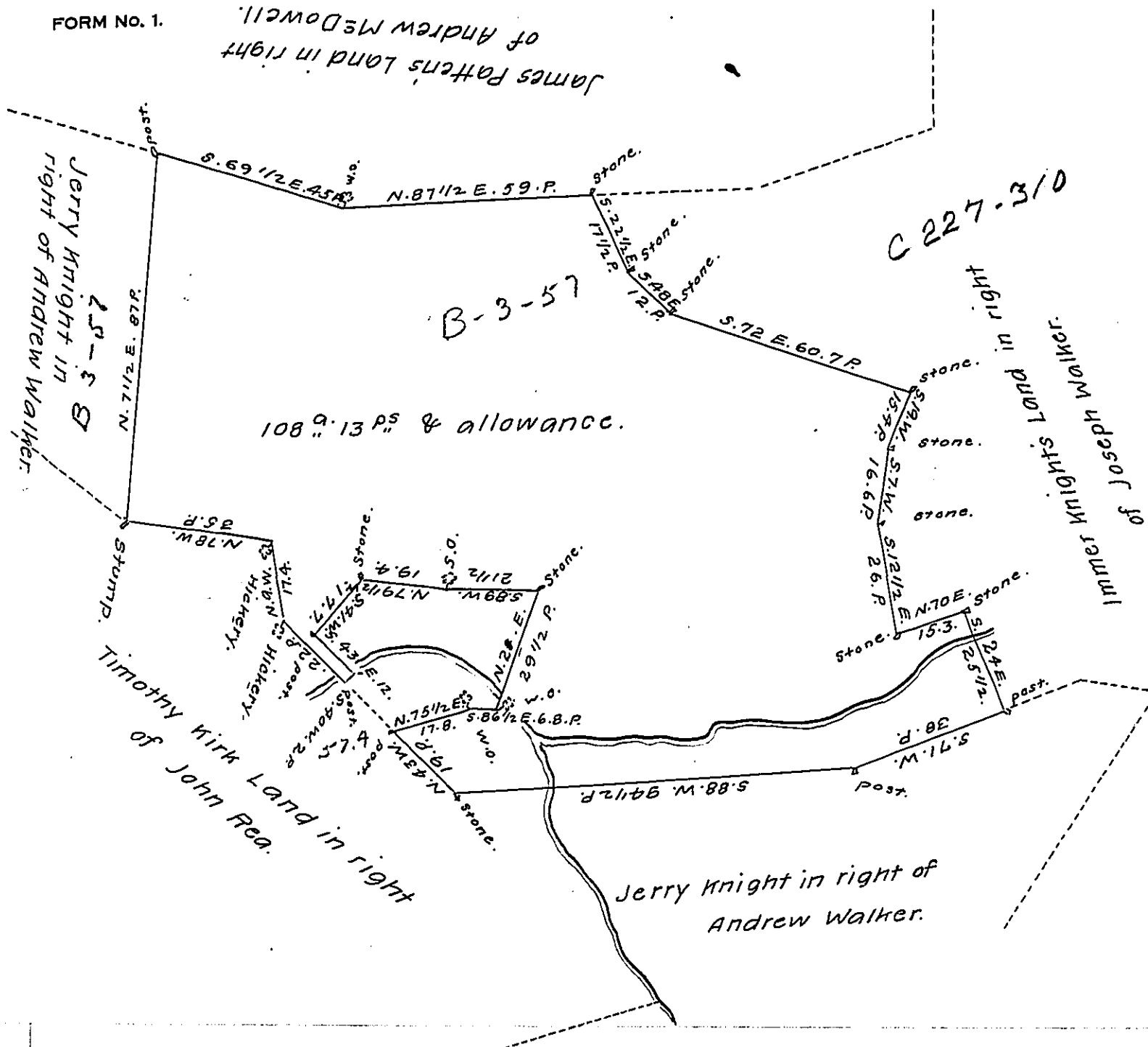


FORM No. 1.



The above Draught exhibits the Boundaries of a Tract of Land Situate in Lower Oxford Township Chester County Containing one hundred & eight Acres & thirteen perches & allowance of Six per Cent. &c. being a part of 245 Acres & Allowance which was surveyed the 30th of 1st Month January 1744. Surveyed February 22nd, 1814.

P^r Arthur Andrews J^r, D.S.

Richard T. Leech Esq^r,
Surveyor General.

IN TESTIMONY that the above is a copy of the original remaining on file in the Department of Internal Affairs of Pennsylvania, made conformably to an Act of Assembly approved the 16th day of February 1833, I have hereunto set my hand and caused the Seal of said Department to be affixed at Harrisburg, this sixth day of February, 1908.

Henry Houck
Secretary of Internal Affairs.