

RICH HILL TOWNSHIP

18.

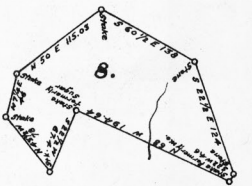
THO^{SE} THROCKMORTON, ET AL.
84 Acres & Allowance.
Warrant dated November 23, 1909.
Surveyed December 23, 1909.
Patented January 4, 1910
To Warrantees.
H-77-380.

19.

SNOWDEN FRY
38 1/2 Acres & Allowance.
Warrant dated October 7, 1845.
Surveyed May 5, 1846.
Patented January 16, 1847
To Abner Hope
H-46-45.

7.

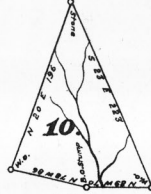
SAMUEL RINEHART
106 Ac. 70 P. & Allowance.
Warrant dated June 23, 1845.
13 Ac. 12 P. & Allowance.
Warrant dated March 6, 1846.
Surveyed March 22, 1846.
Patented October 12, 1846
To Samuel Rinehart
H-44-580.



Job S. JOHNSON
148 Ac. 152 P. & Allowance.
Warrant dated
December 17, 1901.
Surveyed January 7, 1902.
Patented January 31, 1902
To Job S. Johnson
H-76-101.

9.

S.W. FELTON
15 1/2 Ac. & Allowance.
Warrant dated August 2, 1876.
Surveyed December 15, 1876.
Patented August 3, 1876.
To S.W. Felton
H-74-353.



LEWIS MARTIN
90 Ac. 144 P. & Allowance.
Warrant dated December 16, 1838.
Surveyed April 13, 1839.
Patented October 17, 1851
To Lewis Martin
H-48-345.

11.

ICHBOD ROSS
9 Ac. 7 P. & Allowance.
Warrant dated July 9, 1838.
Surveyed September 14, 1838.
(Unpatented)

12.

ICHBOD ROSS
10 Ac. 143 P. & Allowance.
Warrant dated July 9, 1838.
Surveyed September 14, 1838.
(Unpatented)

13.

THOMAS R. CHEDISTER
20 Ac. 30 P. & Allowance.
Warrant dated October 2, 1833.
Surveyed November 6, 1833.
(Unpatented)

14.

THOMAS KNIGHT
3 Ac. 103 P. & Allowance.
Warrant dated
December 18, 1905.
Surveyed January 15, 1906.
Patented January 15, 1906
To Thomas Knight
H-77-182.

15.

HIRSH C. WOOD
8 Ac. 16 P. & Allowance.
Warrant dated October 2, 1850.
Surveyed October 5, 1850.
Patented September 10, 1878
To Joel J. Wood
H-72-250.

16.

THOMAS HOGE
104 Ac. & Allowance.
Warrant dated
December 19, 1810.
Surveyed March 10, 1811.
Patented March 10, 1811
To Thomas Hoge
H-30-287.

17.

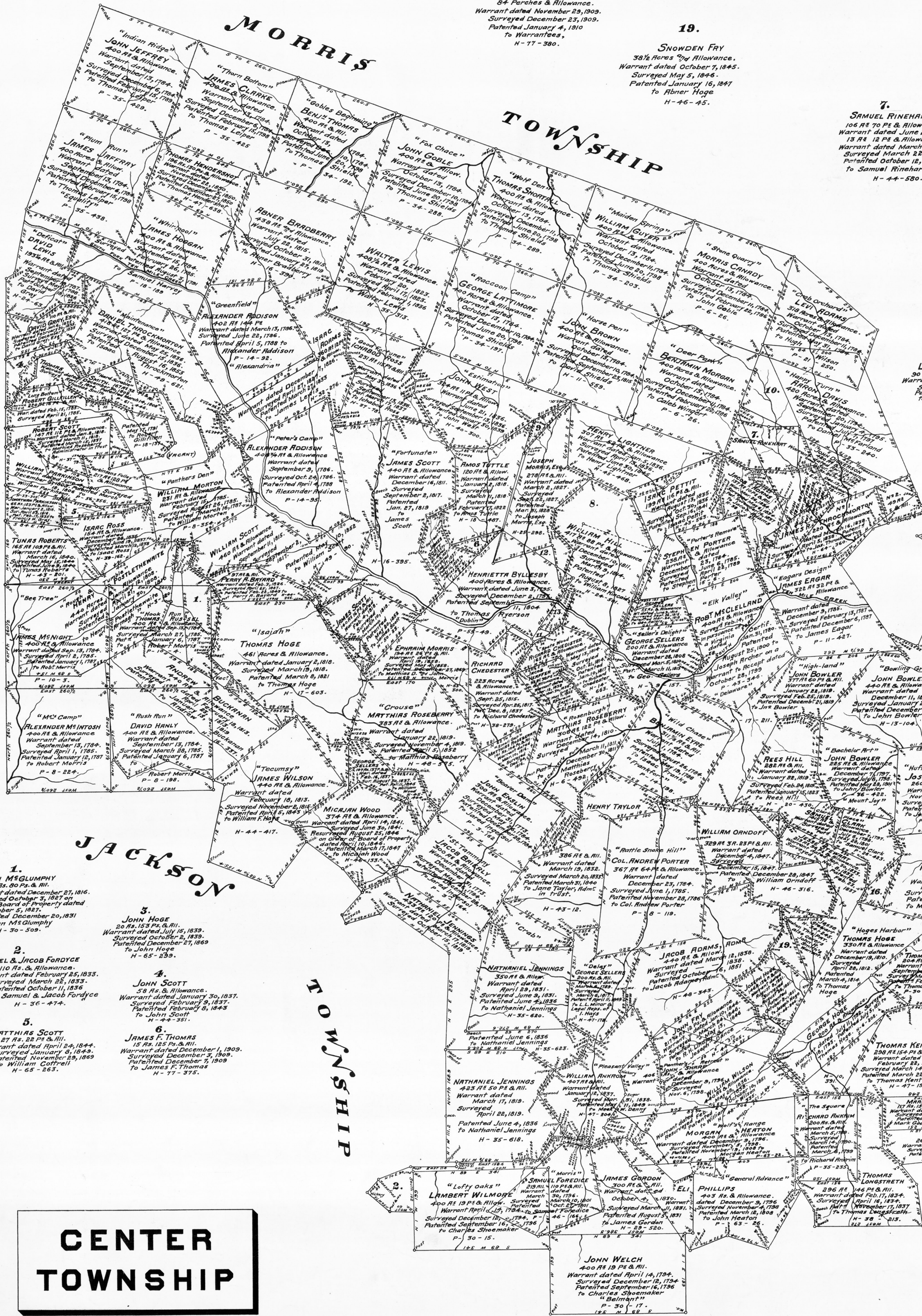
WILLIAM KENT
18 1/2 Ac. & Allowance.
Warrant dated March 16, 1848.
Surveyed April 25, 1848.
Patented June 27, 1848
To William Kent
H-46-535.

18.

JOHN R. SMITH
36 1/2 Ac. & Allowance.
Warrant dated January 19, 1820.
Surveyed February 23, 1837
To Jesse Stewart
H-34-245.
This Patent also covers
Jesse Stewart's warrant.

19.

JOHN WELCH
400 Ac. 19 P. & Allowance.
Warrant dated April 14, 1794.
Surveyed December 12, 1794.
Patented September 16, 1796
To Charles Sheemaker
H-30-17.



FRANKLIN TOWNSHIP

TOWNSHIP

5.

CENTER TOWNSHIP

JOHN H. CAMPBELL, CHIEF DRAFTSMAN.

In Testimony that the above is a draft of all the tracts of land situated in the township of Center and county of Greene constructed from and compared with the original drafts remaining on file in the Department of Internal Affairs of Pennsylvania, I have hereunto set my hand and caused the Seal of the said Department to be affixed, at Harrisburg, the eighteenth day of March, Anno Domini 1918.

Secretary of Internal Affairs