

PINE AND M<sup>c</sup> GANDLESS TWPS.

ALLEGHENY COUNTY

COUNTY

TWP.

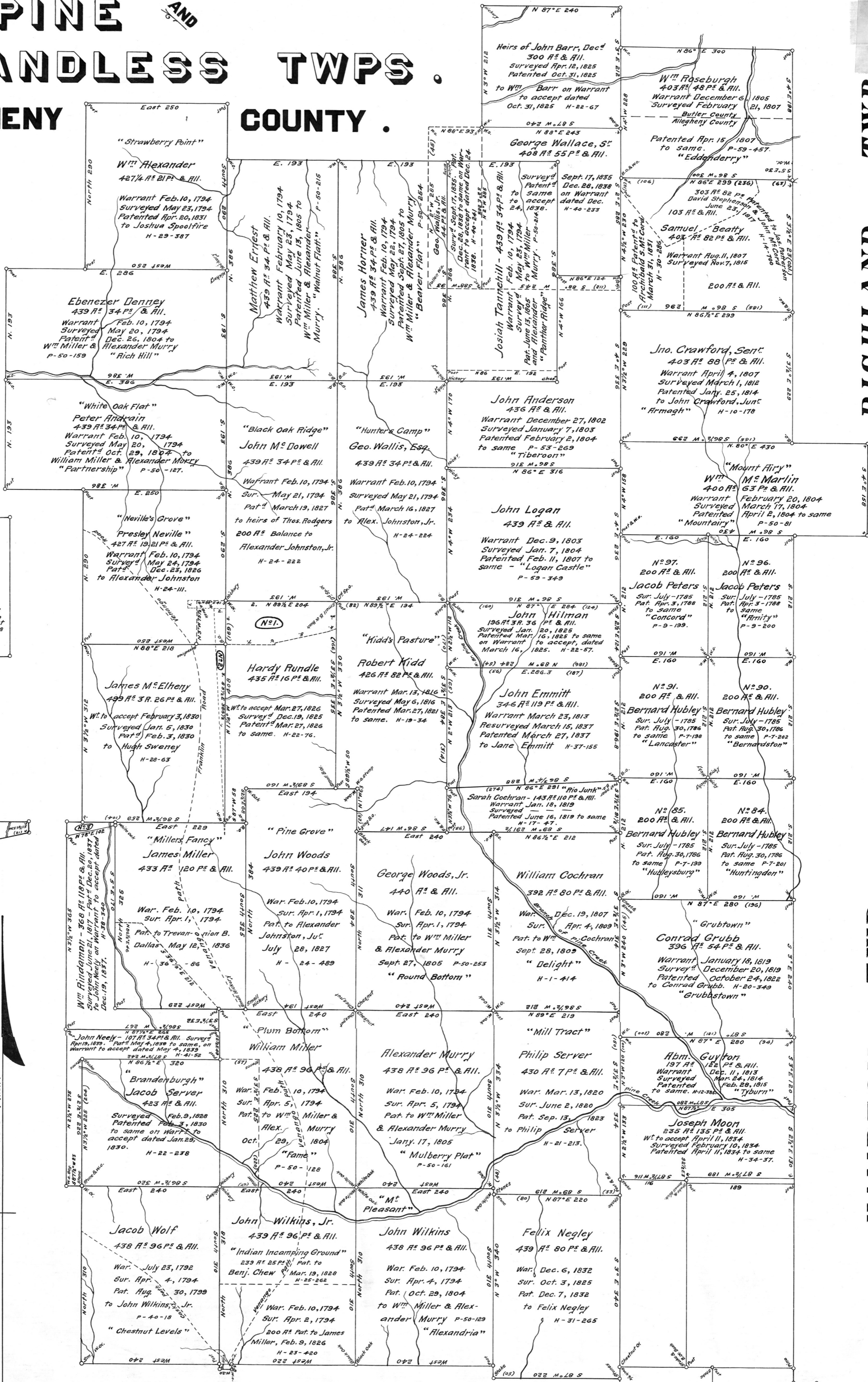
RICHLAND

TWP.

HAMPTON

MARSHALL TWP.

FRANKLIN TWP.



**N<sup>o</sup> 1.**

1. Post N 3/4 W 13  
 2. Post E 87 E 171  
 3. Post S 2 1/2 E 99  
 4. Post S 63 W 50  
 5. Post S 77 W 102  
 6. Post S 31 E 7  
 7. Post N 3/4 W 78  
 8. Post S 88 W 68

John Orme & Wife  
 93 A<sup>c</sup> 127 P<sup>s</sup> & All.  
 Surveyed March 14, 1838  
 Patented Mar. 31, 1838  
 to John & Ann Orme on Warrant  
 to accept dated Mar. 29, 1838  
 H-39-313

**N<sup>o</sup> 2.**

1. W. C. - N 3/4 W 395.3  
 2. Post - N 88 E 20  
 3. Post - S 74 E 395

John & Ann Orme  
 23 A<sup>c</sup> 46 P<sup>s</sup> & All.  
 Warrant Apr. 16, 1838  
 Surveyed May 15, 1838

**N<sup>o</sup> 3.** James Powelson - 87 A<sup>c</sup> 51 P<sup>s</sup> & All.  
 W. App. 6, 1840. Surveyed June 9, 1840  
 Pat. of Apr. 6, 1841 to same.  
 H-43-398.

Scale: 100 Feet = 1 Inch.