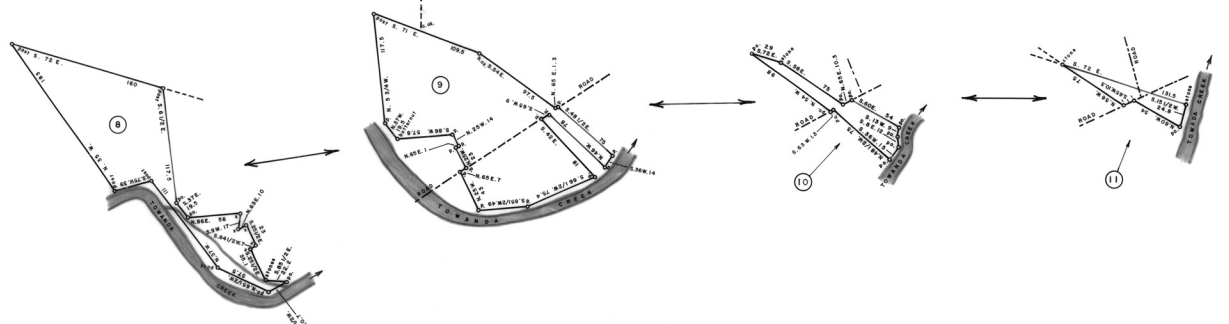


1	2	3	4	5	6	7	8	9	10
11	12	13	14	15	16	17	18	19	20
21	22	23	24	25	26	27	28	29	30
31	32	33	34	35	36	37	38	39	40
41	42	43	44	45	46	47	48	49	50
51	52	53	54	55	56	57	58	59	60
61	62	63	64	65	66	67	68	69	70
71	72	73	74	75	76	77	78	79	80
81	82	83	84	85	86	87	88	89	90
91	92	93	94	95	96	97	98	99	100

NOTE: All Borough, Township And County Lines, As Shown, Are Approximate As Of This Date And Should Not Be Considered Official On This Map.

NOTE: Tract No's. 9, 10 & 11, Shown Below, Are Drawn At The Scale Of 1" = 60 Rods.



A CONNECTED WARRANTEED TOWNSHIP MAP of Monroe Township in Bradford County. The warrants, surveys and patents, bearing respectively, the dates as above set forth, are constructed from and have been compared with the original drafts, on file in the Division of Land Records, Bureau of Archives and History, Historical and Museum Commission, Commonwealth Of Pennsylvania, under the direction of Edward D. Price, Chief.

IN TESTIMONY WHEREOF, I have hereunto set my hand and caused the seal of the said Commission to be affixed at Harrisburg, Pennsylvania, this thirtieth day of December A.D., one thousand nine hundred and eighty three.



LARRY E. TISE, Executive Director, Historical and Museum Commission



SCALE: 1" = 100 RODS

NORTH