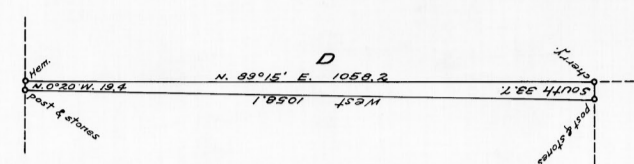


C O R Y D O N T W P .

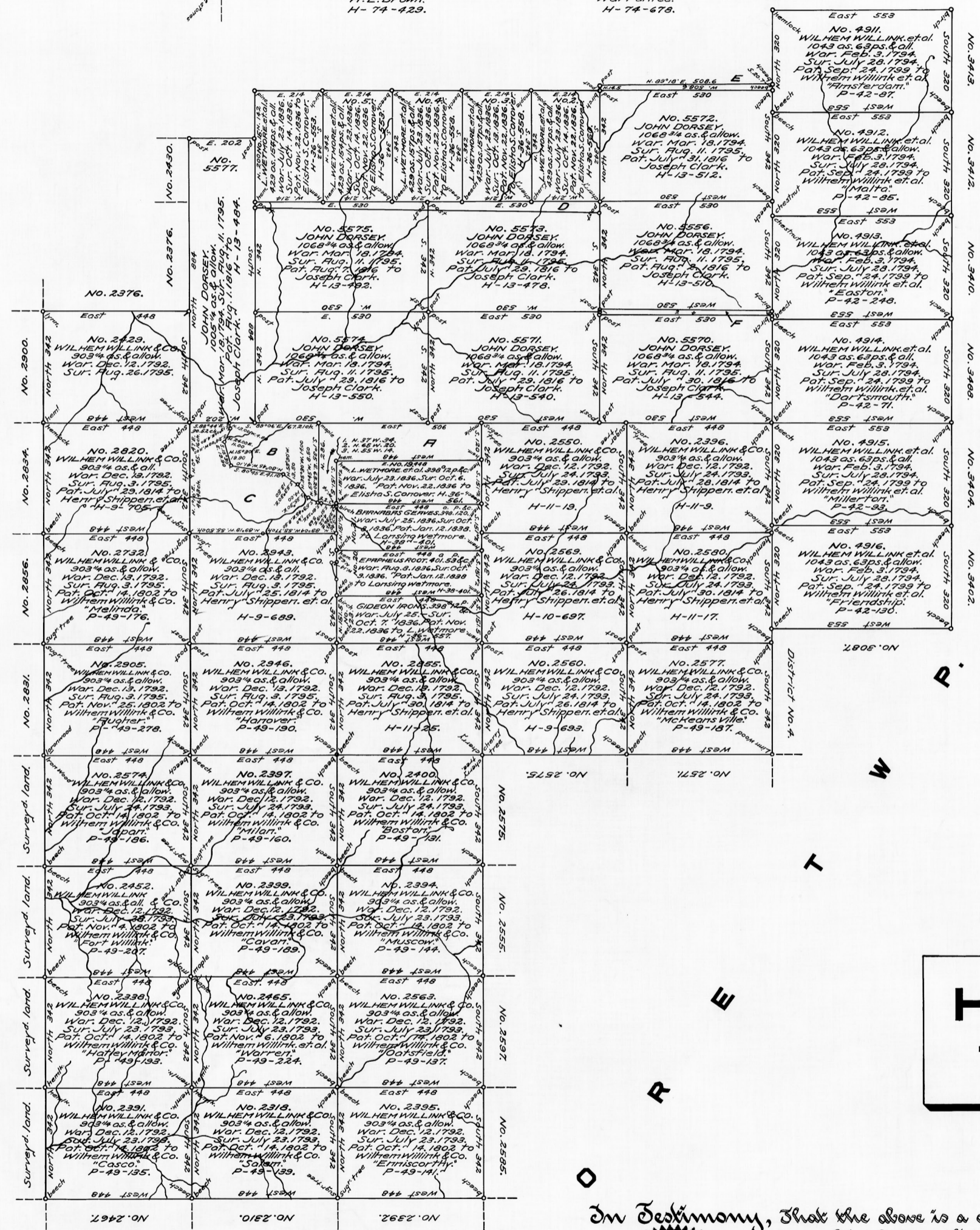
W A R R E N C O U N T Y

L A F A Y E T T E T W P .



D  
H. E. BROWN.  
165 ac. 104 ps. & all.  
War. Oct. 27, 1892.  
Sur. July 20, 1893.  
Pat. Sep. 18, 1893 to  
H. E. BROWN.  
H-74-423.

E  
D. F. WHEELLOCK.  
52 ac. 124 ps. & all.  
War. Nov. 23, 1887.  
Sur. Apr. 25, 1888.  
Pat. June 20, 1888 to  
Warrantee.  
H-74-678.



A  
LANSING WETMORE et al.  
403 ac. 85 ps. & all.  
War. July 23, 1834.  
Sur. Oct. 5, 1836.  
Pat. Nov. 22, 1836 to  
Elisha S. Conover.  
H-36-561.

B  
HARRISON MORRISON.  
283 ac. & all.  
War. Aug. 1, 1836.  
Sur. May 5 to June 30, 1836.  
Pat. Jan. 22, 1837 to  
Edward G. Anderson.  
(in trust &c.)  
H-79-2.

C  
JAMES HAMLIN.  
646.21 ac. & all.  
War. Aug. 1, 1836.  
Sur. May 5 to June 30, 1836.  
Pat. Jan. 22, 1837 to  
Edward G. Anderson.  
(in trust &c.)  
H-79-3.

F  
GEORGE H. LYON.  
58 ac. & all.  
War. Jan. 16, 1884.  
Sur. Mar. 5, 1884.  
Pat. May 1, 1884 to  
George H. Lyon.  
H-74-481.  
Courses & Distances.  
1. N. 0°15' W. 166 to post-stones.  
2. East 530 . . .  
3. S. 0°15' E. 186 . . .  
4. West 530 . . .

**HAMILTON TOWNSHIP**

1 Inch = 100 Rods.

William F. Moore,  
Director of Land Records.

In Testimony, That the above is a connected draft of all the tracts of land situated in the township of Hamilton and county of McLean, constructed from and compared with the original drafts remaining on file in the Department of Internal Affairs of Pennsylvania, and that the warrants, surveys and patents bear date respectively as above set forth, I have hereunto set my hand and caused the Seal of the said Department to be affixed, at Harrisburg, the third day of May, Anno Domini 1930.



Jos. F. Woodward  
Secretary of Internal Affairs.