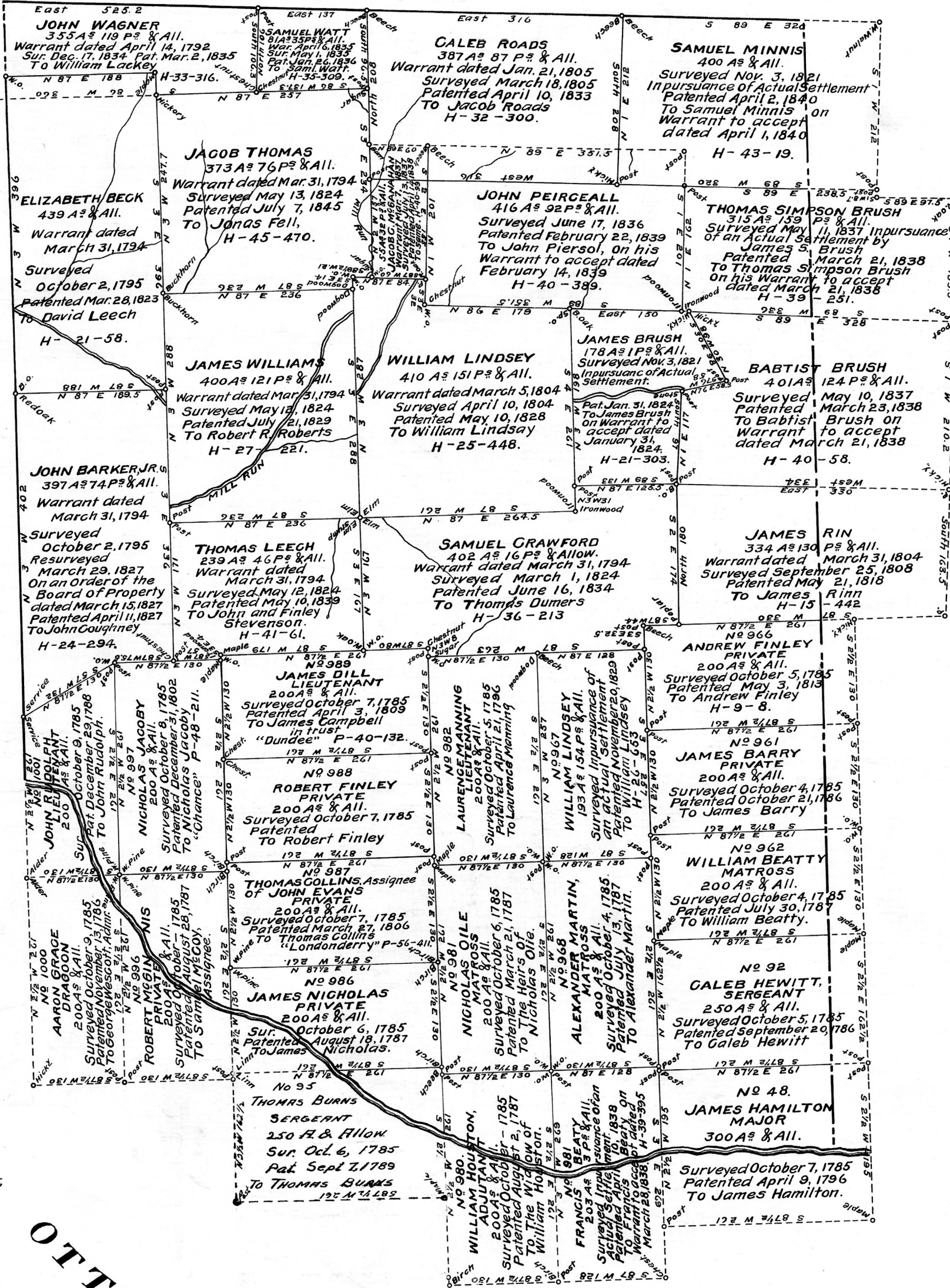


# CRAWFORD COUNTY

SUGAR GROVE TOWNSHIP

SANDY CREEK TOWNSHIP



**A CONNECTED DRAFT:** of the tracts of land situated in Salem Township, Mercer County. The Warrants, Surveys and Patents bearing dates respectively as above set forth, constructed from and compared with the original drafts remaining on file in the Department of Internal Affairs of Pennsylvania, under the direction of Warren J. Daniel, Director of the Land Office.

**IN TESTIMONY WHEREOF:** I have hereunto set my hand and caused the seal of the said Department at Harrisburg, this seventh day of March A.D. 1946

*William S. Livergood*  
Secretary of Internal Affairs

**SALEM TOWNSHIP**  
**MERCER COUNTY**

SCALE OF 100 RODS TO THE INCH.



2944