

P R E S I D E N T

Y

T

N

U

C

O

N

O

R

I

TOWNSHIP LINE

TOWNSHIP LINE

TOWNSHIP LINE

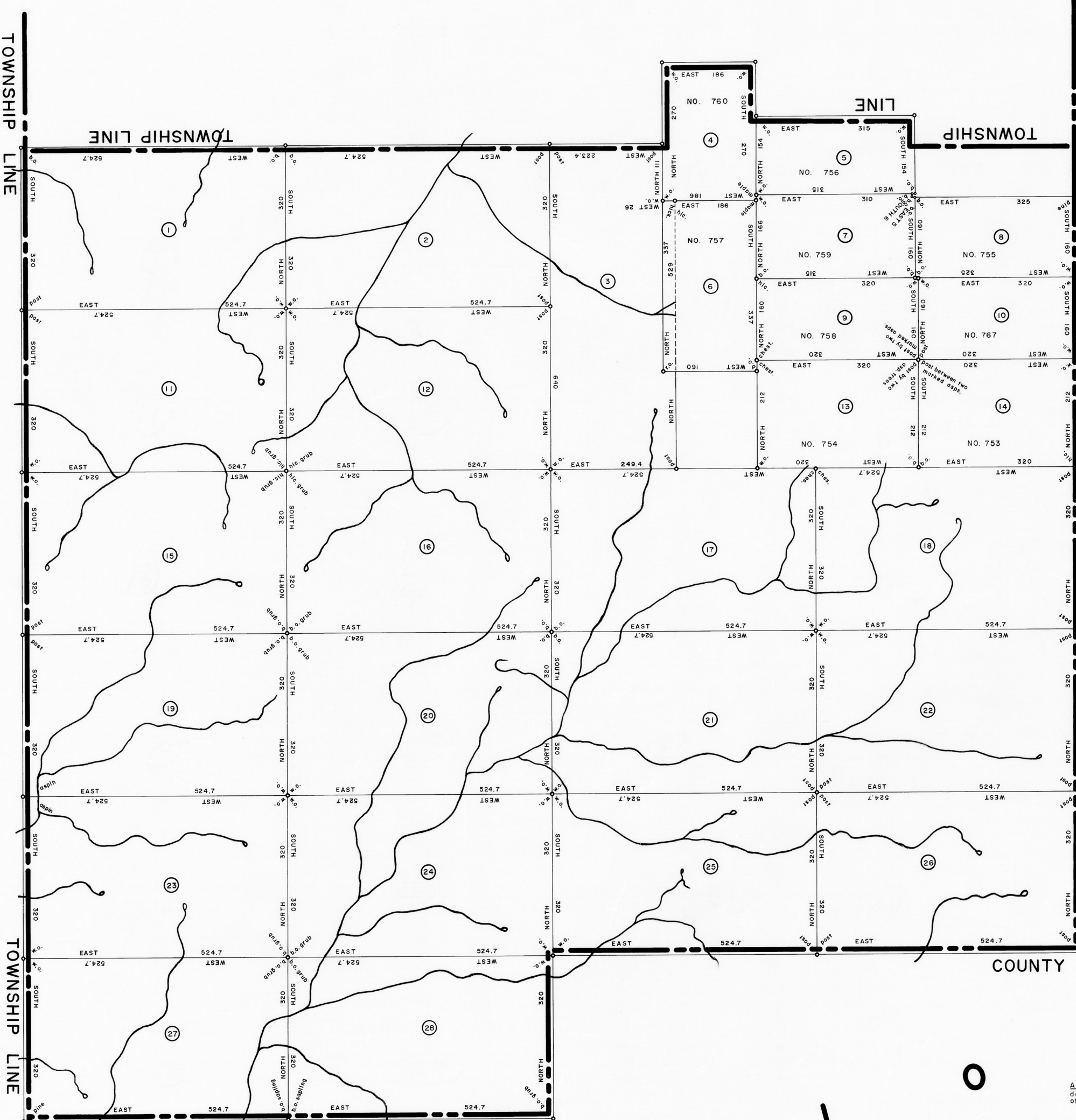
COUNTY LINE

COUNTY LINE

COUNTY LINE

C R A N B E R R Y

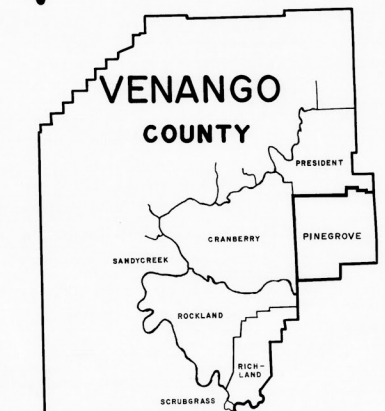
T O W N S H I P



SCALE: 1" = 100 RODS

A CONNECTED WARRANT TOWNSHIP MAP of Pine Grove Township in Venango County. The warrants, surveys and patents bearing, respectively, the dates as above set forth, are constructed from and have been compared with the original drafts on file in the Bureau of Land Records, Department of Community Affairs, Commonwealth of Pennsylvania, under the direction of Edward D. Price, Director.

IN TESTIMONY WHEREOF: I have hereunto set my hand and caused the seal of the said Department to be affixed at Harrisburg, Pennsylvania, this fifteenth day of February A.D., one thousand nine hundred and seventy-three.



Edward D. Price
Secretary of Community Affairs

- 1
D 11-96
WILHEM WILLINK ET AL.
990 ACRES B Allowance
WARRANT—DEC. 12, 1792
TRACT NO. 2882—L.P.—DIST. NO. 6
SURVEY—JULY 3, 1793
PATENT—AUG. 26, 1802
TO—HENRY SHIPPEN
H—35—368
- 2
A 57-27
WILHEM WILLINK ET AL.
990 ACRES B Allowance
WARRANT—DEC. 12, 1792
TRACT NO. 2881—L.P.—DIST. NO. 6
SURVEY—JULY 3, 1793
PATENT—AUG. 26, 1802
TO—H. J. CRAWFORD
AND T. B. GREGORY
H—78—339
- 3
A 29-216-217
WILHEM WILLINK ET AL.
990 ACRES B Allowance
WARRANT—DEC. 12, 1792
TRACT NO. 2879—L.P.—DIST. NO. 6
SURVEY—JULY 3, 1793
PATENT—AUG. 26, 1802
TO—WILHEM WILLINK ET AL.
P—49—114
"Edgewood"
- 4
NO SURVEY FOUND
DICKINSON COLLEGE
TRUSTEES
296 ACRES—18 Parcels B AII.
WARRANT—APRIL 28, 1786
TRACT NO. 750—L.P.—DIST. NO. 6
SURVEY—(NO SURVEY FOUND)
PATENT—JUNE 7, 1791
TO—DICKINSON COLLEGE
TRUSTEES
P—17—232
"Comaridge"
- 5
NO SURVEY FOUND
DICKINSON COLLEGE
TRUSTEES
286 ACRES—4 Parcels B AII.
WARRANT—APRIL 28, 1786
TRACT NO. 756—L.P.—DIST. NO. 6
SURVEY—(NO SURVEY FOUND)
PATENT—JUNE 7, 1791
TO—DICKINSON COLLEGE
TRUSTEES
P—17—242
"Thompson"
- 6
NO SURVEY FOUND
DICKINSON COLLEGE
TRUSTEES
37 ACRES—15 Parcels B AII.
WARRANT—APRIL 28, 1786
TRACT NO. 757—L.P.—DIST. NO. 6
SURVEY—(NO SURVEY FOUND)
PATENT—JUNE 7, 1791
TO—DICKINSON COLLEGE
TRUSTEES
P—17—243
"Harvey"
- 7
NO SURVEY FOUND
DICKINSON COLLEGE
TRUSTEES
308 ACRES—23 Parcels B AII.
WARRANT—APRIL 28, 1786
TRACT NO. 755—L.P.—DIST. NO. 6
SURVEY—(NO SURVEY FOUND)
PATENT—JUNE 7, 1791
TO—DICKINSON COLLEGE
TRUSTEES
P—17—233
"Strabane"
- 8
NO SURVEY FOUND
DICKINSON COLLEGE
TRUSTEES
308 ACRES—102 Parcels B AII.
WARRANT—APRIL 28, 1786
TRACT NO. 755—L.P.—DIST. NO. 6
SURVEY—(NO SURVEY FOUND)
PATENT—JUNE 7, 1791
TO—DICKINSON COLLEGE
TRUSTEES
P—17—248
"Rumney"
- 9
NO SURVEY FOUND
DICKINSON COLLEGE
TRUSTEES
301 ACRES—150 Parcels B AII.
WARRANT—APRIL 28, 1786
TRACT NO. 758—L.P.—DIST. NO. 6
SURVEY—(NO SURVEY FOUND)
PATENT—JUNE 7, 1791
TO—DICKINSON COLLEGE
TRUSTEES
P—17—236
"Hopewell"
- 10
NO SURVEY FOUND
DICKINSON COLLEGE
TRUSTEES
301 ACRES—150 Parcels B AII.
WARRANT—APRIL 28, 1786
TRACT NO. 787—L.P.—DIST. NO. 6
SURVEY—(NO SURVEY FOUND)
PATENT—JUNE 7, 1791
TO—DICKINSON COLLEGE
TRUSTEES
P—17—255
"Hopewell"
- 11
D 11-97
WILHEM WILLINK ET AL.
990 ACRES B Allowance
WARRANT—DEC. 12, 1792
TRACT NO. 2880—L.P.—DIST. NO. 6
SURVEY—JULY 3, 1793
PATENT—AUG. 26, 1802
TO—WILHEM WILLINK ET AL.
P—49—115
"Hopewell"
- 12
C 229-309
WILHEM WILLINK ET AL.
990 ACRES B Allowance
WARRANT—DEC. 12, 1792
TRACT NO. 2878—L.P.—DIST. NO. 6
SURVEY—JULY 3, 1793
PATENT—AUG. 26, 1802
TO—WILHEM WILLINK ET AL.
P—49—114
"Edgewood"
- 13
NO SURVEY FOUND
DICKINSON COLLEGE
TRUSTEES
400 ACRES B Allowance
WARRANT—APRIL 28, 1786
TRACT NO. 754—L.P.—DIST. NO. 6
SURVEY—(NO SURVEY FOUND)
PATENT—JUNE 7, 1791
TO—DICKINSON COLLEGE
TRUSTEES
P—17—227
"Pose"
- 14
NO SURVEY FOUND
DICKINSON COLLEGE
TRUSTEES
400 ACRES B Allowance
WARRANT—APRIL 28, 1786
TRACT NO. 753—L.P.—DIST. NO. 6
SURVEY—(NO SURVEY FOUND)
PATENT—JUNE 7, 1791
TO—DICKINSON COLLEGE
TRUSTEES
P—17—237
"Genevieve"
- 15
C 229-306
WILHEM WILLINK ET AL.
990 ACRES B Allowance
WARRANT—DEC. 12, 1792
TRACT NO. 2884—L.P.—DIST. NO. 6
SURVEY—JULY 3, 1793
PATENT—AUG. 26, 1802
TO—WILHEM WILLINK ET AL.
P—42—265
"Independence"
- 16
C 229-317
WILHEM WILLINK ET AL.
990 ACRES B Allowance
WARRANT—DEC. 12, 1792
TRACT NO. 2884—L.P.—DIST. NO. 6
SURVEY—JULY 3, 1793
PATENT—AUG. 26, 1802
TO—WILHEM WILLINK ET AL.
P—49—74
"Coranah"
- 17
D 40-79
WILHEM WILLINK ET AL.
990 ACRES B Allowance
WARRANT—DEC. 12, 1792
TRACT NO. 2883—L.P.—DIST. NO. 6
SURVEY—JULY 3, 1793
PATENT—AUG. 26, 1802
TO—WILHEM WILLINK ET AL.
P—49—108
"Pavia"
- 18
C 229-308
WILHEM WILLINK ET AL.
990 ACRES B Allowance
WARRANT—DEC. 12, 1792
TRACT NO. 2882—L.P.—DIST. NO. 6
SURVEY—JULY 3, 1793
PATENT—AUG. 26, 1802
TO—WILHEM WILLINK ET AL.
P—49—67
"Gillingham"
- 19
D 8-101
WILHEM WILLINK ET AL.
990 ACRES B Allowance
WARRANT—DEC. 12, 1792
TRACT NO. 2889—L.P.—DIST. NO. 6
SURVEY—JULY 3, 1793
PATENT—AUG. 26, 1802
TO—WILHEM WILLINK ET AL.
P—49—119
"Montcalm"
- 20
D 8-102
WILHEM WILLINK ET AL.
990 ACRES B Allowance
WARRANT—DEC. 12, 1792
TRACT NO. 2886—L.P.—DIST. NO. 6
SURVEY—JULY 3, 1793
PATENT—AUG. 26, 1802
TO—WILHEM WILLINK ET AL.
P—49—124
"Abercromby"
- 21
D 8-89
WILHEM WILLINK ET AL.
990 ACRES B Allowance
WARRANT—DEC. 12, 1792
TRACT NO. 2884—L.P.—DIST. NO. 6
SURVEY—JULY 3, 1793
PATENT—AUG. 26, 1802
TO—WILHEM WILLINK ET AL.
P—42—279
"Abingdon"
- 22
D 8-111
WILHEM WILLINK ET AL.
990 ACRES B Allowance
WARRANT—DEC. 12, 1792
TRACT NO. 2844—L.P.—DIST. NO. 6
SURVEY—JULY 3, 1793
PATENT—AUG. 26, 1802
TO—WILHEM WILLINK ET AL.
P—42—267
"Part Republic"
- 23
D 8-105
WILHEM WILLINK ET AL.
990 ACRES B Allowance
WARRANT—DEC. 12, 1792
TRACT NO. 2881—L.P.—DIST. NO. 6
SURVEY—JULY 3, 1793
PATENT—AUG. 26, 1802
TO—WILHEM WILLINK ET AL.
P—42—265
"Independence"
- 24
D 8-112
WILHEM WILLINK ET AL.
990 ACRES B Allowance
WARRANT—DEC. 12, 1792
TRACT NO. 2840—L.P.—DIST. NO. 6
SURVEY—JULY 3, 1793
PATENT—AUG. 26, 1802
TO—WILHEM WILLINK ET AL.
P—42—281
"Freedom"
- 25
D 8-114
WILHEM WILLINK ET AL.
990 ACRES B Allowance
WARRANT—DEC. 12, 1792
TRACT NO. 2889—L.P.—DIST. NO. 6
SURVEY—JULY 3, 1793
PATENT—AUG. 26, 1802
TO—WILHEM WILLINK ET AL.
P—42—264
"Livery"
- 26
D 8-108
WILHEM WILLINK ET AL.
990 ACRES B Allowance
WARRANT—DEC. 12, 1792
TRACT NO. 2881—L.P.—DIST. NO. 6
SURVEY—JULY 3, 1793
PATENT—AUG. 26, 1802
TO—WILHEM WILLINK ET AL.
P—42—273
"Africa"
- 27
D 8-108
WILHEM WILLINK ET AL.
990 ACRES B Allowance
WARRANT—DEC. 12, 1792
TRACT NO. 2885—L.P.—DIST. NO. 6
SURVEY—JULY 3, 1793
PATENT—AUG. 26, 1802
TO—WILHEM WILLINK ET AL.
P—42—272
"Hollade"