

SMITH TWP.

MOUNT PLEASANT TWP.

JEFFERSON TWP.

INDEPENDENCE TWP.

HOPEWELL TWP.

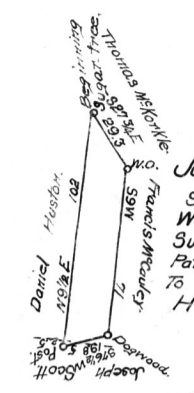
CROSS CREEK TOWNSHIP

JOHN H. CAMPBELL, CHIEF DRAFTSMAN.

In Testimony, that the above is a corrected draft of all the tracts of land situated in the township of Cross Creek and county of Washington, constructed from and compared with the original drafts remaining on file in the Department of Internal Affairs of Pennsylvania, I have hereunto set my hand and caused the Seal of the said Department to be hereto affixed, at Harrisburg, the tenth day of August, A. D. 1921.

Geo. F. Woodward, Secretary of Internal Affairs.

9



(2.) ALEXANDER WALKER. 4 1/2 Acs & All. War Oct 19 1833. Sur Oct 18 1833. Pat June 27 1873. To Thomas P Varcoe. H-71-760.

(3.) JOSEPH EKIN. 9 1/2 Acs & All. War Dec 31 1815. Sur Mar 18 1815. Pat Mar 7 1816. To Warrantee. H-73-119.

1. JOHN GRAHAM. 29 Acs & All. War Dec 21 1799. Sur Oct 20 1800. Pat Dec 21 1801. To Warrantee. "Palana" P 47-58.

JOHN WAGONER. 194 Acs 54 Ps Strict Measure. Sur Jan 14 1786 on a Virga Certificate. Pat Nov 18 1786 on Wt to accept dated Nov 7 1786 to Warrantee. P 3-4-43.

EDWARD BROWN. 276 Acs & All. Sur. --- in pursuance of a Virga Wart. Pat May 27 1795 on Wt to accept dated May 20 1795 to Edward Brown. "Brownfield" P 25-285.

JOSEPH VANCE. 385 Acs & All. War Mar 4 1785. Sur Oct 19 1786. Pat Mar 20 1789. To Warrantee. P 14-539.

ROBERT RUTHERFORD. 2500 Acres. Surveyed Apr 7 1775. Patented Dec 23 1778. by Commonwealth of Virginia.

(4.) JAMES MOOR. 27 1/2 Acs 100 Ps & All. War Feb 18 1805. Sur Mar 8 1805. Pat Mar 25 1805. To James Moore. P 55-342.

Wm SMITH. 305 Acs & All. War Feb 23 1786. Sur Aug 18 1786. Pat Mar 10 1788. To Warrantee. P 12-189.

ALEXANDER WELLS & NATHAN CROMWELL. 500 Acs & All. Virga Pat. dated June 6 1780.

HENRY GRAHAM. 366 Acs 150 Ps Strict Measure. Sur Dec 2 1785 on Virga Certificate. Pat Mar 21 1787. "in Wt to accept dated Mar 17 1787 to Henry Graham." P 10-55.

JOSEPH PATTERSON. 387 1/2 Acs & All. War June 28 1785. Sur Dec 3 1786. Pat Aug 21 1788. To Warrantee. P 12-194.

THOMAS MARSHALL. 405 1/2 Acs & All. War Mar 31 1786. Sur Oct 24 1787. Pat Dec 15 1788. To Jacob Buxton. P 14-452.

ALEXR WILLS & NATHN CROMWELL. 1500 Acs. Virga Pat June 3 1780.

JOHN TENNEL. 400 Acs 44 Ps & All. Sur. Feb. 10, 1786 - in Consequence of a Virga Certificate. Pat Mar 26 1789 on Wt to accept dated Mar 23 1789 to John Tennel. P 14-538.

JOSEPH REILEY. 344 Acs 105 Ps Strict Measure. Sur Dec 24 1785 on Virga Certificate. Pat Sep 4 1790 on Wt to accept dated Sep 2 1790 to Jos. Reily. P 15-325.

JOHN MARQUIS. 42 1/2 Acs & All. War Feb 23 1786. Sur Aug 21 1786. Pat Mar 10 1788. To Warrantee. P 12-194.

JOSEPH PATTERSON. 387 1/2 Acs & All. War June 28 1785. Sur Dec 3 1786. Pat Aug 21 1788. To Warrantee. P 12-194.

THOMAS MARSHALL. 405 1/2 Acs & All. War Mar 31 1786. Sur Oct 24 1787. Pat Dec 15 1788. To Jacob Buxton. P 14-452.

ALEXR WILLS & NATHN CROMWELL. 1500 Acs. Virga Pat June 3 1780.

JOHN TENNEL. 400 Acs 44 Ps & All. Sur. Feb. 10, 1786 - in Consequence of a Virga Certificate. Pat Mar 26 1789 on Wt to accept dated Mar 23 1789 to John Tennel. P 14-538.

JOHN TENNEL. 400 Acs 44 Ps & All. Sur. Feb. 10, 1786 - in Consequence of a Virga Certificate. Pat Mar 26 1789 on Wt to accept dated Mar 23 1789 to John Tennel. P 14-538.

WILLIAM CAMPBELL. 352 Acs 108 Ps & All. War Oct 16 1787. Sur Dec 7 1787. Pat Sep 24 1788. To Henry. P 14-264.

JAMES STEVENSON. 439 Acres Strict Measure. Sur Apr 17 1828 in pursuance of Order of B. Resur. Mar 10 1780 on Virga Certificate. Pat Mar 25 1788. To Warrantee. P 13-56.

THOMAS RUTHERFORD. 1000 Acres. Surveyed April 3 1775. Patented December 23 1778 by Commonwealth of Virginia.

JAMES MARSHALL. 358 1/2 Acres & All. War Mar 31 1786. Sur May 22 1787. Pat Apr 18 1788. To James Marshall. P 12-278.

JOHN DONAHY. 423 Acres & All. War Oct 13 1784. Sur Feb 10 1785. Pat Dec 3 1786. To Warrantee. P 8-132.

JOHN DONAHY. 423 Acres & All. War Oct 13 1784. Sur Feb 10 1785. Pat Dec 3 1786. To Warrantee. P 8-132.

JOHN DONAHY. 423 Acres & All. War Oct 13 1784. Sur Feb 10 1785. Pat Dec 3 1786. To Warrantee. P 8-132.

DAVID VANCE. 392 Acs 43 Ps Strict Measure. Sur Dec 10 1786 in Consequence of a Virga Certificate. Pat Mar 17 1788 on Wt to accept dated July 24 1801 to David Vance. "on Wt to accept dated Mar 1 1788." P 13-40.

JAMES MARSHALL. 358 1/2 Acres & All. War Mar 31 1786. Sur May 22 1787. Pat Apr 18 1788. To James Marshall. P 12-278.

JOHN DONAHY. 423 Acres & All. War Oct 13 1784. Sur Feb 10 1785. Pat Dec 3 1786. To Warrantee. P 8-132.

JOHN DONAHY. 423 Acres & All. War Oct 13 1784. Sur Feb 10 1785. Pat Dec 3 1786. To Warrantee. P 8-132.

JOHN DONAHY. 423 Acres & All. War Oct 13 1784. Sur Feb 10 1785. Pat Dec 3 1786. To Warrantee. P 8-132.

JOHN DONAHY. 423 Acres & All. War Oct 13 1784. Sur Feb 10 1785. Pat Dec 3 1786. To Warrantee. P 8-132.

JOHN DONAHY. 423 Acres & All. War Oct 13 1784. Sur Feb 10 1785. Pat Dec 3 1786. To Warrantee. P 8-132.

JAMES MARSHALL. 358 1/2 Acres & All. War Mar 31 1786. Sur May 22 1787. Pat Apr 18 1788. To James Marshall. P 12-278.

JOHN DONAHY. 423 Acres & All. War Oct 13 1784. Sur Feb 10 1785. Pat Dec 3 1786. To Warrantee. P 8-132.

JOHN DONAHY. 423 Acres & All. War Oct 13 1784. Sur Feb 10 1785. Pat Dec 3 1786. To Warrantee. P 8-132.

JOHN DONAHY. 423 Acres & All. War Oct 13 1784. Sur Feb 10 1785. Pat Dec 3 1786. To Warrantee. P 8-132.

JOHN DONAHY. 423 Acres & All. War Oct 13 1784. Sur Feb 10 1785. Pat Dec 3 1786. To Warrantee. P 8-132.

JOHN DONAHY. 423 Acres & All. War Oct 13 1784. Sur Feb 10 1785. Pat Dec 3 1786. To Warrantee. P 8-132.

JOHN DONAHY. 423 Acres & All. War Oct 13 1784. Sur Feb 10 1785. Pat Dec 3 1786. To Warrantee. P 8-132.

JAMES MARSHALL. 358 1/2 Acres & All. War Mar 31 1786. Sur May 22 1787. Pat Apr 18 1788. To James Marshall. P 12-278.

JOHN DONAHY. 423 Acres & All. War Oct 13 1784. Sur Feb 10 1785. Pat Dec 3 1786. To Warrantee. P 8-132.

JOHN DONAHY. 423 Acres & All. War Oct 13 1784. Sur Feb 10 1785. Pat Dec 3 1786. To Warrantee. P 8-132.

JOHN DONAHY. 423 Acres & All. War Oct 13 1784. Sur Feb 10 1785. Pat Dec 3 1786. To Warrantee. P 8-132.

JOHN DONAHY. 423 Acres & All. War Oct 13 1784. Sur Feb 10 1785. Pat Dec 3 1786. To Warrantee. P 8-132.

JOHN DONAHY. 423 Acres & All. War Oct 13 1784. Sur Feb 10 1785. Pat Dec 3 1786. To Warrantee. P 8-132.

JOHN DONAHY. 423 Acres & All. War Oct 13 1784. Sur Feb 10 1785. Pat Dec 3 1786. To Warrantee. P 8-132.

JAMES MARSHALL. 358 1/2 Acres & All. War Mar 31 1786. Sur May 22 1787. Pat Apr 18 1788. To James Marshall. P 12-278.

JOHN DONAHY. 423 Acres & All. War Oct 13 1784. Sur Feb 10 1785. Pat Dec 3 1786. To Warrantee. P 8-132.

JOHN DONAHY. 423 Acres & All. War Oct 13 1784. Sur Feb 10 1785. Pat Dec 3 1786. To Warrantee. P 8-132.

JOHN DONAHY. 423 Acres & All. War Oct 13 1784. Sur Feb 10 1785. Pat Dec 3 1786. To Warrantee. P 8-132.

JOHN DONAHY. 423 Acres & All. War Oct 13 1784. Sur Feb 10 1785. Pat Dec 3 1786. To Warrantee. P 8-132.

JOHN DONAHY. 423 Acres & All. War Oct 13 1784. Sur Feb 10 1785. Pat Dec 3 1786. To Warrantee. P 8-132.

JOHN DONAHY. 423 Acres & All. War Oct 13 1784. Sur Feb 10 1785. Pat Dec 3 1786. To Warrantee. P 8-132.