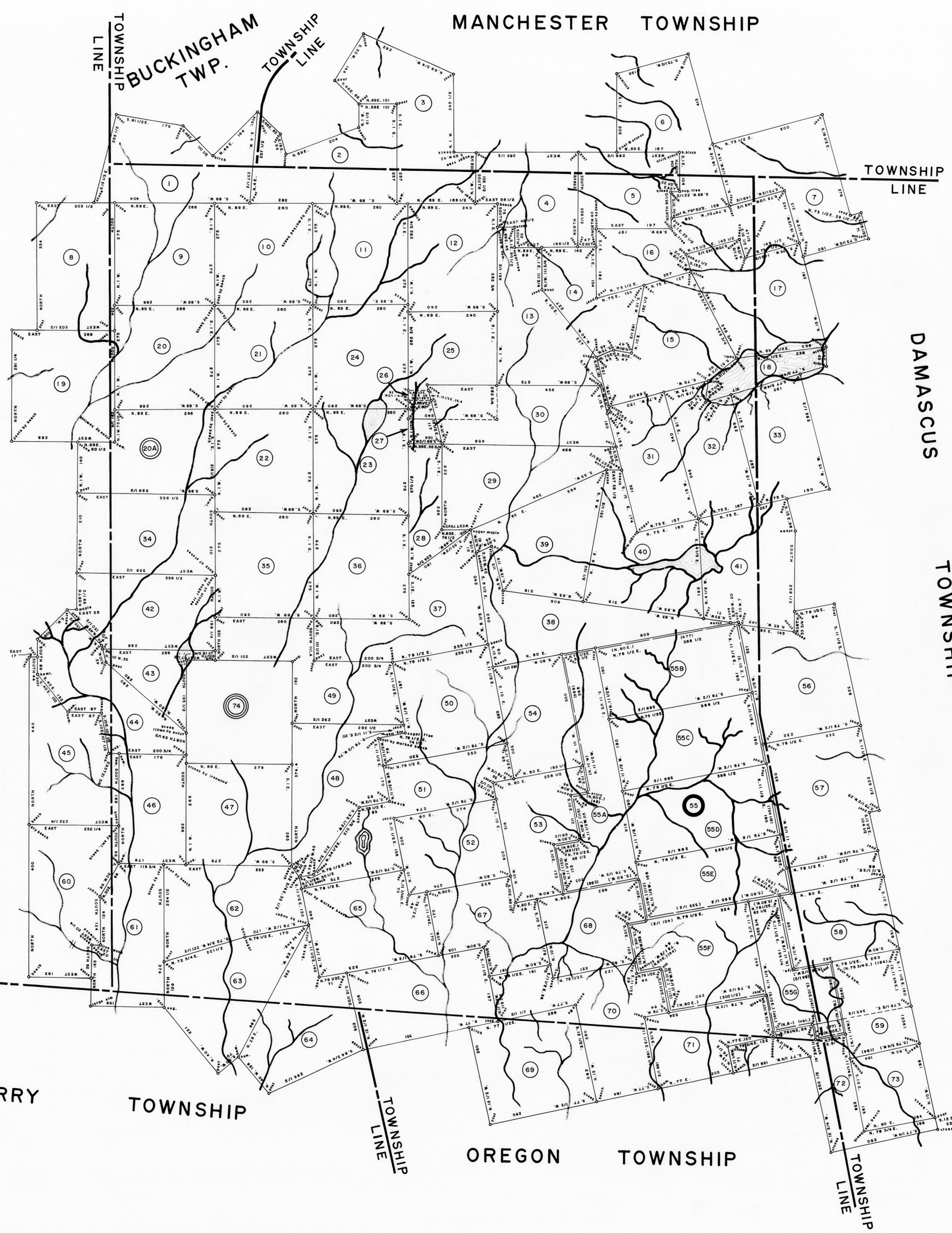



MANCHESTER TOWNSHIP



1 DANIEL BECKLEY 41 ACRES-10 Pct. & All. WARRANT—DEC. 28, 1792 SURVEY—JULY 10, 1793 TO—GEORGE CADWALLADER, EXT. H—GEORGE CADWALLADER, EXT. P—GEORGE CADWALLADER, EXT.	13 SAMUEL FLAARANT 41 ACRES-10 Pct. & All. WARRANT—MARCH 9, 1793 SURVEY—JULY 10, 1793 PATENT—SEPT. 30, 1851 TO—NATHAN KITE ET AL. H—NATHAN KITE ET AL. P—NATHAN KITE ET AL.	25 JOHN PARKER 40 ACRES-10 Pct. & All. WARRANT—DEC. 28, 1792 SURVEY—JULY 10, 1793 PATENT—JULY 11, 1808 TO—THOMAS WOOD H—THOMAS WOOD P—THOMAS WOOD	37 GEORGE PEIFFER 40 ACRES-10 Pct. & All. WARRANT—DEC. 28, 1792 SURVEY—JULY 10, 1793 PATENT—JULY 11, 1808 TO—THOMAS WOOD H—THOMAS WOOD P—THOMAS WOOD	49 JACOB CARVER 40 ACRES-10 Pct. & All. WARRANT—DEC. 28, 1792 SURVEY—JULY 10, 1793 PATENT—JULY 11, 1808 TO—THOMAS WOOD H—THOMAS WOOD P—THOMAS WOOD	61 THOMAS BAIRD 40 ACRES-10 Pct. & All. WARRANT—JULY 24, 1793 SURVEY—JUNE 28, 1794 UNPATENTED AT THIS DATE
2 HENRY TOLAND 40 ACRES-10 Pct. & All. WARRANT—DEC. 28, 1792 SURVEY—JULY 10, 1793 PATENT—AUG. 21, 1801 TO—ROBERT MORRIS, EXT. H—ROBERT MORRIS, EXT. P—ROBERT MORRIS, EXT.	14 JOHN THOMPSON 40 ACRES-10 Pct. & All. WARRANT—MARCH 9, 1793 SURVEY—AUG. 10, 1793 PATENT—AUG. 21, 1801 TO—NATHAN KITE ET AL. H—NATHAN KITE ET AL. P—NATHAN KITE ET AL.	26 CHARLES P. WALLER 40 ACRES-10 Pct. & All. WARRANT—JAN. 23, 1793 SURVEY—AUG. 21, 1801 PATENT—FEB. 4, 1800 TO—CHAR. P. WALLER H—CHAR. P. WALLER P—CHAR. P. WALLER	38 GEORGE MCGO 40 ACRES-10 Pct. & All. WARRANT—AUG. 21, 1801 SURVEY—AUG. 21, 1801 PATENT—AUG. 21, 1801 TO—THOMAS WOOD H—THOMAS WOOD P—THOMAS WOOD	50 WILLIAM DUNCAN 40 ACRES-10 Pct. & All. WARRANT—SEPT. 7, 1793 SURVEY—NOV. 15, 1794 PATENT—APRIL 17, 1822 TO—THOMAS ASTLEY H—THOMAS ASTLEY P—THOMAS ASTLEY	62 WILLIAM BAIRD 40 ACRES-10 Pct. & All. WARRANT—JULY 24, 1793 SURVEY—JUNE 28, 1794 UNPATENTED AT THIS DATE
3 JOHN RILL 40 ACRES-10 Pct. & All. WARRANT—AUG. 9, 1793 SURVEY—SEPT. 3, 1793 PATENT—AUG. 21, 1801 TO—JOHN RILL H—JOHN RILL P—JOHN RILL	15 HARRIET BOSTON 40 ACRES-10 Pct. & All. WARRANT—AUG. 10, 1793 SURVEY—AUG. 10, 1793 PATENT—NOV. 15, 1794 TO—HENRY PHILIPS ET AL. H—HENRY PHILIPS ET AL. P—HENRY PHILIPS ET AL.	27 PHINEAS G. GOODRICH 40 ACRES-10 Pct. & All. WARRANT—MAY 5, 1884 SURVEY—AUG. 10, 1884 PATENT—DEC. 30, 1884 H—PHINEAS G. GOODRICH P—PHINEAS G. GOODRICH	39 JOSEPH LOWNES 40 ACRES-10 Pct. & All. WARRANT—AUG. 10, 1793 SURVEY—AUG. 10, 1793 PATENT—AUG. 14, 1812 TO—THOMAS SHIELDS H—THOMAS SHIELDS P—THOMAS SHIELDS	51 WILLIAM DUNCAN 40 ACRES-10 Pct. & All. WARRANT—SEPT. 7, 1793 SURVEY—NOV. 15, 1794 PATENT—APRIL 17, 1822 TO—THOMAS ASTLEY H—THOMAS ASTLEY P—THOMAS ASTLEY	63 SAMUEL NICHOLSON 40 ACRES-10 Pct. & All. WARRANT—SEPT. 7, 1793 SURVEY—NOV. 15, 1794 PATENT—APRIL 17, 1822 TO—Wm. CRAWFORD ET AL. H—Wm. CRAWFORD ET AL. P—Wm. CRAWFORD ET AL.
4 ALEXANDER BARTAM 40 ACRES-10 Pct. & All. WARRANT—JAN. 31, 1794 SURVEY—OCT. 31, 1794 PATENT—FEB. 14, 1794 TO—ROBERT MORRIS H—ROBERT MORRIS P—ROBERT MORRIS	16 WILLIAM MOORE 40 ACRES-10 Pct. & All. WARRANT—JAN. 31, 1794 SURVEY—OCT. 31, 1794 PATENT—FEB. 14, 1794 TO—WILLIAM MOORE H—WILLIAM MOORE P—WILLIAM MOORE	28 JOHN PURDON 40 ACRES-10 Pct. & All. WARRANT—JAN. 31, 1794 SURVEY—OCT. 31, 1794 PATENT—FEB. 14, 1794 TO—THOMAS SHIELDS H—THOMAS SHIELDS P—THOMAS SHIELDS	40 WILLIAM DARAH 40 ACRES-10 Pct. & All. WARRANT—JULY 13, 1794 SURVEY—AUG. 10, 1793 PATENT—AUG. 14, 1812 TO—THOMAS SHIELDS H—THOMAS SHIELDS P—THOMAS SHIELDS	52 WARWICK MILLER 40 ACRES-10 Pct. & All. WARRANT—NOV. 15, 1794 SURVEY—NOV. 15, 1794 PATENT—NOV. 15, 1794 TO—ROBERT MORRIS H—ROBERT MORRIS P—ROBERT MORRIS	64 PETER WERNER 40 ACRES-10 Pct. & All. WARRANT—SEPT. 7, 1793 SURVEY—NOV. 15, 1794 PATENT—MARCH 25, 1798 TO—JAMES HUNTER H—JAMES HUNTER P—JAMES HUNTER
5 BENJAMIN DAVIES 40 ACRES-10 Pct. & All. WARRANT—OCT. 31, 1794 SURVEY—OCT. 31, 1794 PATENT—FEB. 14, 1794 TO—ROBERT MORRIS H—ROBERT MORRIS P—ROBERT MORRIS	17 FRANCES BUDDEN 40 ACRES-10 Pct. & All. WARRANT—SEPT. 7, 1793 SURVEY—OCT. 31, 1794 PATENT—NOV. 15, 1794 TO—HENRY PHILIPS ET AL. H—HENRY PHILIPS ET AL. P—HENRY PHILIPS ET AL.	29 HUGH GOOLY 40 ACRES-10 Pct. & All. WARRANT—AUG. 10, 1793 SURVEY—AUG. 10, 1793 PATENT—AUG. 14, 1812 TO—THOMAS SHIELDS H—THOMAS SHIELDS P—THOMAS SHIELDS	41 JOSEPH GEE 40 ACRES-10 Pct. & All. WARRANT—NOV. 15, 1794 SURVEY—NOV. 15, 1794 PATENT—NOV. 15, 1794 TO—THOMAS SHIELDS H—THOMAS SHIELDS P—THOMAS SHIELDS	53 WILLIAM GRAY 40 ACRES-10 Pct. & All. WARRANT—OCT. 31, 1794 SURVEY—NOV. 15, 1794 PATENT—NOV. 15, 1794 TO—ROBERT MORRIS H—ROBERT MORRIS P—ROBERT MORRIS	65 ARCHIBALD GARDNER 40 ACRES-10 Pct. & All. WARRANT—OCT. 31, 1794 SURVEY—NOV. 15, 1794 PATENT—MARCH 25, 1798 TO—JAMES HUNTER H—JAMES HUNTER P—JAMES HUNTER
6 HENRY MESSEMER 40 ACRES-10 Pct. & All. WARRANT—JAN. 3, 1793 SURVEY—JULY 10, 1793 PATENT—JAN. 26, 1794 TO—WILLIAM LANE H—WILLIAM LANE P—WILLIAM LANE	18 ELIJAH WESTON 40 ACRES-10 Pct. & All. WARRANT—MAY 22, 1829 SURVEY—MARCH 18, 1824 PATENT—JULY 23, 1826 TO—THOMAS SHIELDS H—THOMAS SHIELDS P—THOMAS SHIELDS	30 TIMOTHY CAVENAUGH 40 ACRES-10 Pct. & All. WARRANT—JULY 13, 1794 SURVEY—AUG. 10, 1793 PATENT—AUG. 14, 1812 TO—THOMAS SHIELDS H—THOMAS SHIELDS P—THOMAS SHIELDS	42 WILLIAM ELLIOTT 40 ACRES-10 Pct. & All. WARRANT—AUG. 21, 1794 SURVEY—AUG. 21, 1794 PATENT—AUG. 21, 1794 TO—WILLIAM ARMSTRONG H—WILLIAM ARMSTRONG P—WILLIAM ARMSTRONG	54 JAMES ASTON 40 ACRES-10 Pct. & All. WARRANT—MAY 31, 1794 SURVEY—MAY 31, 1794 PATENT—MAY 31, 1794 TO—HENRY CRANDON H—HENRY CRANDON P—HENRY CRANDON	66 WILLIAM BAIRD 40 ACRES-10 Pct. & All. WARRANT—JULY 24, 1793 SURVEY—JUNE 28, 1794 UNPATENTED AT THIS DATE
7 SAMUEL HOCKLEY 40 ACRES-10 Pct. & All. WARRANT—MARCH 9, 1793 SURVEY—AUG. 10, 1793 PATENT—JAN. 31, 1794 TO—WILLIAM LANE H—WILLIAM LANE P—WILLIAM LANE	19 JOHN WESTON 40 ACRES-10 Pct. & All. WARRANT—MAY 22, 1829 SURVEY—MARCH 18, 1824 PATENT—JULY 23, 1826 TO—THOMAS SHIELDS H—THOMAS SHIELDS P—THOMAS SHIELDS	31 ROBERT LETTIS HOOPER, JR. 40 ACRES-10 Pct. & All. WARRANT—NOV. 15, 1794 SURVEY—NOV. 15, 1794 PATENT—NOV. 15, 1794 TO—JAMES WILSON H—JAMES WILSON P—JAMES WILSON	43 WILLIAM ELLIOTT 40 ACRES-10 Pct. & All. WARRANT—AUG. 21, 1794 SURVEY—AUG. 21, 1794 PATENT—AUG. 21, 1794 TO—WILLIAM ARMSTRONG H—WILLIAM ARMSTRONG P—WILLIAM ARMSTRONG	55 HON. PROPRIETARIES 40 ACRES-10 Pct. & All. WARRANT—MAY 31, 1794 SURVEY—MAY 31, 1794 PATENT—MAY 31, 1794 TO—SAMUEL WERATTO H—SAMUEL WERATTO P—SAMUEL WERATTO	67 HENRY TOLAND 40 ACRES-10 Pct. & All. WARRANT—MARCH 10, 1798 SURVEY—MARCH 10, 1798 PATENT—MARCH 10, 1798 TO—CHARLES BURGESS H—CHARLES BURGESS P—CHARLES BURGESS
8 SAMUEL HOCKLEY 40 ACRES-10 Pct. & All. WARRANT—MARCH 9, 1793 SURVEY—AUG. 10, 1793 PATENT—JAN. 31, 1794 TO—WILLIAM LANE H—WILLIAM LANE P—WILLIAM LANE	20 JOHN HEATON 40 ACRES-10 Pct. & All. WARRANT—OCT. 31, 1794 SURVEY—OCT. 31, 1794 PATENT—FEB. 14, 1794 TO—WILLIAM LANE H—WILLIAM LANE P—WILLIAM LANE	32 DAVIS BASSETT 40 ACRES-10 Pct. & All. WARRANT—OCT. 10, 1774 SURVEY—NOV. 15, 1794 PATENT—NOV. 15, 1794 TO—JAMES WILSON H—JAMES WILSON P—JAMES WILSON	44 JOHN ELMELIE 40 ACRES-10 Pct. & All. WARRANT—OCT. 10, 1774 SURVEY—NOV. 15, 1794 PATENT—NOV. 15, 1794 TO—THOMAS APFLECK H—THOMAS APFLECK P—THOMAS APFLECK	56 JOHN NICHOLSON 40 ACRES-10 Pct. & All. WARRANT—SEPT. 7, 1793 SURVEY—NOV. 15, 1794 PATENT—APRIL 17, 1822 TO—WILLIAM CRAWFORD ET AL. H—WILLIAM CRAWFORD ET AL. P—WILLIAM CRAWFORD ET AL.	68 WILLIAM PARKER 40 ACRES-10 Pct. & All. WARRANT—JULY 24, 1793 SURVEY—JUNE 28, 1794 UNPATENTED AT THIS DATE
9 DAVID BECKLEY 40 ACRES-10 Pct. & All. WARRANT—DEC. 28, 1792 SURVEY—JULY 10, 1793 PATENT—AUG. 21, 1801 TO—GEORGE CADWALLADER, EXT. H—GEORGE CADWALLADER, EXT. P—GEORGE CADWALLADER, EXT.	21 JOHN MCKISSICK 40 ACRES-10 Pct. & All. WARRANT—DEC. 28, 1792 SURVEY—JULY 10, 1793 PATENT—AUG. 21, 1801 TO—THOMAS WOOD H—THOMAS WOOD P—THOMAS WOOD	33 THOMAS PALMER 40 ACRES-10 Pct. & All. WARRANT—OCT. 9, 1774 SURVEY—NOV. 15, 1794 PATENT—JAN. 10, 1782 TO—JAMES WILSON H—JAMES WILSON P—JAMES WILSON	45 HENRY TOLAND 40 ACRES-10 Pct. & All. WARRANT—JAN. 13, 1794 SURVEY—JAN. 13, 1794 PATENT—JAN. 13, 1794 TO—WILLIAM ARMSTRONG H—WILLIAM ARMSTRONG P—WILLIAM ARMSTRONG	57 JOHN MORFON 40 ACRES-10 Pct. & All. WARRANT—OCT. 10, 1774 SURVEY—OCT. 10, 1774 PATENT—OCT. 10, 1774 TO—THOMAS APFLECK H—THOMAS APFLECK P—THOMAS APFLECK	69 WILLIAM PARKER 40 ACRES-10 Pct. & All. WARRANT—JULY 24, 1793 SURVEY—JUNE 28, 1794 UNPATENTED AT THIS DATE
10 ELIZABETH BECK 40 ACRES-10 Pct. & All. WARRANT—DEC. 28, 1792 SURVEY—JULY 10, 1793 PATENT—AUG. 21, 1801 TO—GEORGE CADWALLADER, EXT. H—GEORGE CADWALLADER, EXT. P—GEORGE CADWALLADER, EXT.	22 WILLIAM JAMES 40 ACRES-10 Pct. & All. WARRANT—JULY 9, 1793 SURVEY—JULY 9, 1793 PATENT—JULY 9, 1793 TO—WILLIAM JAMES H—WILLIAM JAMES P—WILLIAM JAMES	34 WILLIAM PHILLIPS 40 ACRES-10 Pct. & All. WARRANT—JAN. 13, 1794 SURVEY—JAN. 13, 1794 PATENT—JAN. 13, 1794 TO—WILLIAM ARMSTRONG H—WILLIAM ARMSTRONG P—WILLIAM ARMSTRONG	46 HENRY TOLAND 40 ACRES-10 Pct. & All. WARRANT—JAN. 13, 1794 SURVEY—JAN. 13, 1794 PATENT—JAN. 13, 1794 TO—WILLIAM ARMSTRONG H—WILLIAM ARMSTRONG P—WILLIAM ARMSTRONG	58 JOHN MORFON 40 ACRES-10 Pct. & All. WARRANT—OCT. 10, 1774 SURVEY—OCT. 10, 1774 PATENT—OCT. 10, 1774 TO—THOMAS APFLECK H—THOMAS APFLECK P—THOMAS APFLECK	70 WILLIAM PARKER 40 ACRES-10 Pct. & All. WARRANT—JULY 24, 1793 SURVEY—JUNE 28, 1794 UNPATENTED AT THIS DATE
11 JOHN GORDON 40 ACRES-10 Pct. & All. WARRANT—DEC. 28, 1792 SURVEY—JULY 10, 1793 PATENT—AUG. 21, 1801 TO—GEORGE CADWALLADER, EXT. H—GEORGE CADWALLADER, EXT. P—GEORGE CADWALLADER, EXT.	23 SAMUEL REES 40 ACRES-10 Pct. & All. WARRANT—DEC. 28, 1792 SURVEY—JULY 10, 1793 PATENT—AUG. 21, 1801 TO—THOMAS WOOD H—THOMAS WOOD P—THOMAS WOOD	35 JAMES MORRELL 40 ACRES-10 Pct. & All. WARRANT—DEC. 28, 1792 SURVEY—JULY 10, 1793 PATENT—FEB. 11, 1794 TO—FREDERICK QUINER H—FREDERICK QUINER P—FREDERICK QUINER	47 HENRY TOLAND 40 ACRES-10 Pct. & All. WARRANT—JAN. 13, 1794 SURVEY—JAN. 13, 1794 PATENT—JAN. 13, 1794 TO—WILLIAM ARMSTRONG H—WILLIAM ARMSTRONG P—WILLIAM ARMSTRONG	59 FREDERICK QUINER 40 ACRES-10 Pct. & All. WARRANT—DEC. 28, 1792 SURVEY—JULY 10, 1793 PATENT—FEB. 11, 1794 TO—FREDERICK QUINER H—FREDERICK QUINER P—FREDERICK QUINER	71 WILLIAM PARKER 40 ACRES-10 Pct. & All. WARRANT—JULY 24, 1793 SURVEY—JUNE 28, 1794 UNPATENTED AT THIS DATE
12 NATHAN LOOPBOURROW 40 ACRES-10 Pct. & All. WARRANT—DEC. 28, 1792 SURVEY—JULY 10, 1793 PATENT—AUG. 21, 1801 TO—THOMAS WOOD H—THOMAS WOOD P—THOMAS WOOD	24 NATHAN LOOPBOURROW 40 ACRES-10 Pct. & All. WARRANT—DEC. 28, 1792 SURVEY—JULY 10, 1793 PATENT—AUG. 21, 1801 TO—THOMAS WOOD H—THOMAS WOOD P—THOMAS WOOD	36 JACOB THOMAS 40 ACRES-10 Pct. & All. WARRANT—DEC. 28, 1792 SURVEY—JULY 10, 1793 PATENT—AUG. 21, 1801 TO—THOMAS WOOD H—THOMAS WOOD P—THOMAS WOOD	48 JOHN BARRON, JR. 40 ACRES-10 Pct. & All. WARRANT—DEC. 28, 1792 SURVEY—JULY 10, 1793 PATENT—AUG. 21, 1801 TO—THOMAS WOOD H—THOMAS WOOD P—THOMAS WOOD	60 JOHN BARRON, JR. 40 ACRES-10 Pct. & All. WARRANT—DEC. 28, 1792 SURVEY—JULY 10, 1793 PATENT—AUG. 21, 1801 TO—THOMAS WOOD H—THOMAS WOOD P—THOMAS WOOD	72 WILLIAM PARKER 40 ACRES-10 Pct. & All. WARRANT—JULY 24, 1793 SURVEY—JUNE 28, 1794 UNPATENTED AT THIS DATE

A CONNECTED WARRANT TOWNSHIP MAP of Lebanon Township in Wayne County. The warrants, surveys, and patents bearing, respectively, the dates as above set forth, are constructed from and have been compared with the original drafts on file in the Bureau of Land Records, Department of Community Affairs, Commonwealth of Pennsylvania, under the direction of EDWARD D. PITCH, Director.

IN TESTIMONY WHEREOF: I have hereunto set my hand and caused the seal of the said Department to be affixed at Harrisburg, Pennsylvania, this seventh day of January A.D. one thousand nine hundred and seventy five.



Edward D. Pitch
Secretary of Community Affairs

