

LEBANON
TOWNSHIP

TOWNSHIP
LINE

DAMASCUS
TOWNSHIP

TOWNSHIP
LINE

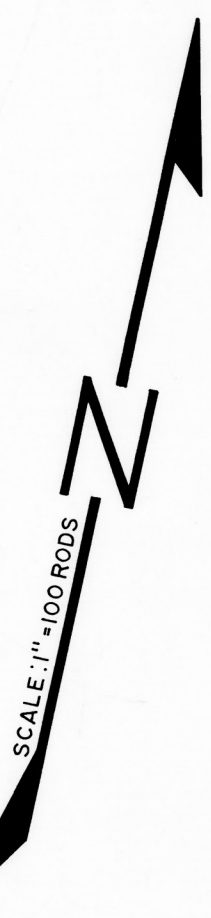
BERLIN
TOWNSHIP

TOWNSHIP
LINE

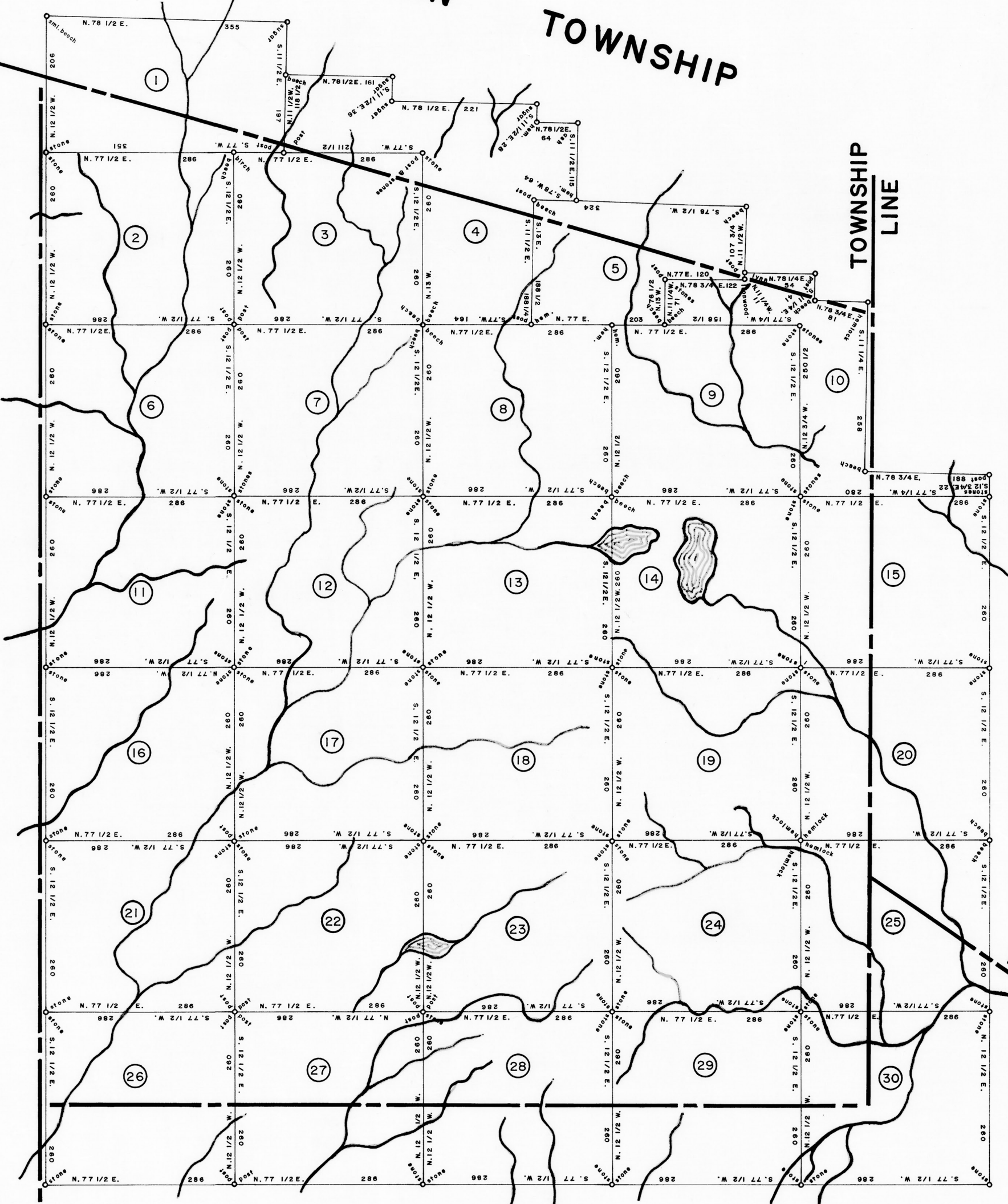
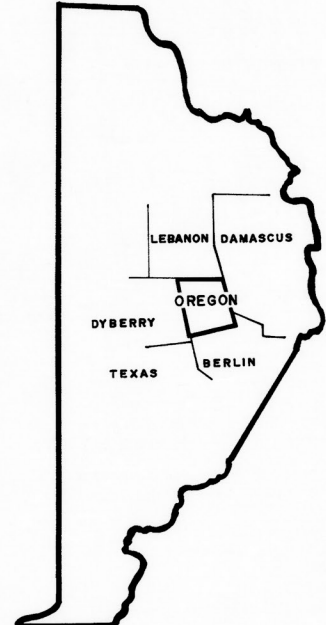
DYBERRY
TOWNSHIP

TOWNSHIP
LINE

TOWNSHIP
LINE



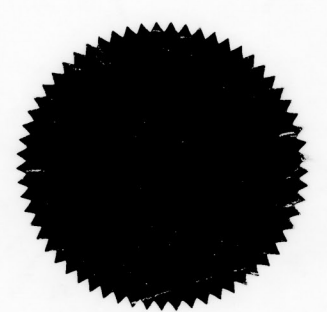
WAYNE
COUNTY



1 C 194 5 SALLOWES SHEWELL 421 ACRES-58 Perches & All. WARRANT-MARCH 30, 1793 SURVEY-JUNE 28, 1794 PATENT-AUG. 21, 1795 TO-THOMAS SHIELDS P-24-259 "Beech Wood"	13 C 199 213 DAVID SHIELDS 438 ACRES-70 Perches & All. WARRANT-JULY 23, 1785 SURVEY-NOV. 21, 1785 PATENT-JUNE 20, 1798 TO-THOMAS SHIELDS P-34-182 "Manderville"	25 C 44 146 WILLIAM DARAH 438 ACRES-70 Perches & All. WARRANT-JULY 23, 1785 SURVEY-NOV. 14, 1785 PATENT-FEB. 19, 1794 TO-THOMAS SHIELDS P-31-39 "Sugar Tree Grove"
2 C 194 11 THOMAS SHIELDS 438 ACRES-70 Perches & All. WARRANT-APRIL 14, 1789 SURVEY-APRIL 25, 1789 PATENT-AUG. 22, 1795 TO-THOMAS SHIELDS P-24-259 "Sugar Tree Bottom"	14 C 115 54 GEORGE LAWSON 438 ACRES-70 Perches & All. WARRANT-JULY 23, 1785 SURVEY-NOV. 16, 1785 PATENT-APRIL 24, 1794 TO-DANIEL SKINNER P-21-158 "Lawsons Farm"	26 Y 152 JOHN DOUGHERTY 438 ACRES-70 Perches & All. WARRANT-DEC. 8, 1785 SURVEY-MAY 22, 1787 PATENT-MAY 14, 1790 TO-JOHN DOUGHERTY P-15-288 "N 222"
3 C 194 2 JAMES SHIELDS 438 ACRES-70 Perches & All. WARRANT-APRIL 14, 1789 SURVEY-APRIL 26, 1789 PATENT-AUG. 21, 1795 TO-THOMAS SHIELDS P-27-93 "Elm Grove"	15 C 49 114 THOMAS FLAHAHAN 438 ACRES-70 Perches & All. WARRANT-JULY 23, 1785 SURVEY-NOV. 17, 1785 PATENT-APRIL 24, 1794 TO-DANIEL SKINNER P-21-158 "Cornfield"	27 D 11 260 THOMAS SHIELDS ESQ. 438 ACRES-70 Perches & All. WARRANT-DEC. 8, 1785 SURVEY-MAY 23, 1787 PATENT-AUG. 21, 1795 TO-THOMAS SHIELDS P-27-92 "Blackbirch Grove"
4 C 175 174 WILLIAM NICHOLS 405 ACRES-42 Perches & All. WARRANT-JULY 26, 1793 SURVEY-JUNE 26, 1794 PATENT-DEC. 21, 1871 TO-WILLIAM NICHOLS H-71-133	16 C 153 73 CHARLES MARSHALL 438 ACRES-70 Perches & All. WARRANT-DEC. 8, 1785 SURVEY-MAY 19, 1787 PATENT-APRIL 26, 1803 TO-MARK WILCOX P-51-51 "Station"	28 A 16 9 JOHN WOODS 438 ACRES-70 Perches & All. WARRANT-JULY 23, 1785 SURVEY-NOV. 20, 1785 PATENT-AUG. 5, 1812 TO-THOMAS SHIELDS H-7-384
5 C 215 46 ABNER SKINNER 300 ACRES & All. WARRANT-MARCH 29, 1794 SURVEY-JULY 15, 1794 PATENT-JAN. 27, 1802 TO-JASON TORRY H-47-93 "Eggs"	17 C 55 213 ROGER FLAHAHAN 438 ACRES-70 Perches & All. WARRANT-JULY 23, 1785 SURVEY-NOV. 23, 1785 PATENT-OCT. 8, 1804 TO-MARK WILCOX P-55-202 "Wilcox Farm"	29 C 2 31 FRANCIS ACKLEY 438 ACRES-70 Perches & All. WARRANT-JULY 23, 1785 SURVEY-NOV. 19, 1785 PATENT-AUG. 4, 1812 TO-THOMAS SHIELDS H-7-380
6 C 61 201 LEVI GARRET 438 ACRES-70 Perches & All. WARRANT-APRIL 14, 1789 SURVEY-APRIL 21, 1789 PATENT-JULY 27, 1812 TO-THOMAS SHIELDS H-7-347	18 C 21 225 TIMOTHY CAVENAUGH 438 ACRES-70 Perches & All. WARRANT-JULY 23, 1785 SURVEY-NOV. 22, 1785 PATENT-APRIL 26, 1803 TO-MARK WILCOX P-51-49 "Manchester"	30 C 124 16 JOSEPH LOWNES SR. 438 ACRES-70 Perches & All. WARRANT-JULY 23, 1785 SURVEY-NOV. 8, 1785 PATENT-AUG. 5, 1812 TO-THOMAS SHIELDS H-7-382
7 C 85 56 JOHN HOPIER 438 ACRES-70 Perches & All. WARRANT-APRIL 14, 1789 SURVEY-APRIL 22, 1789 PATENT-JULY 27, 1812 TO-THOMAS SHIELDS H-7-368	19 D 8 72 MARK WILCOX 438 ACRES-70 Perches & All. WARRANT-JULY 23, 1785 SURVEY-NOV. 16, 1785 PATENT-JUNE 20, 1798 TO-THOMAS SHIELDS P-34-184 "Cork"	
8 C 61 202 HUGH GOORLEY 438 ACRES-70 Perches & All. WARRANT-APRIL 14, 1789 SURVEY-APRIL 25, 1789 PATENT-JULY 27, 1812 TO-THOMAS SHIELDS H-7-347	20 C 205 133 THOMAS SHIELDS JR. 438 ACRES-70 Perches & All. WARRANT-JULY 23, 1785 SURVEY-NOV. 16, 1785 PATENT-MARCH 14, 1794 TO-THOMAS SHIELDS P-21-40 "Jerusalem"	
9 C 41 49 SAMUEL DILWORTH 438 ACRES-70 Perches & All. WARRANT-APRIL 14, 1789 SURVEY-APRIL 24, 1789 PATENT-JULY 27, 1812 TO-THOMAS SHIELDS H-7-349	21 C 133 72 CHRISTOPHER MARSHALL 438 ACRES-70 Perches & All. WARRANT-DEC. 8, 1785 SURVEY-MAY 21, 1787 PATENT-APRIL 26, 1803 TO-MARK WILCOX P-51-48 "Monticello"	
10 C 30 191 WILLIAM R. COGENS 252 ACRES-18 Perches & All. WARRANT-JULY 26, 1793 RE-SURVEY-SEPT. 18, 1815 PATENT-DEC. 21, 1871 TO-HENRY CRAMOND H-71-154	22 A 31 17 CHARLES VANCOUVER 438 ACRES-70 Perches & All. WARRANT-DEC. 8, 1785 SURVEY-MAY 24, 1787 PATENT-APRIL 26, 1803 TO-MARK WILCOX P-51-50 "Wilmington"	
11 D 6 190 JOHN WOODS 438 ACRES-70 Perches & All. WARRANT-APRIL 14, 1789 SURVEY-APRIL 20, 1789 PATENT-JULY 25, 1812 TO-THOMAS SHIELDS H-7-345	23 C 206 177 ROBERT SHIELDS, JR. 438 ACRES-70 Perches & All. WARRANT-JULY 23, 1785 SURVEY-NOV. 21, 1785 PATENT-FEB. 3, 1801 TO-THOMAS SHIELDS P-36-207 "Silver Mine"	
12 A 34 67 ROWLAND PARRY 438 ACRES-70 Perches & All. WARRANT-JULY 23, 1785 SURVEY-NOV. 22, 1785 PATENT-AUG. 7, 1812 TO-THOMAS SHIELDS H-7-393	24 C 194 1 JAMES SHIELDS 438 ACRES-70 Perches & All. WARRANT-JULY 23, 1785 SURVEY-NOV. 16, 1785 PATENT-AUG. 21, 1795 TO-THOMAS SHIELDS P-27-93 "Sugar Tree Grove"	

A CONNECTED WARRANT TOWNSHIP MAP of Oregon Township in Wayne County. The warrants, surveys, and patents bearing, respectively, the dates as above set forth, are constructed from and have been compared with the original drafts on file in the Bureau of Land Records, Department of Community Affairs, Commonwealth of Pennsylvania, under the direction of Edward D. Price, Director.

IN TESTIMONY WHEREOF: I have hereunto set my hand and caused the seal of the said Department to be affixed at Harrisburg, Pennsylvania, this twenty-seventh day of June A.D., one thousand nine hundred and seventy four.



Edward D. Price
Secretary of Community Affairs