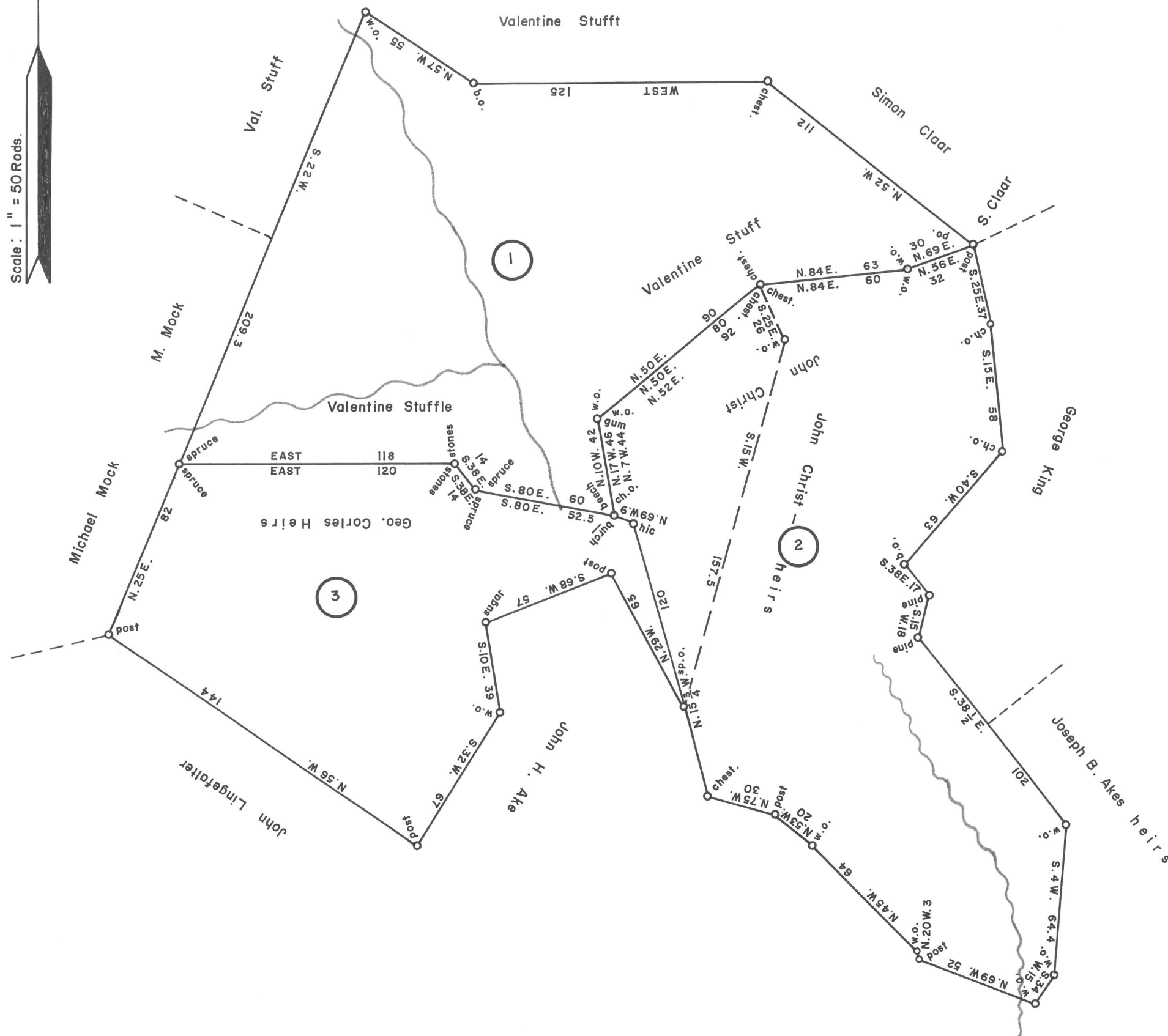


Scale: 1" = 50 Rods.



1
C—229—59
VALENTINE STUFFT
220 ACRES & Allowance
WARRANT NOV. 5, 1846
SURVEY DEC. 1, 1846
PATENT JAN. 1, 1849
To—VALENTINE STUFFT
H—47—36

2
C—34—215
JACOB CHRIST
216 ACRES & Allowance
WARRANT JUN. 14, 1850
SURVEY JUN. 15, 1847
PATENT JUL. 6, 1869
To—John T. Crist et al.
H—64—83

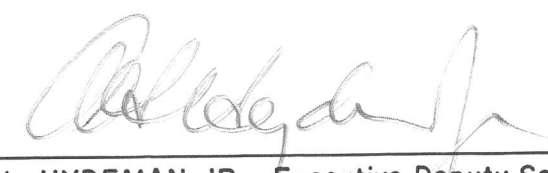
3
C—33—273
ANN REBECCA CONRAD
157 ACRES—152 PERCHES & AIL.
WARRANT JUN. 20, 1850
SURVEY MAY 29, 1850
PATENT MAR. 20, 1851
To—ANN REBECCA CONRAD
H—48—82

A CONNECTED DRAFT: of three (3) tracts of land which, when surveyed, were situate in Union Township, Bedford County. The draft has been constructed from and compared with the original drafts on file in the Bureau of Land Records, Department of Community Affairs, Commonwealth of Pennsylvania, under the direction of Edward D. Price, Director.

IN TESTIMONY WHEREOF: I have hereunto set my hand and caused the seal of the said Department to be affixed at Harrisburg, Pennsylvania, this twenty-fifth day of July A. D., one thousand nine hundred and seventy five.



WILLIAM H. WILCOX
Secretary of Community Affairs

By: 
A. L. HYDEMAN, JR., Executive Deputy Secretary

5010