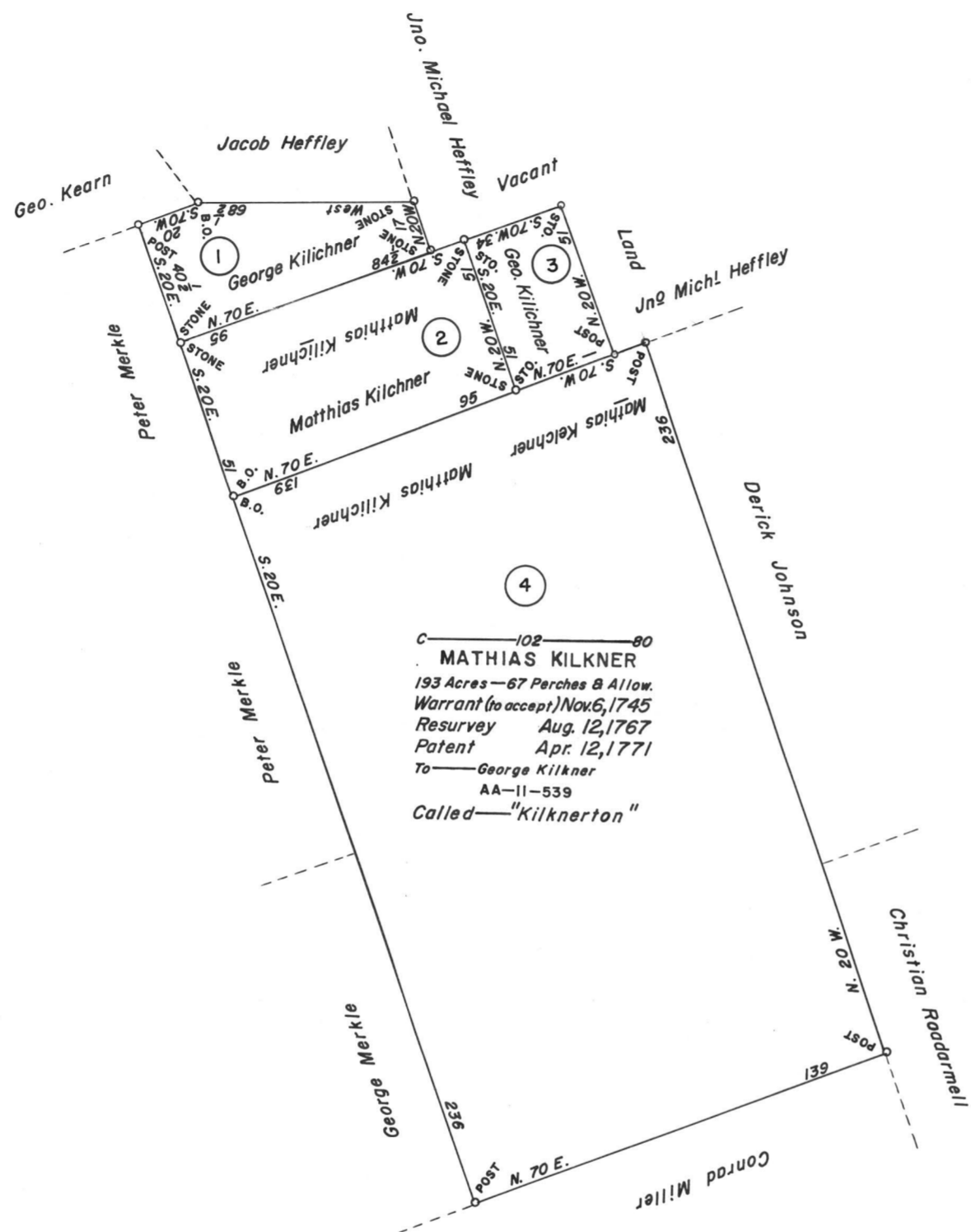


SCALE: 1" = 50 Rods.



①  
C—107—214  
GEORGE KELCHNER  
15 Acres—110 Perches & Allow.  
Appl. No. 2806 (E. S.)  
Survey Aug. 30, 1767  
Patent Oct. 23, 1767  
On Warrant to Accept  
dated—Oct. 22, 1767  
To—GEORGE KELCHNER  
AA—10—141  
Called—“Chestnuthill”

②  
C—102—99  
MATTHIAS KILKNER  
28 Acres—90 Perches & Allow.  
Warrant Sept. 5, 1748  
Resurvey Aug. 12, 1767  
Patent Apr. 12, 1771  
To—George Kilchner  
AA—11—539  
Called—“Kilkner’s Folly”

③  
D—53—69  
GEORGE KELCHNER  
10 Acres—3 Perches & Allow.  
Appl. No. 1826 (E. S.)  
Appl. date Aug. 26, 1766  
Survey Nov. 10, 1766  
(Unpatented at this date)

C—102—90  
MATTHIAS KILKNER  
193 Acres—67 Perches & Allow.  
Warrant (to accept) Nov. 6, 1745  
Resurvey Aug. 12, 1767  
Patent Apr. 12, 1771  
To—George Kilchner  
AA—11—539  
Called—“Kilkner’s Folly”

**A CONNECTED DRAFT:** of four (4) tracts of land which, when surveyed, were situate as follows: two (2) in Richmond Township, Philadelphia (now Berks) County and two (2) in Richmond Township, Berks County. The draft has been constructed from and compared with the original records on file in the Bureau of Land Records, Department of Internal Affairs of the Commonwealth of Pennsylvania, under the direction of Anthony G. Reese, Director.

**IN TESTIMONY WHEREOF:** I have hereunto set my hand and caused the seal of the said Department to be affixed at Harrisburg, Pennsylvania this twenty-first day of January A. D., one thousand nine hundred and sixty-three.



GENEVIEVE BLATT  
Secretary of Internal Affairs.

By: *William C. Seyler*  
WILLIAM C. SEYLER, Deputy Secretary.