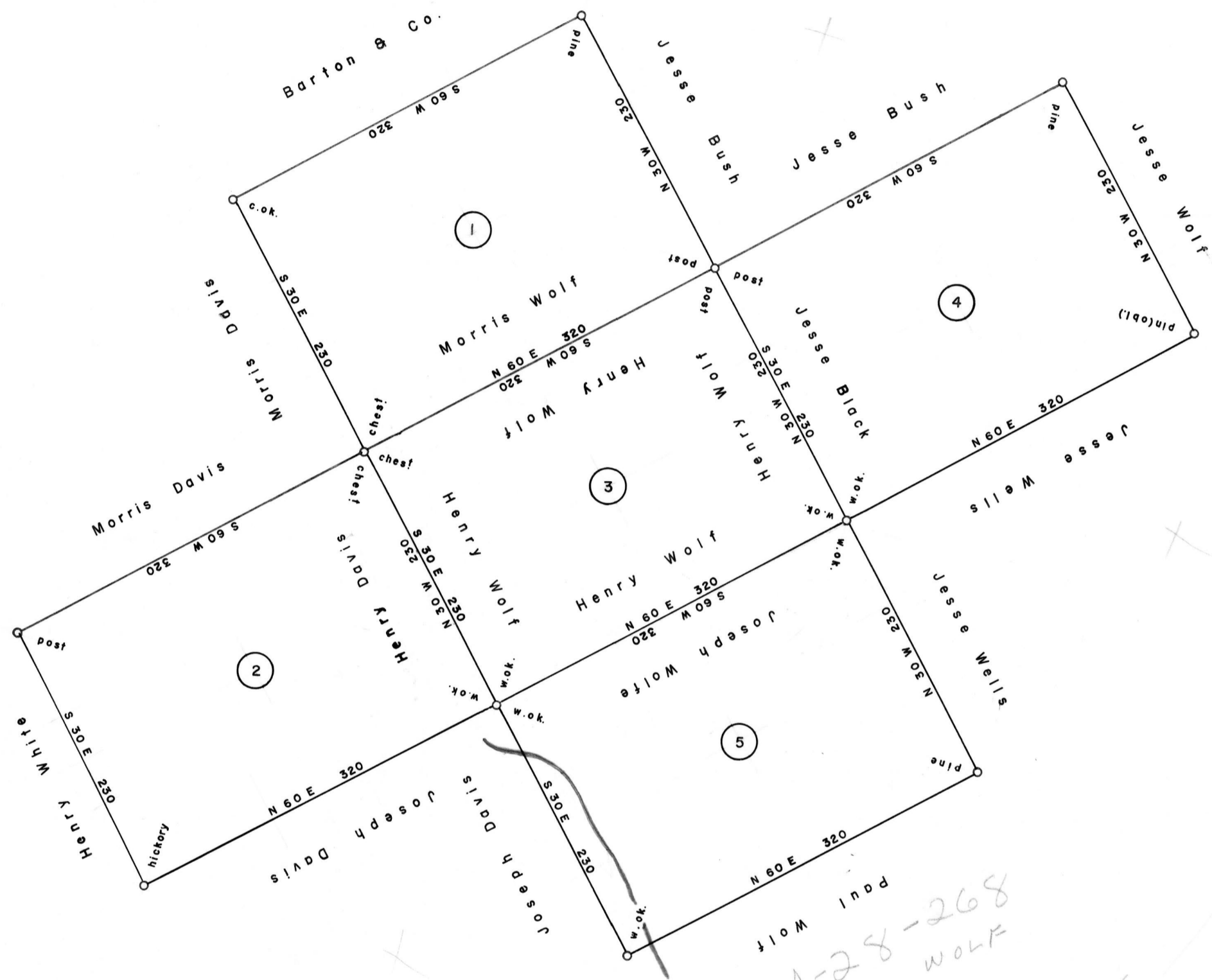


SCALE: 1" = 100 Rods



①  
A—28—270  
MORRIS WOLF  
433 As. 163 Ps. 8 All.  
WARRANT DEC. 26, 1793  
SURVEY NOV. 7, 1794  
PATENT OCT. 7, 1907  
To - D. E. Notley  
H - 77-274

②  
A—27—85  
HENRY DAVIS  
433 As. 163 Ps. 8 All.  
WARRANT DEC. 26, 1793  
SURVEY NOV. 6, 1794  
PATENT OCT. 7, 1907  
To - D. E. Notley  
H - 77-275

③  
A—35—102  
HENRY WOLF  
433 As. 163 Ps. 8 All.  
WARRANT DEC. 26, 1793  
SURVEY NOV. 5, 1794  
PATENT OCT. 7, 1907  
To - D. E. Notley  
H - 77-277

④  
A—71—294  
JESSE BLACK  
433 As. 163 Ps. 8 All.  
WARRANT DEC. 26, 1793  
SURVEY NOV. 5, 1794  
PATENT AUG. 23, 1869  
To - Robert Hewitt  
H - 65-142

⑤  
A—28—269  
JOSEPH WOLF  
433 As. 163 Ps. 8 All.  
WARRANT DEC. 26, 1793  
SURVEY NOV. 7, 1794  
PATENT AUG. 16, 1869  
To - Alexander L. Holliday  
H - 65-131

A CONNECTED DRAFT of five(5) tracts of land, which when surveyed, were situate in Franklin or Frankstown (now Dean) Township, Mifflin (now Cambria) County. The draft has been constructed from and compared with the original drafts on file in the Bureau of Land Records, Department of Community Affairs, Commonwealth of Pennsylvania, under the direction of Edward D. Price, Director.

IN TESTIMONY WHEREOF: I have hereunto set my hand and caused the seal of the said Department to be affixed at Harrisburg, Pennsylvania this twenty first day of September A.D., one thousand nine hundred and seventy one.



WILLIAM H. WILCOX  
Secretary of Community Affairs

By: *A. L. Hydemán, Jr.*  
A. L. HYDEMAN, JR., Deputy Secretary