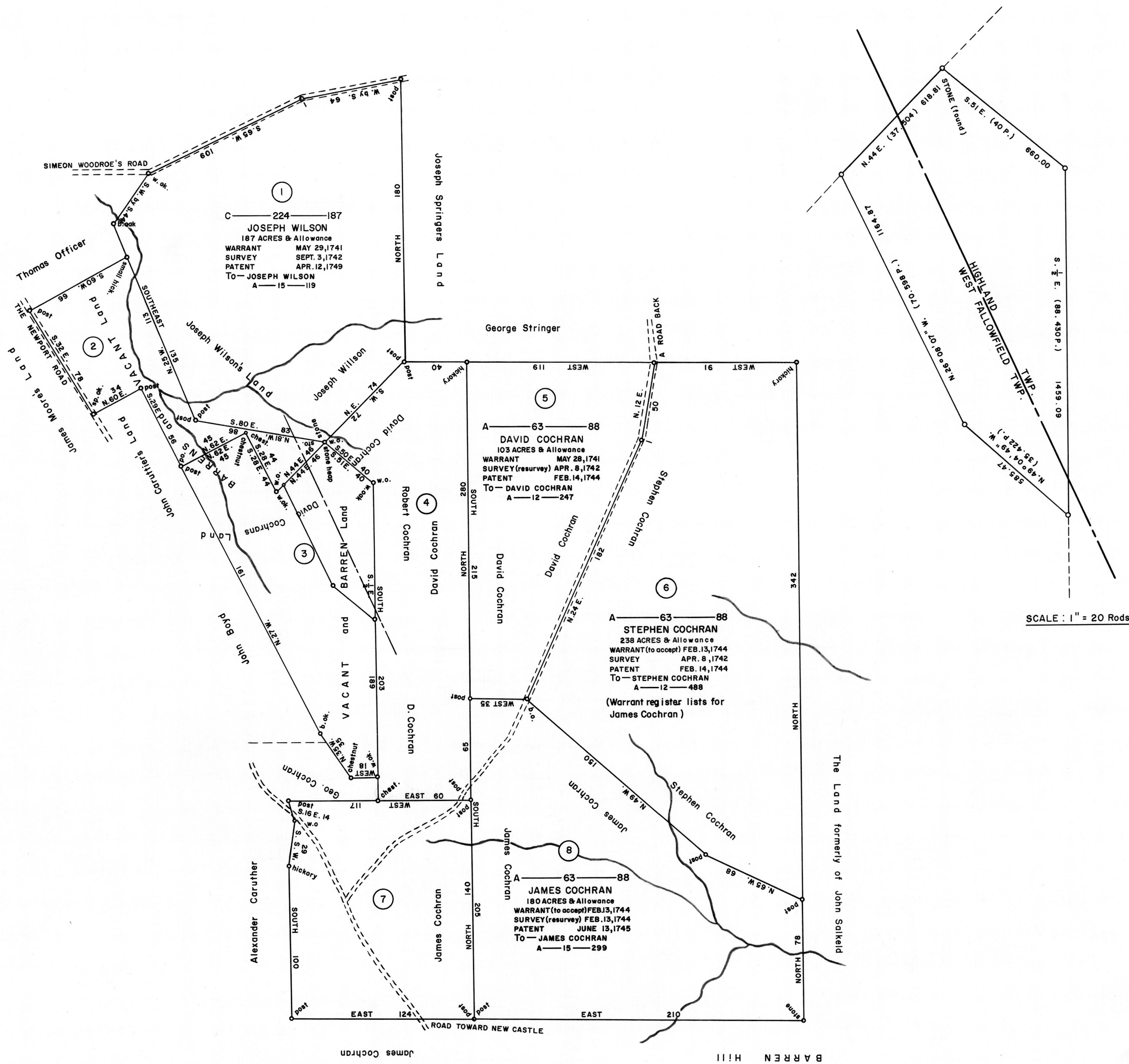


Scale: 1" = 50 Rods



A CONNECTED DRAFT of eight (8) tracts of land which, when surveyed, were situate as follows: two (2) in West Fallowfield Township; and six (6) in Fallowfield Township, Chester County. The draft has been constructed from and compared with the original drafts on file in the Bureau of Land Records, Department of Community Affairs, Commonwealth of Pennsylvania, under the direction of Edward D. Price, Director.

IN TESTIMONY WHEREOF: I have hereunto set my hand and caused the seal of the said Department to be affixed at Harrisburg, Pennsylvania, this sixteenth day of February A. D., one thousand nine hundred seventy one.

WILLIAM H. WILCOX
Secretary of Community Affairs

By: *A. L. Hydeman Jr.*
A. L. HYDEMAN JR., Deputy Secretary.