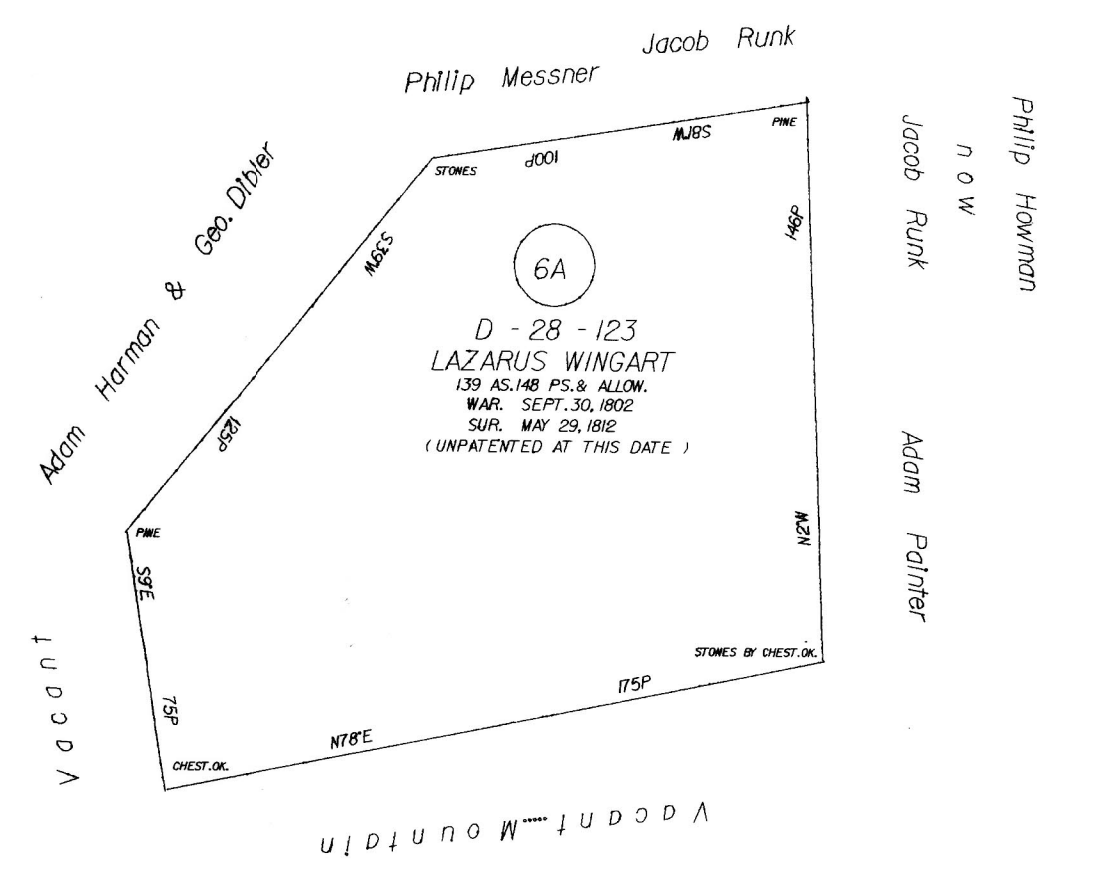
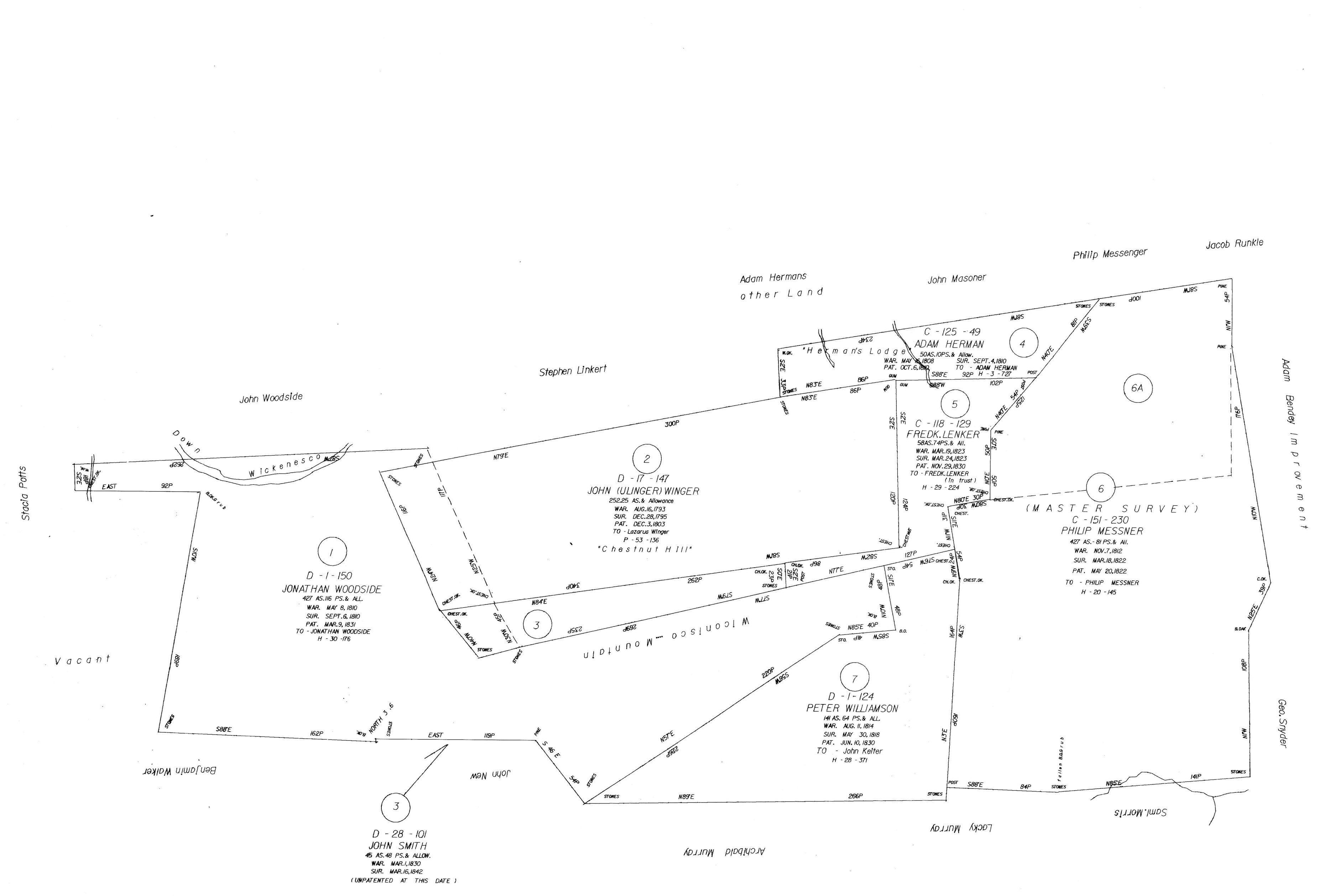
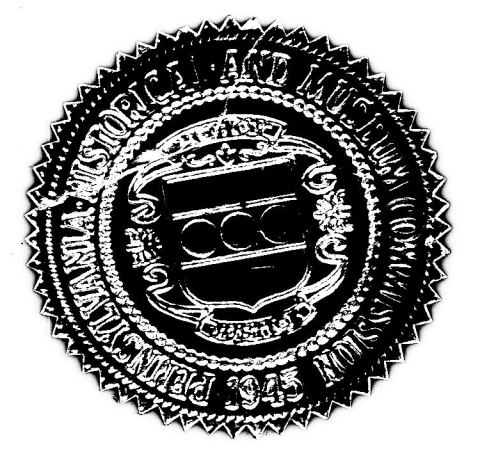


Scale: 1" = 50 Rods



A CONNECTED DRAFT of eight (8) tracts of land, which when surveyed, were situate as follows: four in Upper Paxton Township; two (2) in Mifflin Township; and two (2) in Halifax Township, all located in Dauphin County. The draft has been constructed from and compared with the original drafts on file in the Division of Land Records, Bureau of Archives and History, Historical and Museum Commission, Commonwealth of Pennsylvania under the direction of Edward D. Price, Chief.

IN TESTIMONY WHEREOF: I have hereunto set my hand and caused the seal of the said Commission to be affixed at Harrisburg, Pennsylvania, this **first** day of July A. D. one thousand nine hundred and eighty six.



LARRY E. TISE, Executive Director  
Historical and Museum Commission

By: *Harry E. Whipkey*  
HARRY E. WHIPKEY, Director, Bureau of Archives and History

SCALE 1" = 50 P