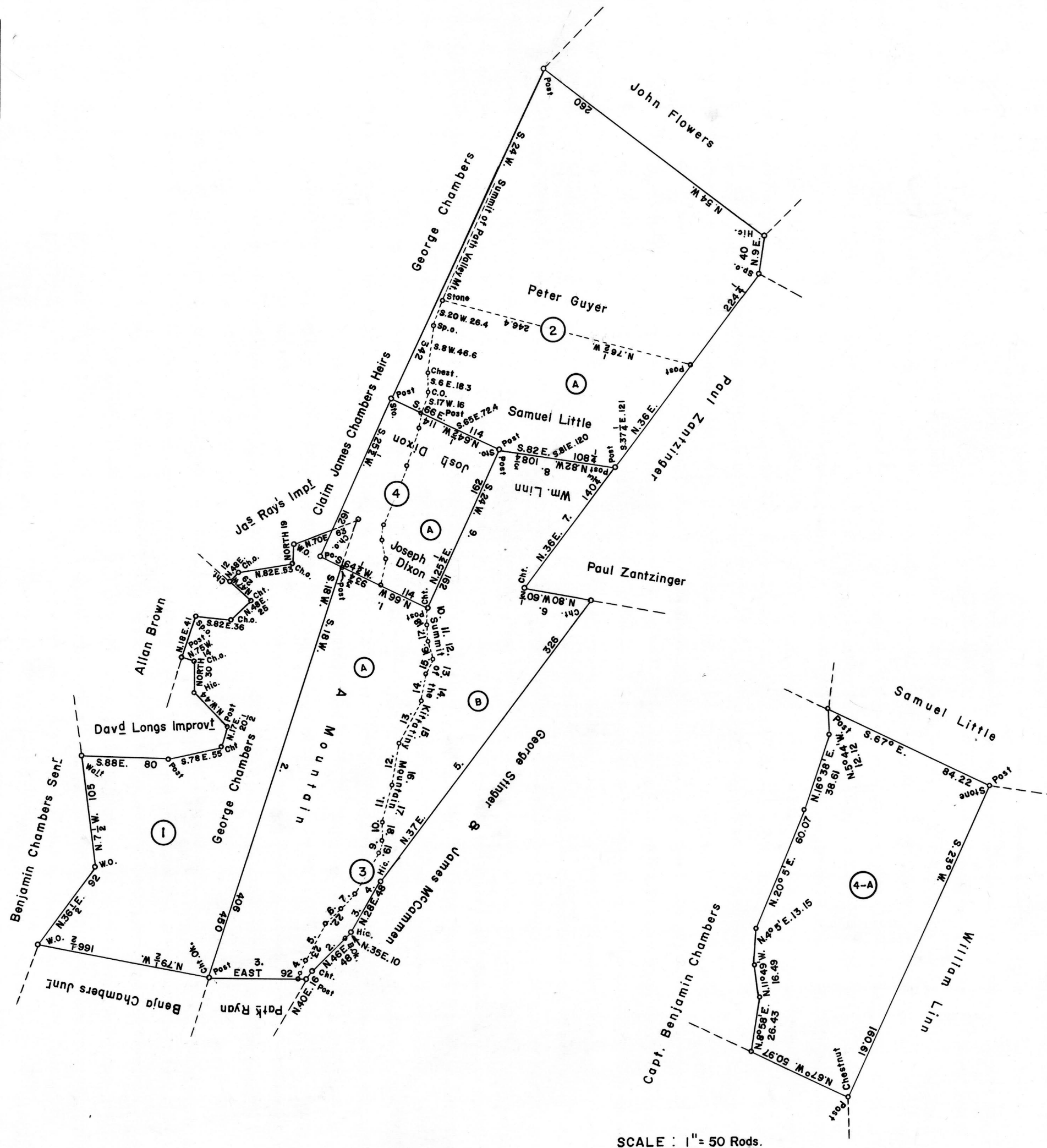


SCALE : 1" = 100 Rods.



SCALE : 1" = 50 Rods.

①
 C—25—147
CAPT. BENJAMIN CHAMBERS
 285 Acres & Allowance
 Warrant July 5, 1784
 Survey June 22, 1785
 Patent Sept. 27, 1785
 To—BENJAMIN CHAMBERS
 P—4—25 and 26
 Called—"Mountain Tract"

②
 D—23—276
SAMUEL LITTLE
 440 Acres—157 Perches & Allow.
 Warrant Jan. 4, 1793
 Survey Aug 21, 1794
 (Unpatented at this date)

②-A
 C—113—170
 Resurvey Dec. 8, 1852
 Patented Apr. 27, 1854
 147 Acres—150 Perches & Allow.
 To—Frederick Gilbert
 H—51—144

③
 C—126—145
WILLIAM LINN
 441 Acres—104 Perches & Allow.
 Warrant Dec 11, 1792
 Survey Aug 20, 1794
 (Unpatented at this date)

③-A
 B—12—195
 Resurvey Dec. 10, 1852
 Patent Mar. 7, 1871
 246 Acres—132 Perches & Allow.
 To—Southern Pennsylvania
 Iron and Railroad Company
 H—69—425
Courses and Distances—
 (Beginning at Post)
 1. N. 68 W. 94 to Post
 2. S. 15 W. 435.5 to Post
 3. EAST 86 to Post
 4. N. 20 E. 18 to Stones
 5. N. 16 1/2 E. 45 to Chest.
 6. N. 31 E. 30 to Hick.
 7. N. 23 E. 23.6 to Birch
 8. N. 31 E. 46.5 to Chest.
 9. N. 15 E. 14.6 to Stones
 10. N. 1 W. 16 to Pine
 11. N. 14 E. 37 to Stones
 12. N. 9 E. 40 to Stones
 13. N. 29 E. 47 to C.Ok.
 14. N. 12 E. 25 to C.Ok.
 15. N. 27 1/2 E. 18 to Chest.
 16. N. 20 1/2 W. 18 to Chest.
 17. N. 4 1/2 W. 14.7 to C.Ok.
 18. N. 1 W. 15.3 to (Begin)

③-B
 C—113—169
 Resurvey Dec 10, 1852
 Patent Apr. 27, 1854
 301 Acres—31 Perches & Allow.
 To—Frederick Gilbert
 H—51—144
Courses and Distances—
 (Beginning at Post)
 1. N. 42 E. 16 to Chest.
 2. N. 46 E. 53 to Post
 3. N. 35 E. 10.1 to Hick.
 4. N. 29 E. 47 to Stones
 5. N. 40 1/2 E. 340 to Chest.
 6. N. 78 W. 61 to C.Ok.
 7. N. 37 1/2 E. 140 to Post
 8. N. 81 W. 120 to Post
 9. S. 41 W. 152 to Post
 10. S. 1 E. 15.3 to C.Ok.
 11. S. 4 1/4 E. 14.7 to Chest.
 12. S. 20 1/2 E. 21.8 to C.Ok.
 13. S. 27 1/2 W. 18 to Stones
 14. S. 12 W. 25 to C.Ok.
 15. S. 29 W. 47 to Stones
 16. S. 9 W. 40 to Rock
 17. S. 14 W. 37 to Pine
 18. S. 1 E. 16 to Stones
 19. S. 15 W. 14.6 to Chest.
 20. S. 31 W. 46.5 to Birch
 21. S. 23 W. 23.6 to Hick.
 22. S. 31 W. 30 to Chest.
 23. S. 16 1/2 W. 45 to Stones
 24. S. 20 W. 18 to Sp.ok.
 25. S. 1/2 E. 1.1 to Mark
 26. EAST 7.9 to (Begin.)

④
 D—23—188
JOSEPH DICKSON
 108 Acres—141 Perches & Allow.
 Warrant Sept. 4, 1792
 Survey June 13, 1845
 (Unpatented at this date)

A CONNECTED DRAFT : of seven (7) tracts of land which, when surveyed, were situate as follows: one (1) in Fannett Township, Cumberland (now Franklin) County; two (2) in Fannett Township; two (2) in St. Thomas Township; and two (2) in Metal Township, Franklin County. The warrants, surveys, and patents bearing, respectively, the dates as above set forth, are constructed from and have been compared with the original drafts on file in the Bureau of Land Records of the Department of Internal Affairs, Commonwealth of Pennsylvania, under the direction of A. G. Reese, Director.

IN TESTIMONY WHEREOF: I have hereunto set my hand and caused the seal of the said Department to be affixed at Harrisburg, Pennsylvania, this twenty-first day of January A.D., one thousand nine hundred and sixty-four.



GENEVIEVE BLATT
 Secretary of Internal Affairs.

By: *William C. Seyler*
 WILLIAM C. SEYLER, Deputy Secretary.