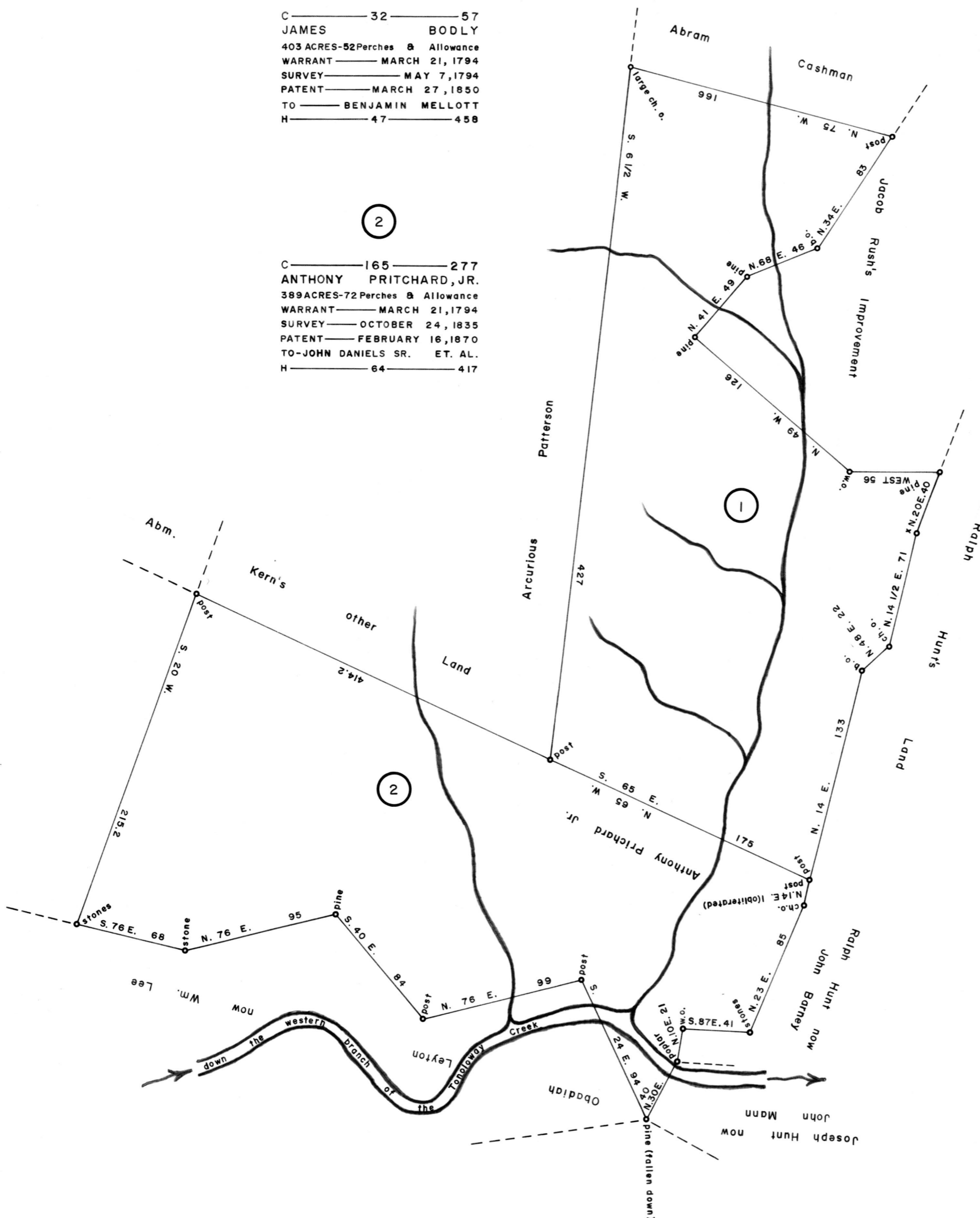


(1)

C ————— 32 ————— 57
 JAMES BODLY
 403 ACRES-52 Perches & Allowance
 WARRANT — MARCH 21, 1794
 SURVEY — MAY 7, 1794
 PATENT — MARCH 27, 1850
 TO — BENJAMIN MELLOTT
 H ————— 47 ————— 458

(2)

C ————— 165 ————— 277
 ANTHONY PRITCHARD, JR.
 389 ACRES-72 Perches & Allowance
 WARRANT — MARCH 21, 1794
 SURVEY — OCTOBER 24, 1835
 PATENT — FEBRUARY 16, 1870
 TO — JOHN DANIELS SR. ET. AL.
 H ————— 64 ————— 417



A CONNECTED DRAFT: of two (2) tracts of land, which when surveyed, were situate in Bethel Township, Bedford County, (now Fulton County). The draft has been constructed from and compared with original drafts remaining on file in the Bureau of Land Records, Department of Community Affairs, Commonwealth of Pennsylvania, under the direction of Edward D. Price, Director.

IN TESTIMONY WHEREOF: I have hereunto set my hand and caused the seal of the said Department to be affixed at Harrisburg, Pennsylvania, this twenty ninth day of November A. D., one thousand nine hundred and seventy two.

WILLIAM H. WILCOX
 Secretary of Community Affairs

[Signature]

By: A. L. HYDEMAN JR., Deputy Secretary