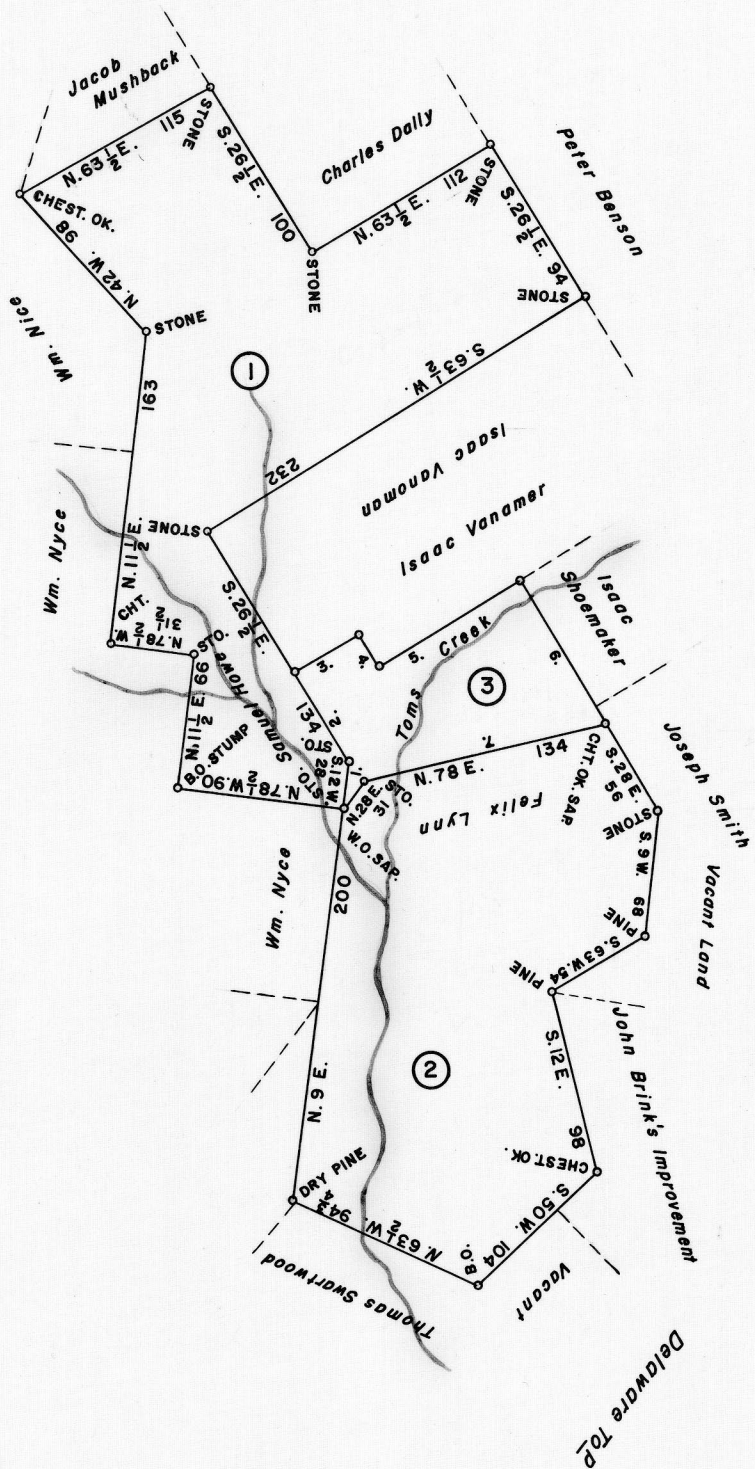


SCALE: 1" = 100 Rods.



①

C—204—281  
 SOLOMON SKYLAR  
 248 Acres—71 Perches & Allow.  
 Warrant Apr. 10, 1854  
 Survey May 3, 1854  
 Patent Feb. 8, 1907  
 To—Moses C. Nyce  
 H—77—225

②

C—115—48  
 FELIX LINN  
 235 Acres—150 Perches & Allow.  
 Warrant June 11, 1785  
 Survey Oct. 4, 1786  
 Patent Feb. 21, 1794  
 To—John Hart  
 P—20—280  
 Called—“St. Johns”

③

C—126—217  
 MOSES LITTS  
 54 Acres—41 Perches & Allow.  
 Warrant July 25, 1825  
 Survey Nov. 10, 1859  
 Order of Resurvey May 12, 59  
 Patent Aug. 19, 1872  
 To—Philip M. Countryman  
 H—71—424

Courses and Distances  
 Beginning at STONE:

1. N. 14 E. 25 to STONE
2. N. 26 1/2 W. 56 to STONE
3. N. 63 1/2 E. 40 to STONE
4. S. 26 1/2 E. 21 to STONE
5. N. 63 1/2 E. 86 to STONE
6. S. 26 1/2 E. 85 to STONE
7. S. 80 1/2 W. 134 to STONE
8. S. 33 1/2 W. 16.31 to Beginning

**A CONNECTED DRAFT:** of three (3) tracts of land which, when surveyed, were situate as follows: one (1) on Swartzwoods Mill Creek, Northampton County; and two (2) in Lehman Township, Pike County. The draft has been constructed from and compared with the original records on file in the Bureau of Land Records of the Department of Internal Affairs, Commonwealth of Pennsylvania, under the direction of Anthony G. Reese, Director.

**IN TESTIMONY WHEREOF:** I have hereunto set my hand and caused the seal of the said Department to be affixed at Harrisburg, Pennsylvania this second day July A.D., one thousand nine hundred and sixty-three.



GENEVIEVE BLATT  
 Secretary of Internal Affairs

By: William C. Seyler  
 WILLIAM C. SEYLER, Deputy Secretary.

11625