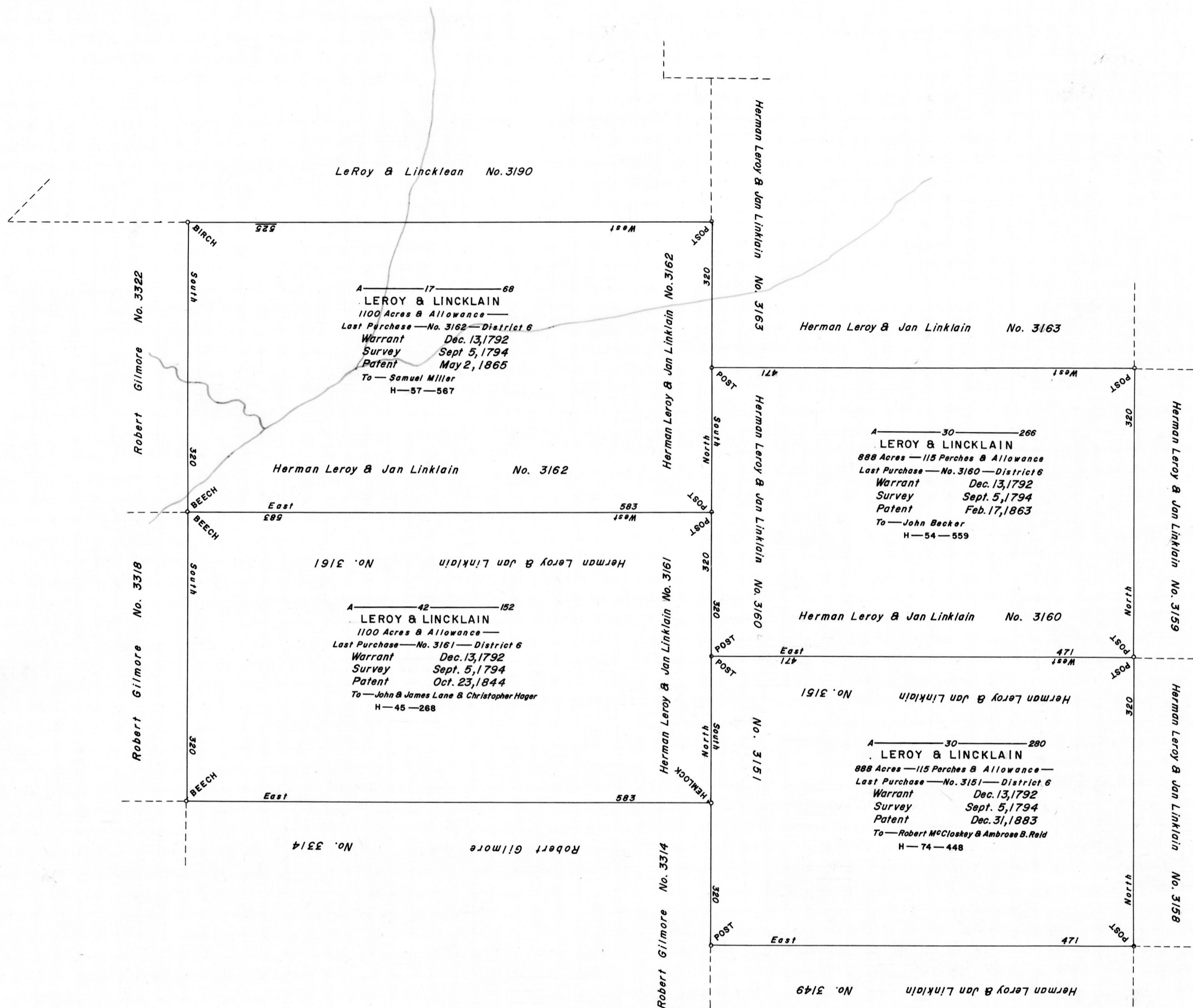


SCALE: 1" = 100 Rods



A CONNECTED DRAFT of four (4) tracts of land which, when surveyed, were situate as follows: one (1) in Northumberland County; two (2) in Northumberland (now Forest) County; and one (1) in Northumberland (now Jefferson) County. The draft has been constructed from and compared with the records on file in the Bureau of Land Records, Department of Internal Affairs, Commonwealth of Pennsylvania, under the direction of Anthony G. Reese, Director.

IN TESTIMONY WHEREOF: I have hereunto set my hand and caused the seal of the said Department to be affixed at Harrisburg, Pennsylvania this twenty-fifth day of April A.D., one thousand nine hundred and sixty-two.



GENEVIEVE BLATT
Secretary of Internal Affairs.

By: *William C. Seyler*
WILLIAM C. SEYER, Deputy Secretary