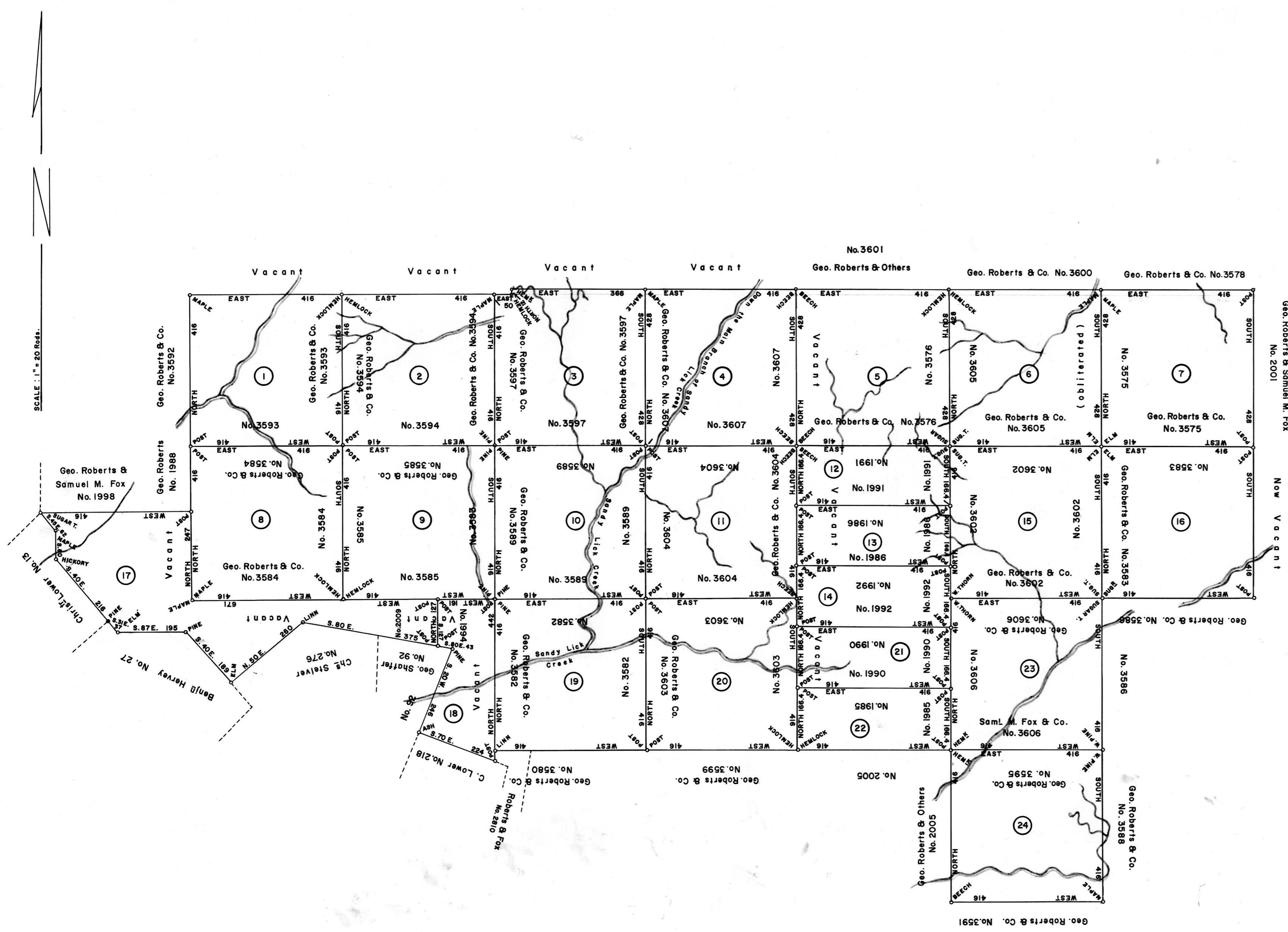


SCALE: 1" = 20 Rods.



- 1
A—61—218
GEORGE ROBERTS et al.
Tract No. 3593—Last Purchase
1020 Acres—60 Perches & Allow
Warrant Jan. 4, 1793
Survey June 10, 1793
Patent Sept. 7, 1795
To—GEORGE ROBERTS et al.
P—26—338
Called—"Walnut Bottom"
- 2
A—61—293
GEORGE ROBERTS et al.
Tract No. 3594—Last Purchase
1020 Acres—60 Perches & Allow
Warrant Jan. 4, 1793
Survey June 10, 1793
Patent Sept. 17, 1795
To—GEORGE ROBERTS et al.
P—26—338
Called—"Pine Grove"
- 3
A—61—64
GEORGE ROBERTS et al.
Tract No. 3597—Last Purchase
1046 Acres—43 Perches & Allow
Warrant Jan. 4, 1793
Survey June 10, 1793
Patent Sept. 7, 1795
To—GEORGE ROBERTS et al.
P—27—173
Called—"Sportsman Retreat"
- 4
A—61—298
GEORGE ROBERTS et al.
Tract No. 3607—Last Purchase
1049 Acres—129 Perches & Allow
Warrant Jan. 4, 1793
Survey June 10, 1793
Patent Sept. 17, 1795
To—GEORGE ROBERTS et al.
P—27—173
Called—"Partnership"
- 5
A—61—176
GEORGE ROBERTS et al.
Tract No. 3576—Last Purchase
1049 Acres—129 Perches & Allow
Warrant Jan. 4, 1793
Survey July 10, 1794
Patent Dec. 15, 1795
To—GEORGE ROBERTS et al.
P—27—235
Called—"Hartford"
- 6
A—61—131
GEORGE ROBERTS et al.
Tract No. 3605—Last Purchase
1049 Acres—129 Perches & Allow
Warrant Jan. 4, 1793
Survey July 6, 1794
Patent Dec. 5, 1795
To—GEORGE ROBERTS et al.
P—27—235
Called—"Sugar Tree Grove"
- 7
A—61—180
GEORGE ROBERTS et al.
Tract No. 3575—Last Purchase
1049 Acres—129 Perches & Allow
Warrant Jan. 4, 1793
Survey July 8, 1794
Patent Dec. 14, 1795
To—GEORGE ROBERTS et al.
P—27—236
Called—"Devenport"
- 8
A—61—140
GEORGE ROBERTS et al.
Tract No. 3584—Last Purchase
1020 Acres—60 Perches & Allow
Warrant Jan. 4, 1793
Survey June 11, 1793
Patent Sept. 17, 1795
To—GEORGE ROBERTS et al.
P—26—339
Called—"Milton"
- 9
E—154
GEORGE ROBERTS et al.
Tract No. 3584—Last Purchase
1020 Acres—60 Perches & Allow
Warrant Jan. 4, 1793
Survey June 11, 1793
Patent Sept. 5, 1795
To—GEORGE ROBERTS et al.
P—26—339
Called—"Fertility"
- 10
A—61—469
GEORGE ROBERTS et al.
Tract No. 3589—Last Purchase
1020 Acres—60 Perches & Allow
Warrant Jan. 4, 1793
Survey June 11, 1793
Patent Sept. 5, 1795
To—GEORGE ROBERTS et al.
P—26—341
Called—"Long Meadow"
- 11
A—61—296
GEORGE ROBERTS et al.
Tract No. 3604—Last Purchase
1020 Acres—60 Perches & Allow
Warrant Jan. 4, 1793
Survey June 10, 1793
Patent Sept. 7, 1795
To—GEORGE ROBERTS et al.
P—26—338
Called—"Hempfield"
- 12
A—61—171
GEORGE ROBERTS et al.
Tract No. 1991—Last Purchase
408 Acres—32 Perches & Allow
Warrant Oct. 15, 1792
Survey July 10, 1794
Patent Dec. 15, 1795
To—GEORGE ROBERTS et al.
P—26—332
Called—"Rich Plain"
- 13
A—61—121
GEORGE ROBERTS et al.
Tract No. 1986—Last Purchase
408 Acres—32 Perches & Allow
Warrant Oct. 15, 1792
Survey July 10, 1794
Patent Dec. 14, 1795
To—GEORGE ROBERTS et al.
P—26—336
Called—"Falmouth"
- 14
E—157
GEORGE ROBERTS et al.
Tract No. 1992—Last Purchase
408 Acres—32 Perches & Allow
Warrant Oct. 15, 1792
Survey July 10, 1794
Patent Dec. 15, 1795
To—GEORGE ROBERTS et al.
P—26—338
Called—"Tritau"
- 15
A—61—189
GEORGE ROBERTS et al.
Tract No. 3602—Last Purchase
1020 Acres—60 Perches & Allow
Warrant Jan. 4, 1793
Survey July 6, 1794
Patent Dec. 5, 1795
To—GEORGE ROBERTS et al.
P—26—339
Called—"Fertility"
- 16
A—61—133
GEORGE ROBERTS et al.
Tract No. 3583—Last Purchase
1020 Acres—60 Perches & Allow
Warrant Jan. 4, 1793
Survey July 6, 1794
Patent Dec. 11, 1795
To—GEORGE ROBERTS et al.
P—26—390
Called—"Bristol"
- 17
B—91
GEORGE ROBERTS et al.
Tract No. 2009—Last Purchase
1099 Acres & Allowance
Warrant Oct. 15, 1792
Survey Aug. 5, 1795
Patent Aug. 24, 1805
To—HUGH ROBERTS (Executor)
P—57—221
Called—"Fox-hall"
- 18
A—61—177
GEORGE ROBERTS et al.
Tract No. 1994—Last Purchase
409 Acres & Allowance
Warrant Oct. 15, 1792
Survey Aug. 5, 1795
Patent Feb. 25, 1801
To—GEORGE ROBERTS et al.
P—26—236
Called—"Partnership"
- 19
E—155
GEORGE ROBERTS et al.
Tract No. 3582—Last Purchase
1020 Acres—60 Perches & Allow
Warrant Jan. 4, 1793
Survey June 11, 1793
Patent Sept. 17, 1795
To—GEORGE ROBERTS et al.
P—26—335
Called—"Mount Holly"
- 20
A—61—288
GEORGE ROBERTS et al.
Tract No. 3603—Last Purchase
1020 Acres—60 Perches & Allow
Warrant Jan. 4, 1793
Survey June 10, 1793
Patent Sept. 17, 1795
To—GEORGE ROBERTS et al.
P—27—174
Called—"Peru"
- 21
A—61—178
GEORGE ROBERTS et al.
Tract No. 1990—Last Purchase
408 Acres—32 Perches & Allow
Warrant Oct. 15, 1792
Survey July 10, 1794
Patent Dec. 14, 1795
To—GEORGE ROBERTS et al.
P—27—233
Called—"Dartmouth"
- 22
A—61—176
GEORGE ROBERTS et al.
Tract No. 1985—Last Purchase
408 Acres—25 Perches & Allow
Warrant Oct. 15, 1792
Survey July 10, 1794
Patent Dec. 15, 1795
To—GEORGE ROBERTS et al.
P—26—335
Called—"Wheatfield"
- 23
A—61—126
GEORGE ROBERTS et al.
Tract No. 3608—Last Purchase
1020 Acres—60 Perches & Allow
Warrant Jan. 4, 1793
Survey July 6, 1794
Patent Dec. 5, 1795
To—GEORGE ROBERTS et al.
P—27—174
Called—"Long Plane"
- 24
A—61—178
GEORGE ROBERTS et al.
Tract No. 3595—Last Purchase
1020 Acres—60 Perches & Allow
Warrant Jan. 4, 1793
Survey July 7, 1794
Patent Dec. 11, 1795
To—GEORGE ROBERTS et al.
P—26—391
Called—"Eden"

A CONNECTED DRAFT of twenty-four (24) tracts of land which, when surveyed, were situate as follows: one (1) on a branch of Sandy Lick Creek; four (4) on Sandy Lick and Anderson Creeks; four (4) on Anderson Creek; nine (9) on Sandy Lick Creek; one (1) on Sinnemahoning Creek; three (3) on branch of Sinnemahoning and Anderson Creeks, Northumberland County; and two (2) on Sandy Lick Creek, Lycoming County. The draft has been constructed from and compared with the original drafts on file in the Bureau of Land Records, Department of Internal Affairs, Commonwealth of Pennsylvania under the direction of Anthony G. Reese, Director.

IN TESTIMONY WHEREOF: I have hereunto set my hand and caused the seal of the said Department to be affixed at Harrisburg, Pennsylvania this fourteenth day of November A. D., one thousand nine hundred and sixty-three.



GENEVIEVE BLATT
Secretary of Internal Affairs

By: William C. Seyler
William C. Seyler, Deputy Secretary