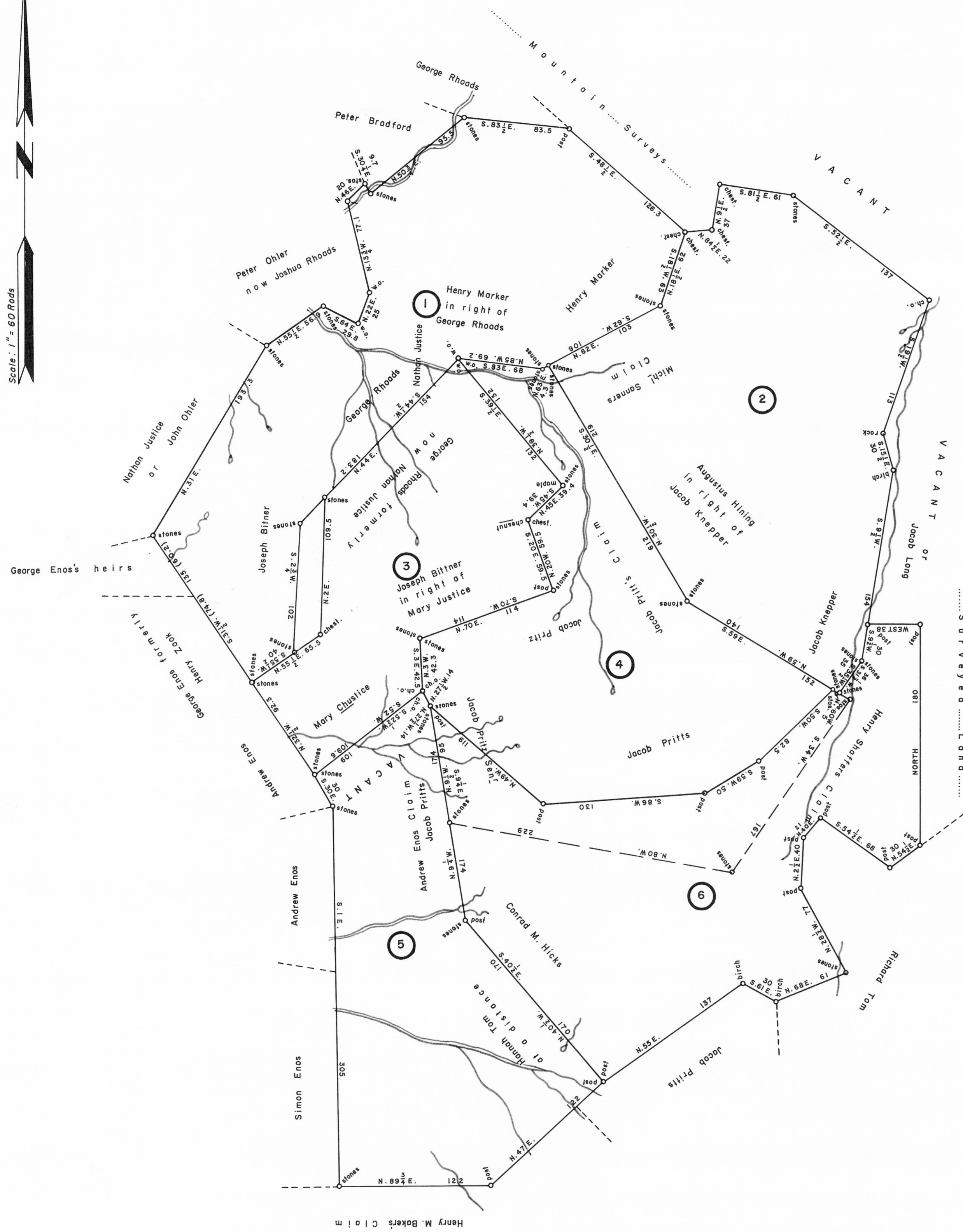


Scale: 1" = 60 Rods



①  
C—180—136  
GEORGE RHOADS  
396 ACRES & Allowance  
WARRANT DEC. 20, 1811  
SURVEY (No Survey Date Given)  
PATENT MAR. 27, 1832  
To—GEORGE RHOADS  
H—31—114

②  
C—122—116  
JACOB KNEPPER  
400 ACRES & Allowance  
WARRANT MAR. 4, 1839  
SURVEY NOV. 12-13, 1840  
PATENT MAY 13, 1841  
To—Benjamin Knepper  
H—43—475

③  
C—105—121  
MARY JUSTICE  
227 ACRES—40 PERCHES & Allowance  
WARRANT JAN. 13, 1841  
SURVEY JUL. 7, 1841  
PATENT MAR. 15, 1842  
To—MARY JUSTICE  
H—44—26

④  
C—167—202  
JACOB PRITZ SR.  
400 ACRES & Allowance  
WARRANT AUG. 10, 1854  
SURVEY JAN. 3, 1855  
PATENT AUG. 9, 1856  
To—JACOB PRITZ SR.  
H—53—175

⑤  
C—63—79  
ANDREW ENOS  
300 ACRES & Allowance  
WARRANT AUG. 30, 1856  
SURVEY SEPT. 8, 1856  
PATENT NOV. 3, 1856  
To—ANDREW ENOS  
H—53—238

⑥  
C—216—256  
SUSANNA TOM  
400 ACRES & Allowance  
WARRANT FEB. 5, 1794  
SURVEY OCT. 12, 1855  
PATENT MAY 13, 1856  
To—Conrad M. Hicks  
H—53—114

**A CONNECTED DRAFT:** of six (6) tracts of land, which when surveyed, were situate as follows: on the waters of Casselman River, five (5) in Milford Township, Somerset County; and one (1) in Elk Lick, Milford and Summit Townships, Bedford (now Somerset) County. The draft has been constructed from and compared with original drafts on file in the Bureau of Land Records, Department of Community Affairs, Commonwealth of Pennsylvania, under the direction of Edward D. Price, Director.

**IN TESTIMONY WHEREOF:** I have hereunto set my hand and caused the seal of the said Department to be affixed at Harrisburg, Pennsylvania, this twentieth day of July A. D., one thousand nine hundred seventy eight.



A. L. HYDEMAN, JR.  
Secretary of Community Affairs

By: James G. Shultz  
JAMES G. SHULTZ, Executive Deputy Secretary

1692

jm Wms.

56.4