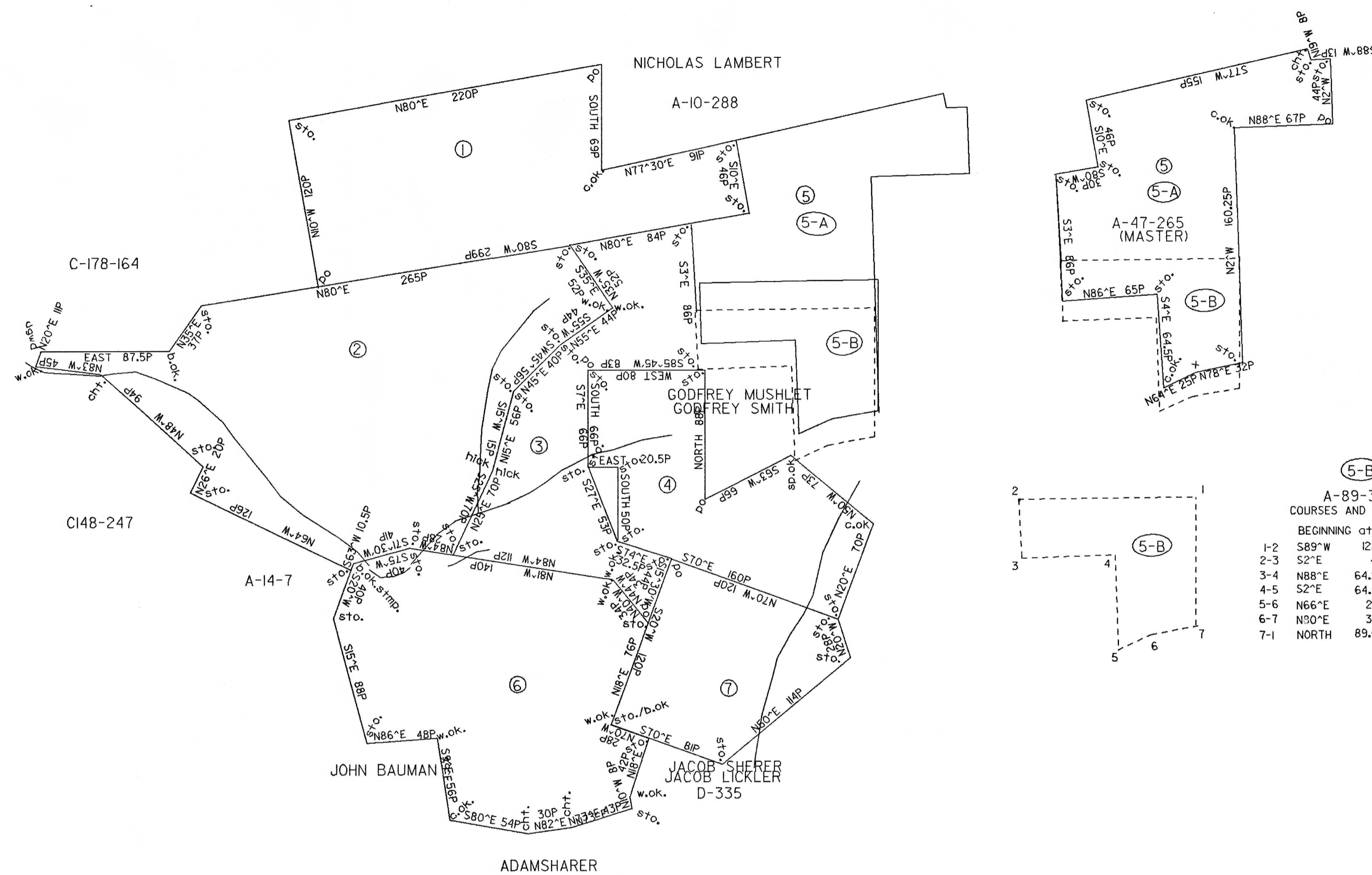


S C A L E : 1"=60 Rods



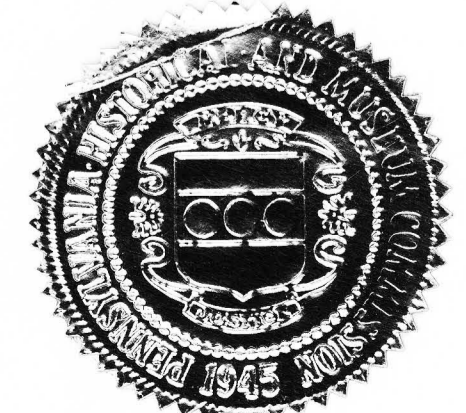
(5-B)
A-89-356
COURSES AND DISTANCES:
BEGINNING at a point:
1-2 S89°W 122 PS to a point;
2-3 S2°E 41 PS to a point;
3-4 N88°E 64.2 PS to a point;
4-5 S2°E 64.5 PS to a point;
5-6 N66°E 25 PS to a point;
6-7 N90°E 32 PS to a point;
7-1 NORTH 89.6 PS to the BEGINNING.

- ①
C -3 -52
YOST DRIESBACH
162 AS.-120PS.& ALLOW.
WARRANT MAY 19,1790
SURVEY SEPT.11,1797
PATENT JULY 15,1842
TO-NATHAN BEECH
H -44 -243
- ②
A -77 -244
PETER FRANCE
276 3/4AS.-0 PS.& ALLOW.
WARRANT MAR. 2,1786
SURVEY APR. 27, 1791
PATENT DEC. 6,1794
TO-FREDERICK SCHACKLER
P -23 -64
"FRANKFORD"
- ③
A -18 -125
HENRY BLOSS
103 3/4AS.-0 PS.& ALLOW.
WARRANT JAN.20,1786
SURVEY APR. 29,1791
PATENT MAY 7,1870
TO CHARLES BELFORD, et.al.
H -66 -161
- ④
A -89 -355
BENEDICT SNEIDER
102 AS-69 PS.& ALLOW.
WARRANT JUNE 8,1773
SURVEY JUNE 14,1773
PATENT FEB. 2,1775
TO-BENEDICT SCHNEIDER
AA -15 -558
"PEKING"
- ⑤
A -47 -265
FREDERICK SHECKLER
1311/4AS.-0 PS.& ALLOW.
WARRANT APR.29,1794
SURVEY JUNE 20,1796
PATENT (PATENTED AS FOLLOWS)
- (5-A)
A -89 -356
46 AS.-144 PS.& ALLOW.
RE-SURVEY MARCH 14,1842
PATENT JUNE 27,1842
TO-WILLIAM KERN
H -44 -214
- (5-B)
D -38 -22
64 AS.-99 PS.& ALLOW.
RE-SURVEY NOV. 24,1874
PATENT JAN. 27,1875
TO-THOMAS BECK
&
SOLOMON BOYER
H -73 -172
- ⑥
B -7 -186
ABRAHAM SEWITZ
180 AS.-90 PS.& ALLOW.
WARRANT FEB. 7,1786
SURVEY MAY 24,1870
PATENT JULY 19,1870
TO-HENRY REMELY
H -67 -698
- ⑦
O -89
PETER BLOSE
79 AS.-150PS.& ALLOW.
WARRANT FEB.7,1776
SURVEY JUNE 11,1777
PATENT MAR.9,1835
TO-JOHN D. BAUMAN
H -37 -30

A CONNECTED DRAFT: of seven (7) tracts of land, which when surveyed, were situate in Towamensing Township, Northampton, now Carbon, County. The draft has been constructed from and compared with the official returns on file in the Land Office Section, Division of Archives and Manuscripts, Bureau of Archives and History, Historical and Museum Commission, under the direction of Dr. Robert M. Dructor, Chief, Division of Archives and Manuscripts.

IN TESTIMONY WHEREOF; I have hereunto set my hand and caused the seal of the said Commission to be affixed at Harrisburg, Pennsylvania, this tenth day of September, A.D., one thousand nine hundred and ninety.

BRENT D. GLASS, Executive Director
Historical and Museum Commission



By: *Harry E. Whipkey*
Harry E. Whipkey, Director
Bureau of Archives and History