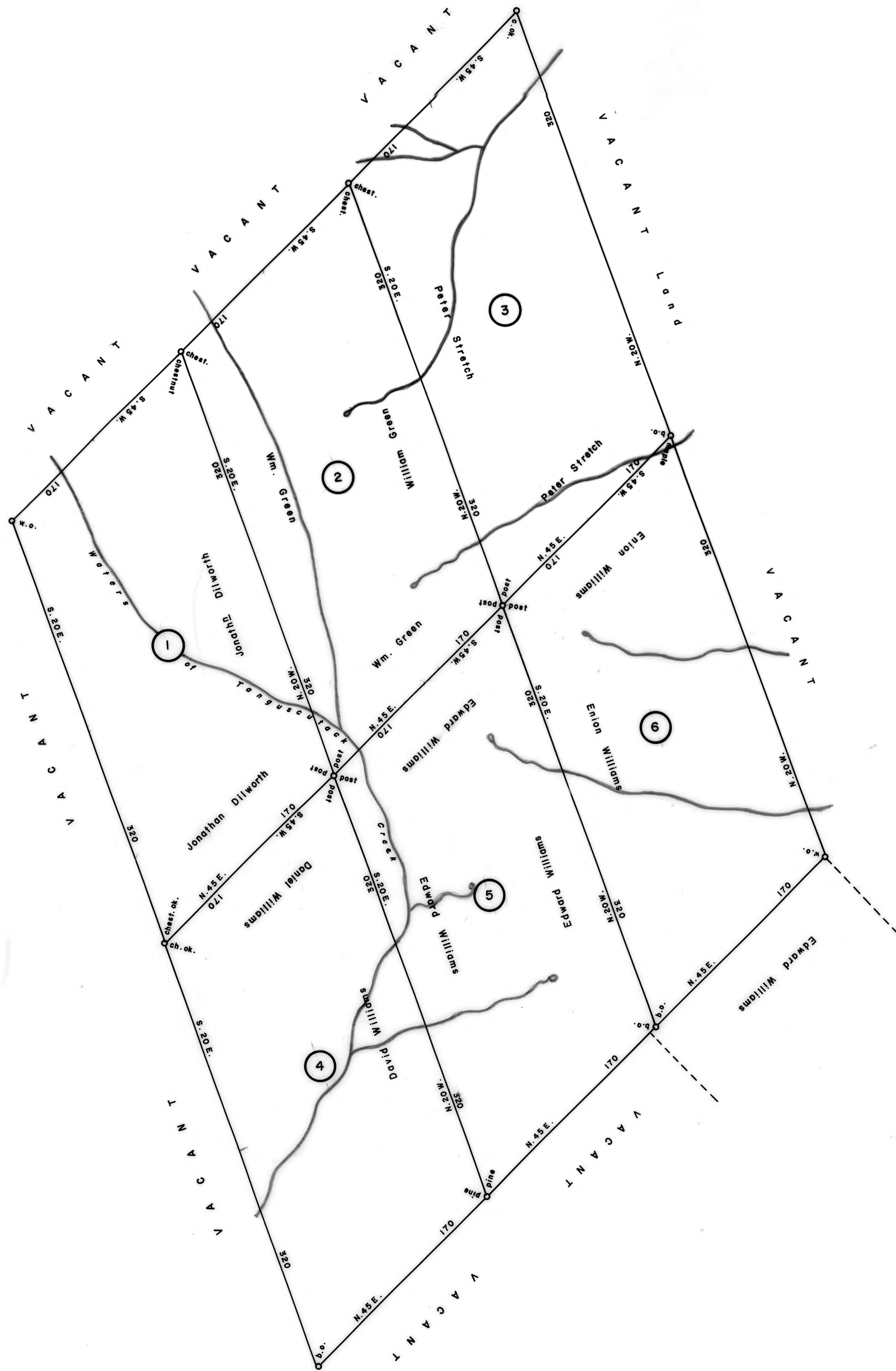


Scale: 1" = 60 Rods



①  
 C — 56 — 56  
 JONATHAN DILWORTH  
 306 ACRES—80 PERCHES & Allow  
 WARRANT JAN. 4, 1774  
 SURVEY NOV. 18, 1790  
 PATENT OCT. 21, 1847  
 To—Edward Yarnall & Charles Yarnall  
 H — 46 — 288

②  
 C — 69 — 57  
 WILLIAM GREEN  
 306 ACRES—80 PERCHES & Allow  
 WARRANT JAN. 4, 1774  
 SURVEY NOV. 18, 1790  
 PATENT OCT. 20, 1847  
 To—Edward Yarnall & Charles Yarnall  
 H — 46 — 282

③  
 C — 229 — 25  
 PETER STRETCH  
 306 ACRES—80 PERCHES & Allow  
 WARRANT JAN. 4, 1774  
 SURVEY NOV. 19, 1790  
 PATENT OCT. 20, 1847  
 To—Edward Yarnall & Charles Yarnall  
 H — 46 — 281

④  
 A — 48 — 77  
 DANIEL WILLIAMS  
 306 ACRES—80 PERCHES & Allow  
 WARRANT NOV. 19, 1772  
 SURVEY NOV. 19, 1790  
 PATENT OCT. 21, 1847  
 To—Edward Yarnall & Charles Yarnall  
 H — 46 — 286

⑤  
 A — 48 — 76  
 EDWARD WILLIAMS  
 306 ACRES—80 PERCHES & Allow  
 WARRANT NOV. 19, 1772  
 SURVEY NOV. 20, 1790  
 PATENT OCT. 31, 1847  
 To—Edward Yarnall & Charles Yarnall  
 H — 46 — 289

⑥  
 A — 48 — 65  
 ENION WILLIAMS  
 306 ACRES—80 PERCHES & Allow  
 WARRANT NOV. 19, 1772  
 SURVEY NOV. 20, 1790  
 PATENT OCT. 21, 1847  
 To—Edward Yarnall & Charles Yarnall  
 H — 46 — 288

**A CONNECTED DRAFT** of six (6) tracts of land, which when surveyed, were situate in Bald Eagle Township, Northumberland (now Clinton) County. The draft has been constructed from and compared with original drafts on file in the Bureau of Land Records, Department of Community Affairs, Commonwealth of Pennsylvania, under the direction of Edward D. Price, Director.

**IN TESTIMONY WHEREOF**: I have hereunto set my hand and caused the seal of the said Department to be affixed at Harrisburg, Pennsylvania, this ninth day of June A. D., one thousand nine hundred and eighty.



SHIRLEY M. DENNIS  
 Secretary of Community Affairs

By: *Shirley M. Dennis*  
 SHIRLEY M. DENNIS, Secretary of Community Affairs