

Page No. 1
Supervisor's Dist: No.
Enumeration Dist: No.

NOTE A.—The light dotted perpendicular lines, which divide the spaces intended for numbers on this Schedule, are intended to separate the units, tens, &c., from each other, and the Enumerator should be careful that the figures are written within the small spaces so formed, thus: 741, the units in the right-hand small spaces.
NOTE B.—Make an affirmative entry by a slanting line (thus /) in one of the three columns 2, 3, and 4, according as the fact is in the case of each farm—in column 2, if the occupier is the owner of the farm; in column 3, if he is the tenant at a fixed money rental; in column 4, if he conducts it for a share of the product.
NOTE C.—Enumerators will observe that there are 100 questions relating to each farm, which are arranged in four successive divisions of each schedule page.

SCHEDULE 2.—Productions of Agriculture in Manheim in the County of York, State of Pa. enumerated by me on the 1st day of June, 1880. H. C. Kline, Enumerator.

Table with columns: Hay, Clover Seed, Grass Seed, Horses, Mules and Asses. Rows 1-10.

Main table with columns: THE NAME, TENURE, ACRES OF LAND (IMPROVED, UNIMPROVED), FARM VALUES, FENCES, LABOR, GRASS LANDS. Rows 1-10.

Table with columns: Poultry on hand June 1, 1880, Eggs produced in 1879. Rows 1-10.

Table with columns: CATTLE AND THEIR PRODUCTS, MOVEMENT, 1879, SHEEP, MOVEMENT, 1879, SWINE, MOVEMENT, 1879. Rows 1-10.

Table with columns: MAPLE-1879, BROOM CORN, 1879. Rows 1-10.

Table with columns: CEREALS, PULSE, FIBER, SUGAR. Rows 1-10.

Table with columns: BEES-1879, FOREST PRODUCTS. Rows 1-10.

Table with columns: HOPS, POTATOES, TOBACCO, ORCHARDS-1879, NURSERY, VINEYARDS, MARKET GARDENS, BEES-1879, FOREST PRODUCTS. Rows 1-10.

Page No. 2
Supervisor's Dist: No. 7
Enumeration Dist: No. 15

NOTE A.—The light dotted perpendicular lines, which divide the spaces intended for numbers on this Schedule, are intended to separate the units, tens, &c., from each other, and the Enumerator should be careful that the figures are written within the small spaces so formed, thus: 74, the units in the right-hand small spaces.
NOTE B.—Make an affirmative entry by a slanting line (thus /) in one of the three columns 2, 3, and 4, according as the fact is in the case of each farm—in column 2, if the occupier is the owner of the farm; in column 3, if he is the tenant at a fixed money rental; in column 4, if he conducts it for a share of the product.
NOTE C.—Enumerators will observe that there are 100 questions relating to each farm, which are arranged in four successive divisions of each schedule page.

Page No. 3
Supervisor's Dist: No. 7
Enumeration Dist: No. 15

SCHEDULE 2.—Productions of Agriculture in North Township in the County of York, State of Penn., enumerated by me on the 1st day of June, 1880. M. Kling, Enumerator.

Main agricultural schedule table with columns for farm details, land, values, labor, grass lands, and various products like cattle, sheep, swine, cereals, and orchards.

Continuation of the agricultural schedule table on the right page, including columns for farm details and various products.

Page No. 3
Supervisor's Dist. No. 7
Enumeration Dist. No. 15

NOTE A.—The light dotted perpendicular lines, which divide the spaces intended for numbers on this Schedule, are intended to separate the units, tens, &c., from each other, and the Enumerator should be careful that the figures are written within the small spaces so formed, thus:

7	4	1
4	2	1
3	9	

NOTE B.—Make an affirmative entry by a slanting line (thus /) in one of the three columns 2, 3, and 4, according as the fact is in the case of each farm—in column 2, if the occupier is the owner of the farm; in column 3, if he is the tenant at a fixed money rental; in column 4, if he conducts it for a share of the product.

NOTE C.—Enumerators will observe that there are 100 questions relating to each farm, which are arranged in four successive divisions of each schedule page.

SCHEDULE 2.—Productions of Agriculture in *Northwest Township* in the County of *York*, State of *Penn.*
enumerated by me on the *28th* day of June, 1880. *U. C. King* Enumerator.

Table with columns: THE NAME, TENURE, ACRES OF LAND (Improved, Unimproved), FARM VALUES, FENCES, LABOR, GRASS LANDS. Includes farm names like 'Edwards' and 'Hess'.

NEAT CATTLE AND THEIR PRODUCTS. SHEEP. SWINE. POULTRY ON HAND JUNE 1ST, 1880. Includes columns for movement, on hand, and production.

CEREALS. PULSE. FIBER. SUGAR. Includes columns for various crops like wheat, corn, and sugar.

FOREST PRODUCTS. HOPS. POTATOES. TOBACCO. ORCHARDS. PEACH. NURSERIES. VINEYARDS. MARKET GARDENS. BEES. Includes columns for various agricultural products.

Vertical table on the left margin with columns: HARVESTED IN 1879, POULTRY ON HAND JUNE 1ST, 1880, EGGS PRODUCED IN 1879, BROOM CORN, FOREST PRODUCTS.

D.

Page No. 4
Supervisor's Dist. No. 7
Enumeration Dist. No. 15

NOTE A.—The light dotted perpendicular lines, which divide the spaces intended for numbers on this Schedule, are intended to separate the units, tens, &c., from each other, and the Enumerator should be careful that the figures are written within the small spaces so formed, thus: 74, the units in the right-hand small spaces.

NOTE B.—Make an affirmative entry by a slanting line (thus /) in one of the three columns 2, 3, and 4, according as the fact is in the case of each farm—in column 2, if the occupier is the owner of the farm; in column 3, if he is the tenant at a fixed money rental; in column 4, if he conducts it for a share of the product.

NOTE C.—Enumerators will observe that there are 100 questions relating to each farm, which are arranged in four successive divisions of each schedule page.

SCHEDULE 2.—Productions of Agriculture in Manheim Township in the County of York, State of Penn.
enumerated by me on the 8th day of June, 1880. W. C. King Enumerator.

Page No. 5
Supervisor's Dist. No. 7
Enumeration Dist. No. 15

SCHEDULE 2.—P

Main agricultural schedule table with columns for Farm Name, Acres of Land (Improved/Unimproved), Farm Values, Fences, Labor, Grass Lands, Neat Cattle and Their Products, Sheep, Swine, Poultry, Cereals, Pulse, Fiber, Sugar, Broom Corn, Hops, Potatoes, Tobacco, Orchards, Nurseries, Vineyards, Market Gardens, Bees, Forest Products.

Continuation of the agricultural schedule table on the right page, including columns for Farm Name, Acres of Land, Farm Values, Fences, Labor, Grass Lands, Neat Cattle and Their Products, Sheep, Swine, Poultry, Cereals, Pulse, Fiber, Sugar, Broom Corn, Hops, Potatoes, Tobacco, Orchards, Nurseries, Vineyards, Market Gardens, Bees, Forest Products.

B.

Page No. 6
Supervisor's Dist. No.
Enumeration Dist. No.

NOTE A.—The light dotted perpendicular lines, which divide the spaces intended for numbers on this Schedule, are intended to separate the units, tens, &c., from each other, and the Enumerator should be careful that the figures are written within the small spaces so formed, thus:

7	4
4	2
3	9

NOTE B.—Make an affirmative entry by a slanting line (thus /) in one of the three columns 2, 3, and 4, according as the fact is in the case of each farm—in column 2, if the occupier is the owner of the farm; in column 3, if he is the tenant at a fixed money rental; in column 4, if he conducts it for a share of the product.

NOTE C.—Enumerators will observe that there are 100 questions relating to each farm, which are arranged in four successive divisions of each schedule page.

SCHEDULE 2.—Productions of Agriculture in Franklin Township in the County of York, State of NY, enumerated by me on the 29th day of June, 1880. W. C. King Enumerator.

Page No. 7
Supervisor's Dist. No.
Enumeration Dist. No.

SCHEDULE 2.—Productions of Agriculture in Franklin Township in the County of York, State of NY, enumerated by me on the 29th day of June, 1880. W. C. King Enumerator.

Main agricultural schedule table with columns for farm name, land, values, labor, grass lands, and various agricultural products like cattle, sheep, cereals, etc.

Continuation of the agricultural schedule table on the adjacent page, including sections for NEAT CATTLE, SHEEP, SWINE, and various crops.

Page No. 7
Supervisor's Dist. No.
Enumeration Dist. No.

NOTE A.—The light dotted perpendicular lines, which divide the spaces intended for numbers on this Schedule, are intended to separate the units, tens, &c., from each other, and the Enumerator should be careful that the figures are written within the small spaces so formed, thus:

7	4
4	2
3	9

 the units in the right-hand small spaces.

NOTE B.—Make an affirmative entry by a slanting line (thus /) in one of the three columns 2, 3, and 4, according as the fact is in the case of each farm—in column 2, if the occupier is the owner of the farm; in column 3, if he is the tenant at a fixed money rental; in column 4, if he conducts it for a share of the product.

NOTE C.—Enumerators will observe that there are 100 questions relating to each farm, which are arranged in four successive divisions of each schedule page.

SCHEDULE 2.—Productions of Agriculture in Franklin York in the County of York, State of Pa. enumerated by me on the 4th day of June, 1880. A. C. Kelling Enumerator.

Table with columns for 'HARVESTED IN 1879', 'Clover Seed', 'Grass Seed', 'Horses of all ages on hand June 1, 1880', 'Mules and Asses, all ages, on hand June 1, 1880'. Rows 1-10.

Table with columns: 'OF THE PERSON WHO CONDUCTS THIS FARM', 'ACRES OF LAND', 'FARM VALUES', 'FENCES', 'LABOR', 'GRASS LANDS'. Rows 1-10.

Table with columns: 'POULTRY ON HAND JUNE 1ST, 1880, EXCLUSIVE OF SPRING HATCHING', 'Barn-yard', 'Other', 'Eggs produced in 1879'. Rows 1-10.

Table with columns: 'NEAT CATTLE AND THEIR PRODUCTS', 'MOVEMENT, 1879', 'SHEEP', 'MOVEMENT, 1879', 'SWINE', 'POULTRY ON HAND JUNE 1ST, 1880, EXCLUSIVE OF SPRING HATCHING'. Rows 1-10.

Table with columns: 'MAPLE—1879', 'BROOM CORN—1879', 'Molasses', 'Galls', 'Acres', 'Lbs.'. Rows 1-10.

Table with columns: 'CEREALS', 'PULSE', 'FIBER', 'SUGAR', 'BROOM CORN'. Rows 1-10.

Table with columns: 'FOREST PRODUCTS', 'Wax', 'Amount of wood cut in 1879', 'Value of all forest products sold or consumed in 1879'. Rows 1-10.

Table with columns: 'ORCHARDS—1879', 'NURSERIES', 'VINEYARDS', 'MARKET GARDENS', 'BEES—1879', 'FOREST PRODUCTS'. Rows 1-10.

Page No. 8
Supervisor's Dist: No. 7
Enumeration Dist: No. 15

NOTE A.—The light dotted perpendicular lines, which divide the spaces intended for numbers on this Schedule, are intended to separate the units, tens, &c. from each other, and the Enumerator should be careful that the figures are written within the small spaces so formed, thus: 74, the units in the right-hand small spaces.

NOTE B.—Make an affirmative entry by a slanting line (thus /) in one of the three columns 2, 3, and 4, according as the fact is in the case of each farm—in column 2, if the occupier is the owner of the farm; in column 3, if he is the tenant at a fixed money rental; in column 4, if he conducts it for a share of the product.

NOTE C.—Enumerators will observe that there are 100 questions relating to each farm, which are arranged in four successive divisions of each schedule page.

SCHEDULE 2.—Productions of Agriculture in Manheim Township in the County of York, State of Pa
enumerated by me on the 15 day of June, 1880. M. King Enumerator.

Table with columns: OF THE PERSON WHO CONDUCTS THIS FARM, ACRES OF LAND, FARM VALUES, FENCES, LABOR, GRASS LANDS. Includes farm names like Bandert David, Gosler Simon, Kerickner Charles, etc.

NEAT CATTLE AND THEIR PRODUCTS, SHEEP, SWINE. Includes sub-sections for ON HAND JUNE 1, 1880, MOVEMENT, 1879, and various production metrics.

CEREALS, PULSE, FIBER, SUGAR, BROOM CORN. Includes sub-sections for BARLEY, BUCKWHEAT, INDIAN CORN, OATS, RYE, WHEAT, etc.

HOPS, POTATOES, TOBACCO, ORCHARDS—1879, NURSERIES, VINEYARDS, MARKET GARDENS, BEES—1879, FOREST PRODUCTS. Includes sub-sections for APPLE, PEACH, and various agricultural products.

Page No. 9
Supervisor's Dist: No. 7
Enumeration Dist: No. 15

SCHEDULE 2.—Pr

Table with columns: OF THE PERSON WHO CONDU, THE NAME. Includes farm names like Miller Levi, Miller Jacob, Dubs Levi, etc.

Page No. 9

Supervisor's Dist. No. 7

Enumeration Dist. No. 15

NOTE A.—The light dotted perpendicular lines, which divide the spaces intended for numbers on this Schedule, are intended to separate the units, tens, &c., from each other, and the Enumerator should be careful that the figures are written within the small spaces so formed, thus: 74, the units in the right-hand small spaces.

NOTE B.—Make an affirmative entry by a slanting line (thus /) in one of the three columns 2, 3, and 4, according as the fact is in the case of each farm—in column 2, if the occupier is the owner of the farm; in column 3, if he is the tenant at a fixed money rental; in column 4, if he conducts it for a share of the product.

NOTE C.—Enumerators will observe that there are 100 questions relating to each farm, which are arranged in four successive divisions of each schedule page.

SCHEDULE 2.—Productions of Agriculture in Franklin Township the County of York, State of Pa. enumerated by me on the 4th day of June, 1880. J. C. King, Enumerator.

Table with columns: Grass Lands, Hay, Clover Seed, Grass Seed, Horses of all ages on hand June 1, 1880, Mules and Asses of all ages on hand June 1, 1880. Rows 1-10.

Table with columns: On hand June 1, 1880, Eggs produced in 1879, Poultry on hand June 1st, 1880, exclusive of spring hatching. Rows 1-10.

Table with columns: Sugar, Molasses, Broom Corn, 1879. Rows 1-10.

Table with columns: Hops, Potatoes (Irish), Potatoes (Sweet), Tobacco, Apples, Peaches, Nurseries, Vineyards, Market Gardens, Bees, Forest Products. Rows 1-10.

Table of THE PERSON WHO CONDUCTS THIS FARM. Columns: THE NAME, TENURE, IMPROVED, UNIMPROVED, FARM VALUES, FENCES, LABOR, GRASS LANDS, HORSES AND MULES AND ASSES. Rows 1-10.

Table of NEAT CATTLE AND THEIR PRODUCTS. Columns: MOVEMENT, 1879, ON HAND JUNE 1, 1880, MOVEMENT, 1879, SHEEP, SWINE, POULTRY ON HAND JUNE 1ST, 1880, EGGS PRODUCED IN 1879. Rows 1-10.

Table of CEREALS, PULSE, FIBER, SUGAR, BROOM CORN. Columns: BARLEY, BUCKWHEAT, INDIAN CORN, OATS, RYE, WHEAT, PULSE, FIBER, SUGAR, BROOM CORN. Rows 1-10.

Table of HOPS, POTATOES, TOBACCO, APPLES, PEACHES, NURSERIES, VINEYARDS, MARKET GARDENS, BEES, FOREST PRODUCTS. Columns: HOPS, POTATOES, TOBACCO, APPLES, PEACHES, NURSERIES, VINEYARDS, MARKET GARDENS, BEES, FOREST PRODUCTS. Rows 1-10.

Page No. 10
Supervisor's Dist. No. 15
Enumeration Dist. No. 7

NOTE A.—The light dotted perpendicular lines, which divide the spaces intended for numbers on this Schedule, are intended to separate the units, tens, &c., from each other, and the Enumerator should be careful that the figures are written within the small spaces so formed, thus: 741, the units in the right-hand small spaces.

NOTE B.—Make an affirmative entry by a slanting line (thus /) in one of the three columns 2, 3, and 4, according as the fact is in the case of each farm—in column 2, if the occupier is the owner of the farm; in column 3, if he is the tenant at a fixed money rental; in column 4, if he conducts it for a share of the product.

NOTE C.—Enumerators will observe that there are 100 questions relating to each farm, which are arranged in four successive divisions of each schedule page.

SCHEDULE 2.—Productions of Agriculture in March in the County of York, State of New York, enumerated by me on the 11th day of June, 1880. W. C. King, Enumerator.

Page No. 11
Supervisor's Dist. No. 7
Enumeration Dist. No. 15

SCHEDULE 2.—Pro

Table with columns: OF THE PERSON WHO CONDUCTS THIS FARM, ACRES OF LAND, FARM VALUES, FENCES, LABOR, GRASS LANDS. Includes farm names like Geiman Samuel, Ryschman John C., Walker Ephraim, etc.

Table with columns: NEAT CATTLE AND THEIR PRODUCTS, MOVEMENT, 1879, SHEEP, MOVEMENT, 1879, SWINE, PAULTRY ON HAND. Includes sub-sections for Cattle of all ages, Sheep and lambs, etc.

Table with columns: CEREALS, PULSK, FIBER, SUGAR, BROOM CORN. Includes sub-sections for BARLEY, BUCKWHEAT, INDIAN CORN, OATS, RYE, WHEAT, etc.

Table with columns: HOPS, POTATOES, TOBACCO, ORCHARDS-1879, NURSERIES, VINEYARDS, MARKET GARDENS, BEES-1879, FOREST PRODUCTS. Includes sub-sections for Apples, Peaches, Grapes, etc.

Table with columns: OF THE PERSON WHO CONDUCTS THIS FARM, THE NAME. Includes names like Ryschman John C., Dubbs Jacob, etc.

Table with columns: NEAT CATTLE AND THEIR PRODUCTS, MOVEMENT, 1879, SWINE, PAULTRY ON HAND. Includes sub-sections for Cattle of all ages, Sheep and lambs, etc.

Table with columns: CEREALS, PULSK, FIBER, SUGAR, BROOM CORN. Includes sub-sections for BARLEY, BUCKWHEAT, INDIAN CORN, OATS, RYE, WHEAT, etc.

Table with columns: HOPS, POTATOES, TOBACCO, ORCHARDS-1879, NURSERIES, VINEYARDS, MARKET GARDENS, BEES-1879, FOREST PRODUCTS. Includes sub-sections for Apples, Peaches, Grapes, etc.

separate the units, tens, &c., med, thus: 741, the units 421, the tens 39

Page No. 11 Supervisor's Dist: No. 7 Enumeration Dist: No. 15

NOTE A.—The light dotted perpendicular lines, which divide the spaces intended for numbers on this Schedule, are intended to separate the units, tens, &c., from each other, and the Enumerator should be careful that the figures are written within the small spaces so formed, thus: 741, the units 421, the tens 39

SCHEDULE 2.—Productions of Agriculture in ... in the County of ... State of ... enumerated by me on the ... day of June, 1880.

Table with columns for Clover Seed, Grass Seed, Horses, Mules and Asses, etc.

Main table with columns: THE NAME, TENURE, ACRES OF LAND (IMPROVED, UNIMPROVED), FARM VALUES, FENCES, LABOR, GRASS LANDS, etc.

Table with columns: Poultry on hand, Eggs produced, etc.

Table with columns: NEAT CATTLE AND THEIR PRODUCTS, MOVEMENT, 1879, SHEEP, MOVEMENT, 1879, SWINE, POULTRY ON HAND, etc.

Table with columns: MAPLE-1879, BROOM CORN, etc.

Table with columns: CEREALS, PULSE, FIBER, SUGAR, etc.

Table with columns: FOREST PRODUCTS, etc.

Table with columns: ORCHARDS-1879, NURSERIES, VINEYARDS, MARKET GARDENS, BEES-1879, FOREST PRODUCTS, etc.

Page No. 12
Supervisor's Dist: No. 7
Enumeration Dist: No. 15

NOTE A.—The light dotted perpendicular lines, which divide the spaces intended for numbers on this Schedule, are intended to separate the units, tens, &c., from each other, and the Enumerator should be careful that the figures are written within the small spaces so formed, thus: 741, the units in the right-hand small spaces.

NOTE B.—Make an affirmative entry by a slanting line (thus /) in one of the three columns 2, 3, and 4, according as the fact is in the case of each farm—in column 2, if the occupier is the owner of the farm; in column 3, if he is the tenant at a fixed money rental; in column 4, if he conducts it for a share of the product.

NOTE C.—Enumerators will observe that there are 100 questions relating to each farm, which are arranged in four successive divisions of each schedule page.

SCHEDULE 2.—Productions of Agriculture in *Manheim Township* in the County of *York*, State of *Pa.*, enumerated by me on the *8th* day of June, 1880. *W.C. Kling* Enumerator.

Page No. 13
Supervisor's Dist: No. 7
Enumeration Dist: No. 15

SCHEDULE 2.—Pro

Table with columns: OF THE PERSON WHO CONDUCTS THIS FARM, ACRES OF LAND, FARM VALUES, FENCES, LABOR, GRASS LANDS. Includes farm names like Post Frederic, Smith, and Miller.

Table with columns: NEAT CATTLE AND THEIR PRODUCTS, SHEEP, SWINE, POULTRY ON HAND. Includes sub-sections for Cattle, Sheep and lambs, and Swine.

Table with columns: CEREALS, PULSE, FIBER, SUGAR, BROOD CORN. Includes sub-sections for Barley, Buckwheat, Indian Corn, Oats, Rye, Wheat, Flax, Sorghum, and Maple.

Table with columns: HOPS, POTATOES, TOBACCO, ORCHARDS-1879, NURSERIES, VINEYARDS, MARKET GARDENS, BEES-1879, FOREST PRODUCTS. Includes sub-sections for Apples, Peaches, and various agricultural products.

Table with columns: OF THE PERSON WHO CONDUCTS THIS FARM, THE NAME. Includes names like Messersmith, Albright, and Smith.

Table with columns: NEAT CATTLE AND THEIR PRODUCTS, SHEEP, SWINE, POULTRY ON HAND. Includes sub-sections for Cattle, Sheep and lambs, and Swine.

Table with columns: CEREALS, PULSE, FIBER, SUGAR, BROOD CORN. Includes sub-sections for Barley, Buckwheat, Indian Corn, Oats, Rye, Wheat, Flax, Sorghum, and Maple.

Table with columns: HOPS, POTATOES, TOBACCO, ORCHARDS-1879, NURSERIES, VINEYARDS, MARKET GARDENS, BEES-1879, FOREST PRODUCTS. Includes sub-sections for Apples, Peaches, and various agricultural products.

Page No. 13
Supervisor's Dist. No.
Enumeration Dist. No.

NOTE A.—The light dotted perpendicular lines, which divide the spaces intended for numbers on this Schedule, are intended to separate the units, tens, &c., from each other, and the Enumerator should be careful that the figures are written within the small spaces so formed, thus:

7	4
4	2
3	9

 the units in the right-hand small spaces.
NOTE B.—Make an affirmative entry by a slanting line (thus /) in one of the three columns 2, 3, and 4, according as the fact is in the case of each farm—in column 2, if the occupier is the owner of the farm; in column 3, if he is the tenant at a fixed money rental; in column 4, if he conducts it for a share of the product.
NOTE C.—Enumerators will observe that there are 100 questions relating to each farm, which are arranged in four successive divisions of each schedule page.

SCHEDULE 2.—Productions of Agriculture in Monkton in the County of York, State of Penn
enumerated by me on the 6th day of June, 1880. D. C. King Enumerator.

to separate the units, tens, &c., formed, thus:

7	4
4	2
3	9

 is in the case of each farm—in column 4, if he conducts it for divisions of each schedule page.

LANDS. PRODUCTS HARVESTED IN 1879. Table with columns for Hay, Clover Seed, Grass Seed, Horses, Mules, etc.

Table with columns: OF THE PERSON WHO CONDUCTS THIS FARM, ACRES OF LAND, FARM VALUES, FENCES, LABOR, GRASS LANDS. Includes farm names like 'John', 'John', 'John'.

SWINE. POULTRY ON HAND JUNE 1ST, 1880, EXCLUSIVE OF SPRING HATCHING. Table with columns for No., Eggs produced, etc.

NEAT CATTLE AND THEIR PRODUCTS. MOVEMENT, 1879. Table with columns for Cattle of all ages, Milk, Butter, Cheese, etc.

MAPLE—1879. BROOM CORN. 1879. Table with columns for Sugar, Molasses, etc.

CEREALS. Table with columns for BARLEY, BUCKWHEAT, INDIAN CORN, OATS, RYE, WHEAT, etc.

BEES—1879. FOREST PRODUCTS. Table with columns for Honey, Wax, etc.

ORCHARDS—1879. Table with columns for HOPS, POTATOES, TOBACCO, APPLE, PEACH, etc.

Page No. 144
Supervisor's Dist: No. 7
Enumeration Dist: No. 15

NOTE A.—The light dotted perpendicular lines, which divide the spaces intended for numbers on this Schedule, are intended to separate the units, tens, &c., from each other, and the Enumerator should be careful that the figures are written within the small spaces so formed, thus:

7	4	1
4	2	1
3	9	1

NOTE B.—Make an affirmative entry by a slanting line (thus /) in one of the three columns 2, 3, and 4, according as the fact is in the case of each farm—in column 2, if the occupier is the owner of the farm; in column 3, if he is the tenant at a fixed money rental; in column 4, if he conducts it for a share of the product.

NOTE C.—Enumerators will observe that there are 100 questions relating to each farm, which are arranged in four successive divisions of each schedule page.

SCHEDULE 2.—Productions of Agriculture in Westchester in the County of York, State of New York, enumerated by me on the 15th day of June, 1880. J. C. King Enumerator.

Table with columns: THE NAME, TENURE, ACRES OF LAND (IMPROVED, UNIMPROVED), FARM VALUES, FENCES, LABOR, GRASS LANDS. Rows 1-10 listing farms like 'Warburgh Samuel M.', 'Hoye, Heinrich Jacob', etc.

Table with columns: NEAT CATTLE AND THEIR PRODUCTS, MOVEMENT, 1879, SHEEP, MOVEMENT, 1879, SWINE, POULTRY ON HAND. Rows 1-10 detailing livestock movements and production.

Table with columns: CEREALS, PULSE, FIBER, SUGAR, BARLEY, BUCKWHEAT, INDIAN CORN, OATS, RYE, WHEAT, etc. Rows 1-10 detailing crop production.

Table with columns: HOPS, POTATOES, TOBACCO, ORCHARDS-1879, NURSERIES, VINEYARDS, MARKET GARDENS, BEES-1879, FOREST PRODUCTS. Rows 1-10 detailing orchard and other agricultural products.

Page No. 154
Supervisor's Dist: No. 7
Enumeration Dist: No. 15

SCHEDULE 2.—Productions of Agriculture in Westchester in the County of York, State of New York, enumerated by me on the 15th day of June, 1880. J. C. King Enumerator.

Table with columns: THE NAME, TENURE, ACRES OF LAND, FARM VALUES, FENCES, LABOR, GRASS LANDS. Rows 1-10 listing farms like 'Mackey, Schmitz', 'Smith, John', etc.

Table with columns: NEAT CATTLE AND THEIR PRODUCTS, MOVEMENT, 1879, SHEEP, MOVEMENT, 1879, SWINE, POULTRY ON HAND. Rows 1-10 detailing livestock movements and production.

Table with columns: CEREALS, PULSE, FIBER, SUGAR, BARLEY, BUCKWHEAT, INDIAN CORN, OATS, RYE, WHEAT, etc. Rows 1-10 detailing crop production.

Table with columns: HOPS, POTATOES, TOBACCO, ORCHARDS-1879, NURSERIES, VINEYARDS, MARKET GARDENS, BEES-1879, FOREST PRODUCTS. Rows 1-10 detailing orchard and other agricultural products.

Page No. 15th
Supervisor's Dist: No. 4
Enumeration Dist: No. 15

NOTE A.—The light dotted perpendicular lines, which divide the spaces intended for numbers on this Schedule, are intended to separate the units, tens, &c., from each other, and the Enumerator should be careful that the figures are written within the small spaces so formed, thus:

7	4	1
4	2	1
3	9	

NOTE B.—Make an affirmative entry by a slanting line (thus /) in one of the three columns 2, 3, and 4, according as the fact is in the case of each farm—in column 2, if the occupier is the owner of the farm; in column 3, if he is the tenant at a fixed money rental; in column 4, if he conducts it for a share of the product.

NOTE C.—Enumerators will observe that there are 100 questions relating to each farm, which are arranged in four successive divisions of each schedule page.

SCHEDULE 2.—Productions of Agriculture in Mansfield Township in the County of York, State of Penn enumerated by me on the 15 day of June, 1880. W. C. Kling Enumerator.

Table with columns: Hay, Clover Seed, Grass Seed, Horses of all ages on hand June 1, 1880, Mules and Asses of all ages on hand June 1, 1880. Rows 1-10.

Table with columns: THE NAME, TENURE, ACRES OF LAND (IMPROVED, UNIMPROVED), FARM VALUES, FENCES, LABOR, GRASS LANDS (ACREAGE 1879, PRODUCTS HARVESTED IN 1879), Horses and Asses on hand June 1, 1880, Mules and Asses on hand June 1, 1880. Rows 1-10.

Table with columns: POULTRY ON HAND JUNE 1ST, 1880, EGGS PRODUCED IN 1879. Rows 1-10.

Table with columns: NEAT CATTLE AND THEIR PRODUCTS, MOVEMENT, 1879, SHEEP, MOVEMENT, 1879, SWINE, POULTRY ON HAND JUNE 1ST, 1880, EGGS PRODUCED IN 1879. Rows 1-10.

Table with columns: MAPLE—1879, BROOM CORN, 1879. Rows 1-10.

Table with columns: CEREALS, PULSE, FIBER, SUGAR, BROOM CORN, 1879. Rows 1-10.

Table with columns: TREES—1879, FOREST PRODUCTS. Rows 1-10.

Table with columns: ORCHARDS—1879, NURSERIES, VINEYARDS, MARKET GARDENS, BEES—1879, FOREST PRODUCTS. Rows 1-10.

Page No. 16
Supervisor's Dist. No. 7
Enumeration Dist. No. 15

NOTE A.—The light dotted perpendicular lines, which divide the spaces intended for numbers on this Schedule, are intended to separate the units, tens, &c. from each other, and the Enumerator should be careful that the figures are written within the small spaces so formed, thus: 74, the units in the right-hand small spaces.

NOTE B.—Make an affirmative entry by a slanting line (thus /) in one of the three columns 2, 3, and 4, according as the fact is in the case of each farm—in column 2, if the occupier is the owner of the farm; in column 3, if he is the tenant at a fixed money rental; in column 4, if he conducts it for a share of the product.

NOTE C.—Enumerators will observe that there are 100 questions relating to each farm, which are arranged in four successive divisions of each schedule page.

SCHEDULE 2.—Productions of Agriculture in Monkton in the County of York, State of N.Y. enumerated by me on the 10 day of June, 1880. W. C. ... Enumerator.

Table with columns: OF THE PERSON WHO CONDUCTS THIS FARM, ACRES OF LAND, FARM VALUES, FENCES, LABOR, GRASS LANDS. Includes farm names like 'Kathridor, Pius C.' and 'Moysen, Matthias'.

Table with columns: NEAR CATTLE AND THEIR PRODUCTS, MOVEMENT, 1879, SHEEP, MOVEMENT, 1879, SWINE, MOVEMENT, 1879. Includes sub-sections for Cattle, Sheep, and Swine.

Table with columns: CEREALS, PULSE, FIBER, SUGAR. Includes sub-sections for Barley, Buckwheat, Indian Corn, Oats, Rye, Wheat, Flax, Hemp, Sorghum, Maple, and Broom Corn.

Table with columns: HOPS, POTATOES, TOBACCO, ORCHARDS, NURSERIES, VINEYARDS, MARKET GARDENS, BEES, FOREST PRODUCTS. Includes sub-sections for Apples, Peaches, and other agricultural products.

Page No. 17
Supervisor's Dist. No. 7
Enumeration Dist. No. 15

SCHEDULE 2.—Pro...

Table with columns: OF THE PERSON WHO CONDUCTS THIS FARM, THE NAME. Includes farm names like 'Spitzer, Jacob' and 'Spitzer, Joseph'.

NOTE A.—The light dotted perpendicular lines, which divide the spaces intended for numbers on this Schedule, are intended to separate the units, tens, &c., from each other, and the Enumerator should be careful that the figures are written within the small spaces so formed, thus: 74, the units 421, the units 39

NOTE B.—Make an affirmative entry by a slanting line (thus /) in one of the three columns 2, 3, and 4, according as the fact is in the case of each farm—in column 2, if the occupier is the owner of the farm; in column 3, if he is the tenant at a fixed money rental; in column 4, if he conducts it for a share of the product.

NOTE C.—Enumerators will observe that there are 100 questions relating to each farm, which are arranged in four successive divisions of each schedule page.

Page No. 17
Supervisor's Dist. No. 7
Enumeration Dist. No. 15

SCHEDULE 2.—Productions of Agriculture in Monkheim in the County of York, State of Penn. enumerated by me on the 10th day of June, 1880. W. C. Kling Enumerator.

Table with columns: GRASS LANDS, SWINE, MAPLE-1879, BROOM CORN, BEES-1879, FOREST PRODUCTS. Includes sub-sections for POULTRY ON HAND, POULTRY PRODUCED, and various product measurements.

Table with columns: THE NAME, TENURE, ACRES OF LAND (IMPROVED, UNIMPROVED), FARM VALUES, FENCES, LABOR, GRASS LANDS. Lists farm owners like 'Muech, H.', 'Vossig', 'Alexander', etc., with their respective land and farm details.

Table with columns: NEAT CATTLE AND THEIR PRODUCTS, MOVEMENT, 1879, SHEEP, SWINE, POULTRY ON HAND. Details the movement and production of livestock, including cattle, sheep, and swine.

Table with columns: CEREALS, PULSE, FIBER, SUGAR, BROOM CORN. Details the production of various crops including wheat, corn, and sugar.

Table with columns: HOPS, POTATOES, TOBACCO, ORCHARDS, NURSERIES, VINEYARDS, MARKET GARDENS, BEES, FOREST PRODUCTS. Details the production of specialty crops and products like hops, potatoes, and orchard products.

Page No. 16
Supervisor's Dist. No. 7
Enumeration Dist. No. 15

NOTE A.—The light dotted perpendicular lines, which divide the spaces intended for numbers on this Schedule, are intended to separate the units, tens, &c., from each other, and the Enumerator should be careful that the figures are written within the small spaces so formed, thus:

7	4	1
4	2	1
3	9	

 the units in the right-hand small spaces.

NOTE B.—Make an affirmative entry by a slanting line (thus /) in one of the three columns 2, 3, and 4, according as the fact is in the case of each farm—in column 2, if the occupier is the owner of the farm; in column 3, if he is the tenant at a fixed money rental; in column 4, if he conducts it for a share of the product.

NOTE C.—Enumerators will observe that there are 100 questions relating to each farm, which are arranged in four successive divisions of each schedule page.

SCHEDULE 2.—Productions of Agriculture in Manheim in the County of York, State of Penn. enumerated by me on the 11th day of June, 1880. W. C. King Enumerator.

Table with columns: THE NAME, TENURE, ACRES OF LAND (IMPROVED, UNIMPROVED), FARM VALUES (Of farm, Of farming implements and machinery, Of Live Stock), FENCES, LABOR (Amount paid for wages, Weeks hired labor), GRASS LANDS (Mown, Not Mown, Hay, Clover Seed, Grass Seed), and Horses and Mules.

Table with columns: NEAT CATTLE AND THEIR PRODUCTS (ON HAND JUNE 1, 1880, MOVEMENT, 1879), SHEEP (MOVEMENT, 1879), SWINE (ON HAND JUNE 1, 1880, MOVEMENT, 1879), and BIRDS (ON HAND JUNE 1, 1880, MOVEMENT, 1879).

Table with columns: CEREALS (BARLEY, BUCKWHEAT, INDIAN CORN, OATS, RYE, WHEAT), PULSE (Beans, Peas), FIBER (FLAX, Hemp), SUGAR (SORGHUM, MAPLE), and BROOM CORN.

Table with columns: HOPS, POTATOES (Irish, Sweet), TOBACCO, ORCHARDS (APPLE, PEACH), NURSERIES, VINEYARDS, MARKET GARDENS, BEES, and FOREST PRODUCTS.

Page No. 19
Supervisor's Dist. No. 7
Enumeration Dist. No. 15

SCHEDULE 2.—Prod

Table with columns: OF THE PERSON WHO CONDUCTS THIS FARM, THE NAME.

Table with columns: NEAT CATTLE AND THEIR PRODUCTS (ON HAND JUNE 1, 1880, MOVEMENT, 1879), SHEEP (MOVEMENT, 1879), SWINE (ON HAND JUNE 1, 1880, MOVEMENT, 1879), and BIRDS (ON HAND JUNE 1, 1880, MOVEMENT, 1879).

Table with columns: CEREALS (BARLEY, BUCKWHEAT, INDIAN CORN, OATS, RYE, WHEAT), PULSE (Beans, Peas), FIBER (FLAX, Hemp), SUGAR (SORGHUM, MAPLE), and BROOM CORN.

Table with columns: HOPS, POTATOES (Irish, Sweet), TOBACCO, ORCHARDS (APPLE, PEACH), NURSERIES, VINEYARDS, MARKET GARDENS, BEES, and FOREST PRODUCTS.

Page No. 194
Supervisor's Dist. No. 7
Enumeration Dist. No. 15

NOTE A.—The light dotted perpendicular lines, which divide the spaces intended for numbers on this Schedule, are intended to separate the units, tens, &c., from each other, and the Enumerator should be careful that the figures are written within the small spaces so formed, thus:

7	4
4	9
3	9

 the units in the right-hand small spaces.

NOTE B.—Make an affirmative entry by a slanting line (thus /) in one of the three columns 2, 3, and 4, according as the fact is in the case of each farm—in column 2, if the occupier is the owner of the farm; in column 3, if he is the tenant at a fixed money rental; in column 4, if he conducts it for a share of the product.

NOTE C.—Enumerators will observe that there are 100 questions relating to each farm, which are arranged in four successive divisions of each schedule page.

SCHEDULE 2.—Productions of Agriculture in Manheim in the County of York, State of Penn.
enumerated by me on the 14 day of June, 1880. W. C. Kling Enumerator.

Table with 5 columns: Hay, Clover Seed, Grass Seed, Horses of all ages on hand June 1, 1880, Mules and Asses of all ages on hand June 1, 1880. Rows 1-10.

Table with columns: THE NAME, TENURE, ACRES OF LAND (Improved, Unimproved), FARM VALUES, FENCES, LABOR, GRASS LANDS, HORSES AND MULES. Rows 1-10.

Table with 4 columns: On hand June 1, 1880, Eggs produced in 1879, Poultry on hand June 1st, 1880, exclusive of spring hatching, Eggs produced in 1879. Rows 1-10.

Table with columns: NEAT CATTLE AND THEIR PRODUCTS, MOVEMENT, 1879, SHEEP, MOVEMENT, 1879, SWINE, CLIP, SPRING 1880, SHORN AND TO BE SHORN, POULTRY ON HAND JUNE 1ST, 1880, EXCLUSIVE OF SPRING HATCHING, EGGS PRODUCED IN 1879. Rows 1-10.

Table with 4 columns: MAPLE-1879, BROOM CORN, 1879, Sugar, Molasses, Area, Lbs. Rows 1-10.

Table with columns: CEREALS, BARLEY, BUCKWHEAT, INDIAN CORN, OATS, RYE, WHEAT, PULSE, BEANS, FIBER, FLAX-1879, HEMP, SUGAR, SORGHUM-1879, MAPLE-1879, BROOM CORN, 1879. Rows 1-10.

Table with 4 columns: BEES-1879, FOREST PRODUCTS, Amount of wood cut in 1879, Value of all forest products sold or consumed in 1879. Rows 1-10.

Table with columns: ORCHARDS-1879, HOPS, POTATOES, TOBACCO, APPLE, PEACH, NURSERIES, VINEYARDS, MARKET GARDENS, BEES-1879, FOREST PRODUCTS, Value of all forest products sold or consumed in 1879. Rows 1-10.

Page No. 20
Supervisor's Dist. No.
Enumeration Dist. No.

NOTE A.—The light dotted perpendicular lines, which divide the spaces intended for numbers on this Schedule, are intended to separate the units, tens, &c. from each other, and the Enumerator should be careful that the figures are written within the small spaces so formed, thus: 7 4 1, the units in the right-hand small spaces.
NOTE B.—Make an affirmative entry by a slanting line (thus /) in one of the three columns 2, 3, and 4, according as the fact is in the case of each farm—in column 2, if the occupier is the owner of the farm; in column 3, if he is the tenant at a fixed money rental; in column 4, if he conducts it for a share of the product.
NOTE C.—Enumerators will observe that there are 100 questions relating to each farm, which are arranged in four successive divisions of each schedule page.

Page No. 21st
Supervisor's Dist. No. 7
Enumeration Dist. No. 15

SCHEDULE 2.—Productions of Agriculture in Manheim in the County of _____, State of _____
enumerated by me on the 14th day of June, 1880.

Enumerator.

Table with columns: OF THE PERSON WHO CONDUCTS THIS FARM, ACRES OF LAND, FARM VALUES, FENCES, LABOR, GRASS LANDS. Includes farm names like 'Mardel Hared' and 'Snyder John'.

Table with columns: NEAT CATTLE AND THEIR PRODUCTS, SHEEP, SWINE, POULTRY ON HAND. Includes sub-sections for Cattle of all ages, Sheep and lambs, etc.

Table with columns: CEREALS, PULSE, FIBER, SUGAR, BROOM CORN. Includes sub-sections for Barley, Buckwheat, Indian Corn, etc.

Table with columns: HOPS, POTATOES, TOBACCO, ORCHARDS, NURSERIES, VINEYARDS, MARKET GARDENS, BEES, FOREST PRODUCTS. Includes sub-sections for Apples, Peaches, etc.

Table with columns: OF THE PERSON WHO CONDUCTS THIS FARM, THE NAME. Includes farm names like 'Sharb Thomas' and 'Nace Abraham'.

Table with columns: ON HAND JUNE 1, 1880. Includes sub-sections for Working oxen, Milch cows, etc.

Table with columns: BARLEY, BUCKWHEAT. Includes sub-sections for Area, Crop, etc.

Table with columns: HOPS, POTATOES. Includes sub-sections for Area, Crop, etc.

Page No. 21st
Supervisor's Dist. No. 7
Enumeration Dist. No. 15

NOTE A.—The light dotted perpendicular lines, which divide the spaces intended for numbers on this Schedule, are intended to separate the units, tens, &c. from each other, and the Enumerator should be careful that the figures are written within the small spaces so formed, thus:

7	4	1
4	2	1
3	9	

 the units in the right-hand small spaces.

NOTE B.—Make an affirmative entry by a slanting line (thus /) in one of the three columns 2, 3, and 4, according as the fact is in the case of each farm—in column 2, if the occupier is the owner of the farm; in column 3, if he is the tenant at a fixed money rental; in column 4, if he conducts it for a share of the product.

NOTE C.—Enumerators will observe that there are 100 questions relating to each farm, which are arranged in four successive divisions of each schedule page.

SCHEDULE 2.—Productions of Agriculture in Franklin in the County of York, State of Penn.
enumerated by me on the 14th day of June, 1880. J. G. King Enumerator.

GRASS LANDS. PRODUCTS HARVESTED IN 1879.

Hay.	Clover Seed.	Grass Seed.	Horses of all ages on hand June 1, 1880.	Mules and Asses of all ages on hand June 1, 1880.
Tons.	Bushels.	Bushels.	No.	No.
5			1	1
4			1	
18			2	
22			3	
10			1	1
3			1	
3			1	
3			1	
3			1	

OF THE PERSON WHO CONDUCTS THIS FARM.

THE NAME.	TENURE.			ACRES OF LAND.				FARM VALUES.			FENCES.		LABOR.		GRASS LANDS.						
	Owner.	Rents for fixed money rental.	Rents for shares of products.	Improved.	Unimproved.	Of farm, including land, fences, and buildings.	Of farming implements and machinery.	Of Live Stock.	Cost of building and repairing in 1879.	Cost of fertilizers purchased in 1879.	Amount paid for farm labor during 1879, including value of board.	Weeks hired labor in 1879 upon farm (and dairy) including house-work.	Estimated value of all farm productions (sold, consumed, or on hand) for 1879.	Mown.	Not Mown.	Hay.	Clover Seed.	Grass Seed.	Horses of all ages on hand June 1, 1880.	Mules and Asses of all ages on hand June 1, 1880.	
	No.	No.	No.	No.	No.	Dollars.	Dollars.	Dollars.	Dollars.	Dollars.	Dollars.	No.	Dollars.	Acres.	Acres.	Tons.	Bushels.	Bushels.	No.	No.	
Wm. Hiram	/			25	3	1500		40		20		52	300	5	20	4			1	1	
Wm. Abraham J.	/			27	3	2000		60		37	100	40	500	4	23	7			1	1	
John Adams	/			105	8	4000	300	500		42	50	40	500	20	85	25	2	2	2	2	
John J. J. J.	/			48	7	1000	60	100		35		1	150	10	38	6	1		1	1	
John J. J. J.	/			49	5	2500	125	225		18	8	1	500	14	25	10			2	2	
John J. J. J.	/			49	5	1900	50	100		18	7	1	200	6	20	5			1	1	
John J. J. J.	/			26	4	500	100	50		28			100	14	23	1			1	1	
John J. J. J.	/			85	4	3200	200	300		75	15	2	400	12	71	12	2	2	2	2	
John J. J. J.	/			21	3	500							50	2	19	2			1	1	
John J. J. J.	/			75	2	3000	200	300		60	38	25	800	10	65	7	14		2	2	

SWINE. POULTRY ON HAND JUNE 1st, 1880, EXCLUSIVE OF SPRING HATCHING.

On hand June 1, 1880.	Barred.	Other.	Eggs produced in 1879.
No.	No.	No.	Doz.
4	14		50
4	18		25
10	20		100
5	10		150
3	30		40
6	12		50
4	40		600
12			50

CATTLE AND THEIR PRODUCTS.

ON HAND JUNE 1, 1880.										MOVEMENT, 1879.										SHEEP.										SWINE.										POULTRY ON HAND JUNE 1st, 1880, EXCLUSIVE OF SPRING HATCHING.									
Cattle of all ages					Cattle of all ages					Sheep and lambs					Swine					Poultry																													
Working cows.	Milk cows.	Other.	Calves dropped.	Purchased.	Sold living.	Slaughtered.	Died, strayed, and at Jan and not recovered.	Milk sold, or sent to but for sale elsewhere in 1879.	Butter made on the farm in 1879.	Cheese made on the farm in 1879.	On hand June 1, 1880.	Lambs dropped.	Purchased.	Sold living.	Slaughtered.	Killed by dogs.	Died of disease.	Died of stress of weather.	Fleeces.	Weight.	On hand June 1, 1880.	Barred.	Other.	Eggs produced in 1879.																									
No.	No.	No.	No.	No.	No.	No.	No.	Gallons.	Lbs.	Lbs.	No.	No.	No.	No.	No.	No.	No.	No.	No.	Lbs.	No.	No.	No.	Doz.																									
2											200										2																												
3	1		3	1	1						700										2	10	10	22																									
7	5		7	2	1						100										3	5	5	18																									
2	2		2	1	1						200										1	5	7	22																									
3	2		3	0	1						208										5	7	5	22																									
3	2		3	1	1						50										8	8	8	14																									
1	5		1	4	4						300										1	1	1	20																									
3	3		3	1	2						208										6	6	6	14																									
4	3		3	1	2						208										6	6	6	14																									
4	3		3	1	2						208										6	6	6	14																									

MAPLE—1879. BROOM CORN. 1879.

Sugar.	Molasses.	Acres.	Lbs.
Lbs.	Galls.	Acres.	Lbs.
72	73	74	75

CEREALS.

BARLEY—1879.				BUCKWHEAT—1879.				INDIAN CORN—1879.				OATS—1879.				RYE—1879.				WHEAT—1879.				Canada Flax in 1879.		Flax—1879.		SUGAR.				BROOM CORN—1879.																			
Area.	Crop.	Area.	Crop.	Area.	Crop.	Area.	Crop.	Area.	Crop.	Area.	Crop.	Area.	Crop.	Area.	Crop.	Area.	Crop.	Area.	Crop.	Area.	Crop.	Bush.	Bush.	Acres.	Seed.	Straw.	Fiber.	Acres.	Tns.	Acres.	Sugar.	Molasses.	Sugar.	Molasses.	Acres.	Lbs.															
Acres.	Bush.	Acres.	Bush.	Acres.	Bush.	Acres.	Bush.	Acres.	Bush.	Acres.	Bush.	Acres.	Bush.	Acres.	Bush.	Acres.	Bush.	Acres.	Bush.	Acres.	Bush.	Acres.	Bush.	Acres.	Bush.	Tons.	Lbs.	Acres.	Tns.	Acres.	Lbs.	Galls.	Lbs.	Galls.	Lbs.	Acres.	Lbs.														
49	50	51	52	53	54	55	56	57	58	59	60	61	62	63	64	65	66	67	68	69	70	71	72	73	74	75	76	77	78	79	80	81	82	83	84	85	86	87	88	89	90	91	92	93	94	95	96	97	98	99	100

BEEES—1879. FOREST PRODUCTS.

Honey.	Wax.	Amount of wood cut in 1879.	Value of all forest products sold or consumed in 1879.
Lbs.	Lbs.	Cords.	Dollars.
97	98	99	100

ORCHARDS—1879. NURSERIES. VINEYARDS. MARKET GARDENS. BEES—1879. FOREST PRODUCTS.

HOPS—1879.				POTATOES (Irish)—1879.				POTATOES (Sweet)—1879.				TOBACCO—1879.				APPLES—1879.				PEACHES—1879.				Total value of orchard products of all kinds sold or consumed.		NURSERIES.		VINEYARDS.		MARKET GARDENS.		BEES—1879.		FOREST PRODUCTS.	
Area.	Crop.	Area.	Crop.	Area.	Crop.	Area.	Crop.	Area.	Crop.	Area.	Crop.	Area.	Crop.	Area.	Crop.	Area.	Crop.	Area.	Crop.	Area.	Crop.	Acres.	Value of produce sold in 1879.	Acres.	Value of produce sold in 1879.	Acres.	Value of produce sold in 1879.	Acres.	Value of produce sold in 1879.	Lbs.	Wax.	Amount of wood cut in 1879.	Value of all forest products sold or consumed in 1879.		
Acres.	Lbs.	Acres.	Bush.	Acres.	Bush.	Acres.	Lbs.	Acres.	Lbs.	Acres.	Bush.	Acres.	Bush.	Acres.	Bush.	Acres.	Bush.	Acres.	Bush.	Acres.	Bush.	Dollars.	No.	Dollars.	No.	Acres.	Value of produce sold in 1879.	Acres.	Value of produce sold in 1879.	Lbs.	Lbs.	Cords.	Dollars.		
76	77	78	79	80	81	82	83	84	85	86	87	88	89	90	91	92	93	94	95	96	97	98	99	100											

Page No. 22

Supervisor's Dist: No. 7

Enumeration Dist: No. 15

NOTE A.—The light dotted perpendicular lines, which divide the spaces intended for numbers on this Schedule, are intended to separate the units, tens, &c. from each other, and the Enumerator should be careful that the figures are written within the small spaces so formed, thus: 741, the units in the right-hand small spaces.

NOTE B.—Make an affirmative entry by a slanting line (thus /) in one of the three columns 2, 3, and 4, according as the fact is in the case of each farm—in column 2, if the occupier is the owner of the farm; in column 3, if he is the tenant at a fixed money rental; in column 4, if he conducts it for a share of the product.

NOTE C.—Enumerators will observe that there are 100 questions relating to each farm, which are arranged in four successive divisions of each schedule page.

SCHEDULE 2.—Productions of Agriculture in Franklin in the County of York, State of Pa. enumerated by me on the 14th day of June, 1880.

Table with columns: THE NAME, TENURE, ACRES OF LAND (IMPROVED, UNIMPROVED), FARM VALUES, FENCES, LABOR, GRASS LANDS. Includes entries for Boedler, George; Steiner, Oliver; Wilson, Walter; Sherman, Raphael; Wilderson, Valentine; Masamer, Edward; Jones, George T.; Wilderson, Henry; Jones, Anthony; Miller, Jacob D.

Table with columns: NEAT CATTLE AND THEIR PRODUCTS, SHEEP, SWINE. Includes sub-sections for ON HAND JUNE 1, 1880, MOVEMENT, 1879, and various production metrics.

Table with columns: CEREALS, PULSE, FIBER, SUGAR. Includes sub-sections for BARLEY, BUCKWHEAT, INDIAN CORN, OATS, RYE, WHEAT, and various crop production metrics.

Table with columns: HOPS, POTATOES, TOBACCO, ORCHARDS, NURSERIES, VINEYARDS, MARKET GARDENS, BEES, FOREST PRODUCTS. Includes sub-sections for various agricultural products and their production metrics.

Page No. 23

Supervisor's Dist: No. 7

Enumeration Dist: No. 15

SCHEDULE 2.—Prod

Table with columns: THE NAME, TENURE, ACRES OF LAND, FARM VALUES, FENCES, LABOR, GRASS LANDS. Includes entries for Sparkle, Edward A.; Kieckhefer, Charles; Miller, Henry B.; Wilderson, Adam; Wilderson, Levi; Wilderson, John; Wilderson, Peter; Wilderson, Samuel.

Table with columns: NEAT CATTLE AND THEIR PRODUCTS, SHEEP, SWINE. Includes sub-sections for ON HAND JUNE 1, 1880, MOVEMENT, 1879, and various production metrics.

Table with columns: CEREALS, PULSE, FIBER, SUGAR. Includes sub-sections for BARLEY, BUCKWHEAT, INDIAN CORN, OATS, RYE, WHEAT, and various crop production metrics.

Table with columns: HOPS, POTATOES, TOBACCO, ORCHARDS, NURSERIES, VINEYARDS, MARKET GARDENS, BEES, FOREST PRODUCTS. Includes sub-sections for various agricultural products and their production metrics.

led to separate the units, tens, &c., so formed, ' 74, the units 4 2 1 3 9

Page No. 23
Supervisor's Dist. No. 7
Enumeration Dist. No. 15

NOTE A.—The light dotted perpendicular lines, which divide the spaces intended for numbers on this Schedule, are intended to separate the units, tens, &c., from each other, and the Enumerator should be careful that the figures are written within the small spaces so formed, thus: 74, the units 4 2 1 3 9

NOTE B.—Make an affirmative entry by a slanting line (thus /) in one of the three columns 2, 3, and 4, according as the fact is in the case of each farm—in column 2, if the occupier is the owner of the farm; in column 3, if he is the tenant at a fixed money rental; in column 4, if he conducts it for a share of the product.

NOTE C.—Enumerators will observe that there are 100 questions relating to each farm, which are arranged in four successive divisions of each schedule page.

SCHEDULE 2.—Productions of Agriculture in Washington in the County of York, State of Penn enumerated by me on the 15 day of June, 1880. J. H. Klipp Enumerator.

Table with columns: PRODUCTS HARVESTED IN 1879, Hay, Clover Seed, Grass Seed, Horses of all ages on hand June 1, 1880, Mules and Asses, all ages on hand June 1, 1880. Rows 1-10.

Table with columns: OF THE PERSON WHO CONDUCTS THIS FARM, THE NAME, TENURE, ACRES OF LAND (IMPROVED, UNIMPROVED), FARM VALUES, FENCES, LABOR, GRASS LANDS (ACREAGE 1879, PRODUCTS HARVESTED IN 1879). Rows 1-10.

Table with columns: SWINE, POULTRY ON HAND JUNE 1ST, 1880, EXCLUSIVE OF SPRING HATCHING, EGGS PRODUCED IN 1879. Rows 1-10.

Table with columns: NEAT CATTLE AND THEIR PRODUCTS, MOVEMENT, 1879, SHEEP, MOVEMENT, 1879, SWINE, POULTRY ON HAND JUNE 1ST, 1880, EXCLUSIVE OF SPRING HATCHING. Rows 1-10.

Table with columns: MAPLE—1879, BROOM CORN, 1879. Rows 1-10.

Table with columns: CEREALS, PULSE, FIBER, SUGAR, BROOM CORN, 1879. Rows 1-10.

Table with columns: BEES—1879, FOREST PRODUCTS. Rows 1-10.

Table with columns: HOPS, POTATOES (Irish, Sweet), TOBACCO, ORCHARDS—1879, NURSERIES, VINEYARDS, MARKET GARDENS, BEES—1879, FOREST PRODUCTS. Rows 1-10.

Page No. 24

Supervisor's Dist. No. 7

Enumeration Dist. No. 15

NOTE A.—The light dotted perpendicular lines, which divide the spaces intended for numbers on this Schedule, are intended to separate the units, tens, &c., from each other, and the Enumerator should be careful that the figures are written within the small spaces so formed, thus: 7:41, the units in the right-hand small spaces.

NOTE B.—Make an affirmative entry by a slanting line (thus /) in one of the three columns 2, 3, and 4, according as the fact is in the case of each farm—in column 2, if the occupier is the owner of the farm; in column 3, if he is the tenant at a fixed money rental; in column 4, if he conducts it for a share of the product.

NOTE C.—Enumerators will observe that there are 100 questions relating to each farm, which are arranged in four successive divisions of each schedule page.

SCHEDULE 2.—Productions of Agriculture in Manhasset in the County of York, State of N.Y. enumerated by me on the 15th day of June, 1880.

Enumerator.

Table with columns: OF THE PERSON WHO CONDUCTS THIS FARM, ACRES OF LAND, FARM VALUES, FENCES, LABOR, GRASS LANDS. Includes farm names like Daniel, Deasman, Wilderson, Radisil, Garrett, Wilderson, Worthy, Raffle, Sperrheim, Tuedenbaugh.

Table with columns: NEAT CATTLE AND THEIR PRODUCTS, MOVEMENT, 1879, SHEEP, MOVEMENT, 1879, SWINE, MOVEMENT, 1879, POULTRY ON HAND JUNE 1ST, 1880.

Table with columns: CEREALS, PULSE, FIBER, SUGAR, BROOM CORN. Includes sub-sections for BARLEY, BUCKWHEAT, INDIAN CORN, OATS, RYE, WHEAT, FLAX, HEMP, SORGHUM, MAPLE.

Table with columns: HOPS, POTATOES, TOBACCO, ORCHARDS, NURSERIES, VINEYARDS, MARKET GARDENS, BEES, FOREST PRODUCTS. Includes sub-sections for APPLE, PEACH, HEMP.

Page No. 25

Supervisor's Dist. No. 7

Enumeration Dist. No. 15

SCHEDULE 2.—Pro

Table with columns: OF THE PERSON WHO CONDUCTS THIS FARM, THE NAME. Includes farm names like Kinchert, Miller, Green, Moore, Steiner, Lipp, W. C. Co., W. C. Co., W. C. Co., W. C. Co.

Table with columns: ON HAND JUNE 1, 1880, MOVEMENT, 1879, SHEEP, MOVEMENT, 1879, SWINE, MOVEMENT, 1879, POULTRY ON HAND JUNE 1ST, 1880.

Table with columns: CEREALS, PULSE, FIBER, SUGAR, BROOM CORN. Includes sub-sections for BARLEY, BUCKWHEAT, INDIAN CORN, OATS, RYE, WHEAT, FLAX, HEMP, SORGHUM, MAPLE.

Table with columns: HOPS, POTATOES, TOBACCO, ORCHARDS, NURSERIES, VINEYARDS, MARKET GARDENS, BEES, FOREST PRODUCTS. Includes sub-sections for APPLE, PEACH, HEMP.

ended to separate the units, tens, &c., as so formed, thus: 7:4:1, the units 4:2:1, the tens 3:9

Page No. 23
Supervisor's Dist. No. 9
Enumeration Dist. No. 15

NOTE A.—The light dotted perpendicular lines, which divide the spaces intended for numbers on this Schedule, are intended to separate the units, tens, &c., from each other, and the Enumerator should be careful that the figures are written within the small spaces so formed, thus: 7:4:1, the units 4:2:1, the tens 3:9
NOTE B.—Make an affirmative entry by a slanting line (thus /) in one of the three columns 2, 3, and 4, according as the fact is in the case of each farm—in column 2, if the occupier is the owner of the farm; in column 3, if he is the tenant at a fixed money rental; in column 4, if he conducts it for a share of the product.
NOTE C.—Enumerators will observe that there are 100 questions relating to each farm, which are arranged in four successive divisions of each schedule page.

SCHEDULE 2.—Productions of Agriculture in Manhattan in the County of York, State of New York, enumerated by me on the 16th day of June, 1880. J. C. King, Enumerator.

Table with columns: PRODUCTS HARVESTED IN 1879, HAY, Clover Seed, Grass Seed, Horses of all ages on hand June 1, 1880, Mules and Asses of all ages on hand June 1, 1880. Rows 1-10.

Table with columns: OF THE PERSON WHO CONDUCTS THIS FARM, ACRES OF LAND, FARM VALUES, FENCES, LABOR, GRASS LANDS. Includes farm names like Samuel, Henry, John, etc. Rows 1-10.

Table with columns: SWINE, POULTRY ON HAND JUNE 1ST, 1880, EXCLUSIVE OF SPRING HATCHING, EGGS PRODUCED IN 1879. Rows 1-10.

Table with columns: CATTLE AND THEIR PRODUCTS, MOVEMENT, 1879, SHEEP, SWINE, POULTRY ON HAND JUNE 1ST, 1880, EXCLUSIVE OF SPRING HATCHING, EGGS PRODUCED IN 1879. Rows 1-10.

Table with columns: MAPLE-1879, BROOM CORN, 1879. Rows 1-10.

Table with columns: CEREALS, PULSE, FIBER, SUGAR, BROOM CORN, 1879. Rows 1-10.

Table with columns: BEES-1879, FOREST PRODUCTS. Rows 1-10.

Table with columns: HOPS, POTATOES, TOBACCO, ORCHARDS-1879, NURSERIES, VINEYARDS, MARKET GARDENS, BEES-1879, FOREST PRODUCTS. Rows 1-10.

B

Page No. 24
Supervisor's Dist: No. 7
Enumeration Dist: No. 15

NOTE A.—The light dotted perpendicular lines, which divide the spaces intended for numbers on this Schedule, are intended to separate the units, tens, &c., from each other, and the Enumerator should be careful that the figures are written within the small spaces so formed, thus: 1 7 4, the units in the right-hand small spaces.

NOTE B.—Make an affirmative entry by a slanting line (thus /) in one of the three columns 2, 3, and 4, according as the fact is in the case of each farm—in column 2, if the occupier is the owner of the farm; in column 3, if he is the tenant at a fixed money rental; in column 4, if he conducts it for a share of the product.

NOTE C.—Enumerators will observe that there are 100 questions relating to each farm, which are arranged in four successive divisions of each schedule page.

SCHEDULE 2.—Productions of Agriculture in W. Manheim in the County of York, State of Penn. enumerated by me on the 21 day of June, 1880. J. C. King, Enumerator.

Table with columns: THE NAME, TENURE, ACRES OF LAND (IMPROVED, UNIMPROVED), FARM VALUES, FENCES, LABOR, GRASS LANDS, HORSES AND MULES. Includes farm names like 'Lupton, Hester' and 'Blouck, Jesse'.

Table with columns: NEAT CATTLE AND THEIR PRODUCTS, SHEEP, SWINE. Includes sub-sections for ON HAND JUNE 1, 1880, MOVEMENT, 1879, and CATTLE OF ALL AGES.

Table with columns: CEREALS, PULSE, FIBER, SUGAR, BROOM CORN. Includes sub-sections for BARLEY, BUCKWHEAT, INDIAN CORN, OATS, RYE, WHEAT, etc.

Table with columns: HOPS, POTATOES, TOBACCO, ORCHARDS—1879, NURSERIES, VINEYARDS, MARKET GARDENS, BEES—1879, FOREST PRODUCTS. Includes sub-sections for APPLES, PEACHES, etc.

Page No. 21
Supervisor's Dist: No.
Enumeration Dist: No.

SCHEDULE 2.—Prod

Table with columns: OF THE PERSON WHO CONDUCTS THIS FARM, THE NAME. Includes names like 'Kuhman, Elias' and 'West, Calogria'.

Table with columns: NEAT CATTLE AND THEIR PRODUCTS, SHEEP, SWINE. Includes sub-sections for ON HAND JUNE 1, 1880, MOVEMENT, 1879, and CATTLE OF ALL AGES.

Table with columns: CEREALS, PULSE, FIBER, SUGAR, BROOM CORN. Includes sub-sections for BARLEY, BUCKWHEAT, INDIAN CORN, OATS, RYE, WHEAT, etc.

Table with columns: HOPS, POTATOES, TOBACCO, ORCHARDS—1879, NURSERIES, VINEYARDS, MARKET GARDENS, BEES—1879, FOREST PRODUCTS. Includes sub-sections for APPLES, PEACHES, etc.

Page No. 27
Supervisor's Dist. No.
Enumeration Dist. No.

NOTE A.—The light dotted perpendicular lines, which divide the spaces intended for numbers on this Schedule, are intended to separate the units, tens, &c. from each other, and the Enumerator should be careful that the figures are written within the small spaces so formed, thus: 74, the units in the right-hand small spaces.

NOTE B.—Make an affirmative entry by a slanting line (thus /) in one of the three columns 2, 3, and 4, according as the fact is in the case of each farm—in column 2, if the occupier is the owner of the farm; in column 3, if he is the tenant at a fixed money rental; in column 4, if he conducts it for a share of the product.

NOTE C.—Enumerators will observe that there are 100 questions relating to each farm, which are arranged in four successive divisions of each schedule page.

SCHEDULE 2.—Productions of Agriculture in Northampton in the County of York, State of Ohio
enumerated by me on the 21 day of June, 1880. W. C. King Enumerator.

Table with columns: PRODUCTS HARVESTED IN 1879. Hay, Clover Seed, Grass Seed, Horses and Asses, Mules and Oxen.

Table with columns: OF THE PERSON WHO CONDUCTS THIS FARM, ACRES OF LAND, FARM VALUES, FENCES, LABOR, GRASS LANDS. Includes farm names like 'Wm. G. King' and 'H. G. King'.

Table with columns: POULTRY ON HAND, EGGS PRODUCED IN 1879. Includes categories like 'Barn-yard' and 'Other'.

Table with columns: NEAT CATTLE AND THEIR PRODUCTS, MOVEMENT, 1879. Includes sub-sections for 'Cattle of all ages' and 'Died, strayed, and stolen'.

Table with columns: MAPLE—1879, BROOM CORN—1879. Includes columns for 'Molasses' and 'Lbs.'.

Table with columns: CEREALS, PULSE, FIBER, SUGAR, BROOM CORN. Includes sub-sections for 'Barley', 'Buckwheat', 'Indian Corn', etc.

Table with columns: BEES—1879, FOREST PRODUCTS. Includes columns for 'Honey', 'Wax', and 'Value of all forest products'.

Table with columns: ORCHARDS—1879, NURSERIES, VINEYARDS, MARKET GARDENS, BEES—1879, FOREST PRODUCTS. Includes sub-sections for 'Apples', 'Peaches', 'Grapes', etc.

Page No. 28
Supervisor's Dist: No. 7
Enumeration Dist: No. 15

NOTE A.—The light dotted perpendicular lines, which divide the spaces intended for numbers on this Schedule, are intended to separate the units, tens, &c., from each other, and the Enumerator should be careful that the figures are written within the small spaces so formed, thus: 7 1 4, the units in the right-hand small spaces.
NOTE B.—Make an affirmative entry by a slanting line (thus, /) in one of the three columns 2, 3, and 4, according as the fact is in the case of each farm—in column 2, if the occupier is the owner of the farm; in column 3, if he is the tenant at a fixed money rental; in column 4, if he conducts it for a share of the product.
NOTE C.—Enumerators will observe that there are 100 questions relating to each farm, which are arranged in four successive divisions of each schedule page.

Page No. 29
Supervisor's Dist: No. 7
Enumeration Dist: No. 15

SCHEDULE 2.—Productions of Agriculture in W. Munroe in the County of Wald, State of Cal.
enumerated by me on the 22 day of June, 1880. W. Munroe Enumerator.

SCHEDULE 2.—Pro

Table with columns: OF THE PERSON WHO CONDUCTS THIS FARM, ACRES OF LAND, FARM VALUES, FENCES, LABOR, GRASS LANDS. Includes farm names like Isaac, Peter, George, Jacob, etc.

Table with columns: NEAT CATTLE AND THEIR PRODUCTS, MOVEMENT, 1879, SHEEP, MOVEMENT, 1879, SWINE, POULTRY ON HAND. Includes data for cattle, sheep, and swine.

Table with columns: CEREALS, PULSE, FIBER, SUGAR, BARLEY, BUCKWHEAT, INDIAN CORN, OATS, RYE, WHEAT, etc.

Table with columns: ORCHARDS—1879, NURSERIES, VINEYARDS, MARKET GARDENS, BEES—1879, FOREST PRODUCTS. Includes data for orchards, nurseries, vineyards, etc.

Table with columns: OF THE PERSON WHO CONDUCTS THIS FARM, THE NAME. Includes farm names like Jacob, Peter, George, etc.

ed to separate the units, tens, &c., so formed, thus: 7 4 1 the units 4 2 1 3 9

Page No. 29 Supervisor's Dist. No. 7 Enumeration Dist. No. 15

NOTE A.—The light dotted perpendicular lines, which divide the spaces intended for numbers on this Schedule, are intended to separate the units, tens, &c., from each other, and the Enumerator should be careful that the figures are written within the small spaces so formed, thus: 7 4 1 the units 4 2 1 3 9

NOTE B.—Make an affirmative entry by a slanting line (thus /) in one of the three columns 2, 3, and 4, according as the fact is in the case of each farm—in column 2, if the occupier is the owner of the farm; in column 3, if he is the tenant at a fixed money rental; in column 4, if he conducts it for a share of the product.

NOTE C.—Enumerators will observe that there are 100 questions relating to each farm, which are arranged in four successive divisions of each schedule page.

SCHEDULE 2.—Productions of Agriculture in M. Marston in the County of York, State of Penn. enumerated by me on the 25 day of June, 1880. J. R. King Enumerator.

Table with columns: HAY, Clover Seed, Grass Seed, Horses of all ages on hand June 1, 1880, Mules and Asses, all ages on hand June 1, 1880. Rows 1-10.

Table with columns: THE NAME, TENURE, ACRES OF LAND (IMPROVED, UNIMPROVED), FARM VALUES, FENCES, LABOR, GRASS LANDS. Rows 1-10.

Table with columns: POULTRY ON HAND JUNE 1ST, 1880, EGGS PRODUCED IN 1879. Rows 1-10.

Table with columns: NEAT CATTLE AND THEIR PRODUCTS, MOVEMENT, 1879, SHEEP, MOVEMENT, 1879, SWINE, POULTRY ON HAND JUNE 1ST, 1880, EGGS PRODUCED IN 1879. Rows 1-10.

Table with columns: MAPLE—1879, BROOM CORN, 1879. Rows 1-10.

Table with columns: CEREALS, PULSE, FIBER, SUGAR, BROOM CORN, 1879. Rows 1-10.

Table with columns: BEES—1879, FOREST PRODUCTS. Rows 1-10.

Table with columns: HOPS, POTATOES, TOBACCO, ORCHARDS—1879, NURSERIES, VINEYARDS, MARKET GARDENS, BEES—1879, FOREST PRODUCTS. Rows 1-10.

Page No. 30
Supervisor's Dist. No. 7
Enumeration Dist. No. 15

NOTE A.—The light dotted perpendicular lines, which divide the spaces intended for numbers on this Schedule, are intended to separate the units, tens, &c. from each other, and the Enumerator should be careful that the figures are written within the small spaces so formed, thus: 1741, the unit, 421, the tens, 39, the hundreds.

NOTE B.—Make an affirmative entry by a slanting line (thus /) in one of the three columns 2, 3, and 4, according as the fact is in the case of each farm—in column 2, if the occupier is the owner of the farm; in column 3, if he is the tenant at a fixed money rental; in column 4, if he conducts it for a share of the product.

NOTE C.—Enumerators will observe that there are 100 questions relating to each farm, which are arranged in four successive divisions of each schedule page.

SCHEDULE 2.—Productions of Agriculture in W. W. W. in the County of York, State of Pa. enumerated by me on the 25 day of June, 1880. J. P. Kling, Enumerator.

Table with columns: OF THE PERSON WHO CONDUCTS THIS FARM, ACRES OF LAND, FARM VALUES, FENCES, LABOR, GRASS LANDS. Includes farm names like Stuart, Wm. and product counts.

Table with columns: NEAT CATTLE AND THEIR PRODUCTS, SHEEP, SWINE, POULTRY ON HAND. Includes counts for various livestock and their products.

Table with columns: CEREALS, PULSE, FIBER, SUGAR, BROOM CORN. Includes crop areas and yields for various grains.

Table with columns: HOPS, POTATOES, TOBACCO, ORCHARDS, NURSERIES, VINEYARDS, MARKET GARDENS, BEES, FOREST PRODUCTS. Includes production data for various agricultural products.

Page No. 31
Supervisor's Dist. No. 7
Enumeration Dist. No. 15

SCHEDULE 2.—Pro

Table with columns: OF THE PERSON WHO CONDUCTS THIS FARM, THE NAME. Includes farm names like Hoffacker, Wm.

Table with columns: NEAT CATTLE AND THEIR PRODUCTS, SHEEP, SWINE, POULTRY ON HAND. Includes livestock counts.

Table with columns: CEREALS, PULSE, FIBER, SUGAR, BROOM CORN. Includes crop data.

Table with columns: HOPS, POTATOES, TOBACCO, ORCHARDS, NURSERIES, VINEYARDS, MARKET GARDENS, BEES, FOREST PRODUCTS. Includes production data.

Page No. 31
Supervisor's Dist. No. 7
Enumeration Dist. No. 15

NOTE A.—The light dotted perpendicular lines, which divide the spaces intended for numbers on this Schedule, are intended to separate the units, tens, &c. from each other, and the Enumerator should be careful that the figures are written within the small spaces so formed, thus:

7	4
4	2
3	9

 the units in the right-hand small spaces.

NOTE B.—Make an affirmative entry by a slanting line (thus /) in one of the three columns 2, 3, and 4, according as the fact is in the case of each farm—in column 2, if the occupier is the owner of the farm; in column 3, if he is the tenant at a fixed money rental; in column 4, if he conducts it for a share of the product.

NOTE C.—Enumerators will observe that there are 100 questions relating to each farm, which are arranged in four successive divisions of each schedule page.

SCHEDULE 2.—Productions of Agriculture in Washington in the County of York, State of Penn. enumerated by me on the 26 day of June, 1880. W. C. King Enumerator.

Table with columns: Grass Lands, Hay, Clover Seed, Grass Seed, Horses of all ages on hand June 1, 1880, Mules and Asses of all ages on hand June 1, 1880. Rows 1-10.

Table with columns: THE NAME, TENURE, IMPROVED, UNIMPROVED, FARM VALUES, FENCES, LABOR, GRASS LANDS, HORSES AND MULES. Rows 1-10.

Table with columns: MOVEMENT, 1879, MOVEMENT, 1880, SHEEP, SWINE, POULTRY ON HAND. Rows 1-10.

Table with columns: CEREALS, PULSE, FIBER, SUGAR, BROOM CORN. Rows 1-10.

Table with columns: HOPS, POTATOES, TOBACCO, ORCHARDS, NURSERIES, VINEYARDS, MARKET GARDENS, BEES, FOREST PRODUCTS. Rows 1-10.

Table with columns: WINE, POULTRY ON HAND, EGGS PRODUCED IN 1879. Rows 1-10.

Table with columns: MAPLE-1879, BROOM CORN, 1879. Rows 1-10.

Table with columns: FOREST PRODUCTS, 1879. Rows 1-10.

Page No. 32
Supervisor's Dist: No. 7
Enumeration Dist: No. 15

NOTE A.—The light dotted perpendicular lines, which divide the spaces intended for numbers on this Schedule, are intended to separate the units, tens, &c. from each other, and the Enumerator should be careful that the figures are written within the small spaces so formed, thus:

7	4	1
4	2	1
3	9	

 the units

NOTE B.—Make an affirmative entry by a slanting line (thus /) in one of the three columns 2, 3, and 4, according as the fact is in the case of each farm—in column 2, if the occupier is the owner of the farm; in column 3, if he is the tenant at a fixed money rental; in column 4, if he conducts it for a share of the product.

NOTE C.—Enumerators will observe that there are 100 questions relating to each farm, which are arranged in four successive divisions of each schedule page.

SCHEDULE 2.—Productions of Agriculture in Madison in the County of York, State of Pa. enumerated by me on the 26 day of June, 1880. Wm. H. King Enumerator.

Table with columns: THE NAME, TENURE, ACRES OF LAND (IMPROVED, UNIMPROVED), FARM VALUES, FENCES, LABOR, GRASS LANDS. Rows 1-10 listing farms like 'Garrett, Oliver W.', 'Petersen, William', etc.

Table with columns: NEAT CATTLE AND THEIR PRODUCTS, MOVEMENT, 1879, SHEEP, MOVEMENT, 1879, SWINE, MOVEMENT, 1879, POULTRY ON HAND JUNE 1, 1880. Rows 1-10 detailing livestock movements and production.

Table with columns: CEREALS (BARLEY, BUCKWHEAT, INDIAN CORN, OATS, RYE, WHEAT), PULSE, FIBER (FLAX, HEMP), SUGAR (SORGUM, MAPLE), BROOM CORN. Rows 1-10 detailing crop production.

Table with columns: HOPS, POTATOES, TOBACCO, ORCHARDS (APPLE, PEACH), NURSERIES, VINEYARDS, MARKET GARDENS, BEES, FOREST PRODUCTS. Rows 1-10 detailing horticultural and forest products.

Page No. 33
Supervisor's Dist: No. 7
Enumeration Dist: No. 15

SCHEDULE 2.—Pro

Table with columns: THE NAME, TENURE, ACRES OF LAND, FARM VALUES, FENCES, LABOR, GRASS LANDS. Rows 1-10 (partially visible).

Table with columns: NEAT CATTLE AND THEIR PRODUCTS, MOVEMENT, 1879, SHEEP, MOVEMENT, 1879, SWINE, MOVEMENT, 1879, POULTRY ON HAND JUNE 1, 1880. Rows 1-10 (partially visible).

Table with columns: CEREALS (BARLEY, BUCKWHEAT, INDIAN CORN, OATS, RYE, WHEAT), PULSE, FIBER (FLAX, HEMP), SUGAR (SORGUM, MAPLE), BROOM CORN. Rows 1-10 (partially visible).

Table with columns: HOPS, POTATOES, TOBACCO, ORCHARDS (APPLE, PEACH), NURSERIES, VINEYARDS, MARKET GARDENS, BEES, FOREST PRODUCTS. Rows 1-10 (partially visible).

Page No. 38
Supervisor's Dist. No. 7
Enumeration Dist. No. 15

NOTE A.—The light dotted perpendicular lines, which divide the spaces intended for numbers on this Schedule, are intended to separate the units, tens, &c., from each other, and the Enumerator should be careful that the figures are written within the small spaces so formed, thus: 74, the units in the right-hand small spaces.

NOTE B.—Make an affirmative entry by a slanting line (thus /) in one of the three columns 2, 3, and 4, according as the fact is in the case of each farm—in column 2, if the occupier is the owner of the farm; in column 3, if he is the tenant at a fixed money rental; in column 4, if he conducts it for a share of the product.

NOTE C.—Enumerators will observe that there are 100 questions relating to each farm, which are arranged in four successive divisions of each schedule page.

SCHEDULE 2.—Productions of Agriculture in West Manchester in the County of York, State of Penn.
enumerated by me on the 30 day of June, 1880. M. C. Kling Enumerator.

Main agricultural schedule table with columns for Farm Name, Acres of Land (Improved/Unimproved), Farm Values, Fences, Labor, Grass Lands, Neat Cattle and Their Products, Sheep, Swine, Poultry, Cereals, Pulse, Fiber, Sugar, Broom Corn, Orchards, Nurseries, Vineyards, Market Gardens, Bees, and Forest Products. Includes handwritten entries for 'C. C. Case' and various numerical data.

Left margin tables including 'LANDS', 'POULTRY ON HAND', 'EGGS PRODUCED IN 1879', 'BROOM CORN', and 'FOREST PRODUCTS'.

Page No.
Supervisor's Dist: No.
Enumeration Dist: No.

NOTE A.—The light dotted perpendicular lines, which divide the spaces intended for numbers on this Schedule, are intended to separate the units, tens, &c. from each other, and the Enumerator should be careful that the figures are written within the small spaces so formed, thus:
NOTE B.—Make an affirmative entry by a slanting line (thus /) in one of the three columns 2, 3, and 4, according as the fact is in the case of each farm—in column 2, if the occupier is the owner of the farm; in column 3, if he is the tenant at a fixed money rental; in column 4, if he conducts it for a share of the product.
NOTE C.—Enumerators will observe that there are 100 questions relating to each farm, which are arranged in four successive divisions of each schedule page.

Page No.
Supervisor's Dist: No.
Enumeration Dist: No.

SCHEDULE 2.—Productions of Agriculture in in the County of, State of
enumerated by me on the day of June, 1880.

Main agricultural schedule table with columns for Farm Name, Land (Improved/Unimproved), Farm Values, Fences, Labor, Grass Lands, Neat Cattle and Their Products, Sheep, Cereals, Fiber, Sugar, Hops, Potatoes, Tobacco, Orchards, Nurseries, Vineyards, Market Gardens, Bees, and Forest Products.

SCHEDULE 2.—Pr

Partial view of the agricultural schedule table on the right page, showing columns for Farm Name, Land, and various agricultural products.

34

34

Page No. 14
Supervisor's Dist. No. 1
Enumeration Dist. No. 15

NOTE A.—The light dotted perpendicular lines, which divide the spaces intended for numbers on this Schedule, are intended to separate the units, tens, &c., from each other, and the Enumerator should be careful that the figures are written within the small spaces so formed, thus:

7	4
4	2
1	3

 the units in the right-hand small spaces.

NOTE B.—Make an affirmative entry by a slanting line (thus /) in one of the three columns 2, 3, and 4, according as the fact is in the case of each farm—in column 2, if the occupier is the owner of the farm; in column 3, if he is the tenant at a fixed money rental; in column 4, if he conducts it for a share of the product.

NOTE C.—Enumerators will observe that there are 100 questions relating to each farm, which are arranged in four successive divisions of each schedule page.

SCHEDULE 2.—Productions of Agriculture in West Granheim in the County of York, State of Pa.
enumerated by me on the 5th day of June, 1880. W. C. Kelling, Enumerator.

Partial view of the left side of the schedule page, showing sections for 'GRASS LANDS', 'POULTRY ON HAND', 'SWINE', 'MAPLE-1879', 'BROOM CORN', 'HOPS', 'FOREST PRODUCTS', 'RICE-1879', and 'FOREST PRODUCTS'.

Table titled 'OF THE PERSON WHO CONDUCTS THIS FARM' with columns for 'THE NAME', 'TENURE', 'ACRES OF LAND' (Improved, Unimproved), 'FARM VALUES', 'FENCES', 'LABOR', and 'GRASS LANDS'. It lists several farms with handwritten entries for names like 'Ingona C. Johnson' and 'John Andrew'.

Table titled 'NEAT CATTLE AND THEIR PRODUCTS' with columns for 'ON HAND JUNE 1, 1880', 'MOVEMENT, 1879', and 'ON HAND JUNE 1, 1880'. It details the number of cattle, sheep, and lambs, along with various products like milk, butter, and cheese.

Table titled 'CEREALS' with columns for 'BARLEY', 'BUCKWHEAT', 'INDIAN CORN', 'OATS', 'RYE', 'WHEAT', 'PULSE', 'FIBER', 'SUGAR', and 'BROOM CORN'. It lists crop areas and yields for various grains.

Table titled 'ORCHARDS-1879' with columns for 'HOPS', 'POTATOES', 'TOBACCO', 'APPLE', 'PEACH', 'NURSERIES', 'VINEYARDS', 'MARKET GARDENS', 'BEES-1879', and 'FOREST PRODUCTS'. It details the production of various fruits and agricultural products.

Page No. 2
Supervisor's Dist. No. 7
Enumeration Dist. No. 15

NOTE A.—The light dotted perpendicular lines, which divide the spaces intended for numbers on this Schedule, are intended to separate the units, tens, &c., from each other, and the Enumerator should be careful that the figures are written within the small spaces so formed, thus:

7	4	1
4	2	1
3	9	

NOTE B.—Make an affirmative entry by a slanting line (thus /) in one of the three columns 2, 3, and 4, according as the fact is in the case of each farm—in column 2, if the occupier is the owner of the farm; in column 3, if he is the tenant at a fixed money rental; in column 4, if he conducts it for a share of the product.

NOTE C.—Enumerators will observe that there are 100 questions relating to each farm, which are arranged in four successive divisions of each schedule page.

SCHEDULE 2.—Productions of Agriculture in West Branch in the County of York, State of Pa. enumerated by me on the 5th day of June, 1880. M.C. Shiner, Enumerator.

SCHEDULE 2.—Pro

Table with columns: THE NAME, TENURE, ACRES OF LAND (IMPROVED, UNIMPROVED), FARM VALUES, FENCES, LABOR, GRASS LANDS (ACREAGE 1879, PRODUCTS HARVESTED IN 1879), HORSES AND MULES, and MILLS AND SAWMILLS. Includes handwritten entries for various farms and their details.

Table with columns: NEAT CATTLE AND THEIR PRODUCTS, MOVEMENT, 1879, SHEEP, MOVEMENT, 1879, SWINE, MOVEMENT, 1879, and POULTRY ON HAND. Includes handwritten entries for cattle, sheep, and swine movements and products.

Table with columns: CEREALS (BARLEY, BUCKWHEAT, INDIAN CORN, OATS, RYE, WHEAT), PULSE, FIBER (FLAX, HEMP), and SUGAR (SORGHUM, MAPLE). Includes handwritten entries for crop areas and yields.

Table with columns: HOPS, POTATOES, TOBACCO, ORCHARDS (APPLE, PEACH), NURSERIES, VINEYARDS, MARKET GARDENS, BEES, and FOREST PRODUCTS. Includes handwritten entries for orchard and market garden details.

Table with columns: THE NAME, HORSES AND MULES, and MILLS AND SAWMILLS. Includes handwritten entries for farm details.

Table with columns: NEAT CATTLE AND THEIR PRODUCTS, MOVEMENT, 1879, SHEEP, MOVEMENT, 1879, SWINE, MOVEMENT, 1879, and POULTRY ON HAND. Includes handwritten entries for livestock movements.

Table with columns: CEREALS (BARLEY, BUCKWHEAT, INDIAN CORN, OATS, RYE, WHEAT), PULSE, FIBER (FLAX, HEMP), and SUGAR (SORGHUM, MAPLE). Includes handwritten entries for crop areas.

Table with columns: HOPS, POTATOES, TOBACCO, ORCHARDS (APPLE, PEACH), NURSERIES, VINEYARDS, MARKET GARDENS, BEES, and FOREST PRODUCTS. Includes handwritten entries for orchard and market garden details.

Page No. 3

Supervisor's Dist. No. 7

Enumeration Dist. No. 15

NOTE A.—The light dotted perpendicular lines, which divide the spaces intended for numbers on this Schedule, are intended to separate the units, tens, &c., from each other, and the Enumerator should be careful that the figures are written within the small spaces so formed, thus: 741, the units in the right-hand small spaces.

NOTE B.—Make an affirmative entry by a slanting line (thus /) in one of the three columns 2, 3, and 4, according as the fact is in the case of each farm—in column 2, if the occupier is the owner of the farm; in column 3, if he is the tenant at a fixed money rental; in column 4, if he conducts it for a share of the product.

NOTE C.—Enumerators will observe that there are 100 questions relating to each farm, which are arranged in four successive divisions of each schedule page.

SCHEDULE 2.—Productions of Agriculture in W. Manheim in the County of York, State of Penn. enumerated by me on the 12 day of June, 1880. J. C. Klein Enumerator.

Table with columns: THE NAME, ACRES OF LAND (VENUE, IMPROVED, UNIMPROVED), FARM VALUES, FENCES, LABOR, GRASS LANDS, HORSES AND MULES. Includes entries for John Hase, Jacob Hase, George Saltgaver, etc.

Table with columns: NEAT CATTLE AND THEIR PRODUCTS, MOVEMENT, 1879, SHEEP, MOVEMENT, 1879, SWINE, MOVEMENT, 1879, POULTRY ON HAND. Includes columns for various types of livestock and their movements.

Table with columns: CEREALS, PULSE, FIBER, SUGAR, BROOM CORN. Includes columns for various agricultural products like wheat, corn, and sugar.

Table with columns: FOREST PRODUCTS, HOPS, POTATOES, TOBACCO, ORCHARDS, NURSERIES, VINEYARDS, MARKET GARDENS, BEES, FOREST PRODUCTS. Includes columns for various types of forest and agricultural products.

to separate the units, tens, &c., formed, thus: 741, the units in the case of each farm—in column 4, if he conducts it for divisions of each schedule page.

of W. Manheim Enumerator.

Table with columns: PRODUCTS HARVESTED IN 1879, HORSES AND MULES. Includes columns for various types of livestock and their products.

Table with columns: POULTRY ON HAND, EGGS PRODUCED IN 1879. Includes columns for various types of poultry and their eggs.

Table with columns: MAPLE-1879, BROOM CORN. Includes columns for various types of agricultural products.

Table with columns: FOREST PRODUCTS. Includes columns for various types of forest products.

Page No. 2
Supervisor's Dist: No. 1
Enumeration Dist: No. 15

NOTE A.—The light dotted perpendicular lines, which divide the spaces intended for numbers on this Schedule, are intended to separate the units, tens, &c., from each other, and the Enumerator should be careful that the figures are written within the small spaces so formed, thus: 7:4, the units in the right-hand small spaces.

NOTE B.—Make an affirmative entry by a slanting line (thus /) in one of the three columns 2, 3, and 4, according as the fact is in the case of each farm—in column 2, if the occupier is the owner of the farm; in column 3, if he is the tenant at a fixed money rental; in column 4, if he conducts it for a share of the product.

NOTE C.—Enumerators will observe that there are 100 questions relating to each farm, which are arranged in four successive divisions of each schedule page.

SCHEDULE 2.—Productions of Agriculture in West Manheim in the County of York, State of Pennsylvania, enumerated by me on the 17th day of June, 1880. J. C. Kling, Enumerator.

Table with columns: OF THE PERSON WHO CONDUCTS THIS FARM, ACRES OF LAND, FARM VALUES, FENCES, LABOR, GRASS LANDS. Includes farm names like Rabenstein, Williams, Maseman, etc.

Table with columns: SEAT CATTLE AND THEIR PRODUCTS, MOVEMENT, 1879, SHEEP, MOVEMENT, 1879, SWINE, POULTRY ON HAND. Includes data for various livestock types.

Table with columns: CEREALS, PULSE, FIBER, SUGAR, BROOM CORN. Includes data for crops like Barley, Buckwheat, Indian Corn, etc.

Table with columns: HOPS, POTATOES, TOBACCO, ORCHARDS, NURSERIES, VINEYARDS, MARKET GARDENS, BEES, FOREST PRODUCTS. Includes data for various agricultural products.

Page No. 38
Supervisor's Dist: No. 1
Enumeration Dist: No. 15

SCHEDULE 2.—P

Table with columns: OF THE PERSON WHO CONDUCTS THIS FARM, THE NAME. Includes farm names like Gurrill, Marble, etc.

Table with columns: ON HAND JUNE 1, 1880, MOVEMENT, 1879. Includes data for livestock.

Table with columns: CEREALS, PULSE, FIBER, SUGAR, BROOM CORN. Includes data for crops.

Table with columns: HOPS, POTATOES, TOBACCO, ORCHARDS, NURSERIES, VINEYARDS, MARKET GARDENS, BEES, FOREST PRODUCTS. Includes data for various agricultural products.

Page No. _____

Supervisor's Dist: No. _____

Enumeration Dist: No. _____

NOTE A.—The light dotted perpendicular lines, which divide the spaces intended for numbers on this Schedule, are intended to separate the units, tens, &c., from each other, and the Enumerator should be careful that the figures are written within the small spaces so formed, thus:

7	4	1
4	2	1
3	9	

NOTE B.—Make an affirmative entry by a slanting line (thus /) in one of the three columns 2, 3, and 4, according as the fact is in the case of each farm—in column 2, if the occupier is the owner of the farm; in column 3, if he is the tenant at a fixed money rental; in column 4, if he conducts it for a share of the product.

NOTE C.—Enumerators will observe that there are 100 questions relating to each farm, which are arranged in four successive divisions of each schedule page.

SCHEDULE 2.—Productions of Agriculture in West Franklin in the County of York, State of Pa. enumerated by me on the 14th day of June, 1880. J. C. King Enumerator.

Table with columns: Hay, Clover Seed, Grass Seed, Horses of all ages on hand June 1, 1880, Mules and Asses of all ages on hand June 1, 1880. Rows 1-10.

Table with columns: On hand June 1, 1880, Eggs produced in 1879. Rows 1-10.

Table with columns: Sugar, Molasses, Broom Corn. Rows 1-10.

Table with columns: Hops, Potatoes, Tobacco, Apples, Peaches, Nurseries, Vineyards, Market Gardens, Bees, Forest Products. Rows 1-10.

Table with columns: THE NAME, TENURE, ACRES OF LAND (Improved, Unimproved), FARM VALUES, FENCES, LABOR, GRASS LANDS. Rows 1-10.

Table with columns: NEAT CATTLE AND THEIR PRODUCTS, MOVEMENT, 1879, SHEEP, MOVEMENT, 1879, SWINE, MOVEMENT, 1879, POULTRY ON HAND. Rows 1-10.

Table with columns: CEREALS (Barley, Rye, Wheat), PULSE (Beans, Peas), FIBER (Flax, Hemp), SUGAR (Sorghum, Maple), BROOM CORN. Rows 1-10.

Table with columns: HOPS, POTATOES, TOBACCO, APPLES, PEACHES, NURSERIES, VINEYARDS, MARKET GARDENS, BEES, FOREST PRODUCTS. Rows 1-10.

Page No. 7
Supervisor's Dist: No. 7
Enumeration Dist: No. 15

NOTE A.—The light dotted perpendicular lines, which divide the spaces intended for numbers on this Schedule, are intended to separate the units, tens, &c., from each other, and the Enumerator should be careful that the figures are written within the small spaces so formed, thus: 74, the units in the right-hand small spaces.
NOTE B.—Make an affirmative entry by a slanting line (thus /) in one of the three columns 2, 3, and 4, according as the fact is in the case of each farm—in column 2, if the occupier is the owner of the farm; in column 3, if he is the tenant at a fixed money rental; in column 4, if he conducts it for a share of the product.
NOTE C.—Enumerators will observe that there are 100 questions relating to each farm, which are arranged in four successive divisions of each schedule page.

SCHEDULE 2.—Productions of Agriculture in West Manhattan in the County of York, State of N.Y., enumerated by me on the 16th day of June, 1880. U.C. Kling, Enumerator.

Table with columns: THE PERSON WHO CONDUCTS THIS FARM, ACRES OF LAND, FARM VALUES, FENCES, LABOR, GRASS LANDS. Includes farm names like Meyers Jacob, Wilson Andrew, Barnhart Adam, etc.

Table with columns: NEAT CATTLE AND THEIR PRODUCTS, MOVEMENT, 1879, SHEEP, MOVEMENT, 1879, SWINE, MOVEMENT, 1879, POULTRY ON HAND. Includes data for working oxen, milch cows, calves, sheep, and swine.

Table with columns: CEREALS, PULSE, FIBER, SUGAR, BROOM CORN. Includes sub-sections for Barley, Buckwheat, Indian Corn, Oats, Rye, Wheat, Flax, Sorghum, and Maple.

Table with columns: HOPS, POTATOES, TOBACCO, ORCHARDS, NURSERY, VINEYARDS, MARKET GARDENS, BEES, FOREST PRODUCTS. Includes sub-sections for Apples, Peaches, and various agricultural products.

Page No. 7
Supervisor's Dist: No. 7
Enumeration Dist: No. 15

SCHEDULE 2.—Pro

Table with columns: THE PERSON WHO CONDUCTS THIS FARM. Includes farm names like McMaster, Hudson, Warner, etc.

Table with columns: NEAT CATTLE AND THEIR PRODUCTS, MOVEMENT, 1879. Includes data for working oxen, milch cows, calves, and sheep.

Table with columns: CEREALS, PULSE, FIBER, SUGAR, BROOM CORN. Includes data for various crops.

Table with columns: HOPS, POTATOES, TOBACCO, ORCHARDS, NURSERY, VINEYARDS, MARKET GARDENS, BEES, FOREST PRODUCTS. Includes data for various agricultural products.

Page No. 40

Supervisor's Dist: No. 7

Enumeration Dist: No. 15

NOTE A.—The light dotted perpendicular lines, which divide the spaces inclosed for numbers on this Schedule, are intended to separate the units, tens, &c., from each other, and the Enumerator should be careful that the figures are written within the small spaces so formed, thus: 741, the units in the right-hand small spaces.

NOTE B.—Make an affirmative entry by a slanting line (thus /) in one of the three columns 2, 3, and 4, according as the fact is in the case of each farm—in column 2, if the occupier is the owner of the farm; in column 3, if he is the tenant at a fixed money rental; in column 4, if he conducts it for a share of the product.

NOTE C.—Enumerators will observe that there are 100 questions relating to each farm, which are arranged in four successive divisions of each schedule page.

SCHEDULE 2.—Productions of Agriculture in West Manheim in the County of York, State of Penn. enumerated by me on the 17th day of June, 1880. J.C. Kling Enumerator.

Table with columns: LANDS, THE NAME, TENURE, ACRES OF LAND (Improved, Unimproved), FARM VALUES, FENCES, LABOR, GRASS LANDS, HORSES AND MULES. Includes entries for William, Henry, Adam, Michael, etc.

Table with columns: NEAT CATTLE AND THEIR PRODUCTS, MOVEMENT, 1879, SHEEP, MOVEMENT, 1879, SWINE, MOVEMENT, 1879, POULTRY ON HAND. Includes columns for Cattle of all ages, Sheep and lambs, etc.

Table with columns: CEREALS, PULSE, FIBER, SUGAR, BROOM CORN. Includes columns for Buckwheat, Indian Corn, Oats, Rye, Wheat, etc.

Table with columns: FOREST PRODUCTS, HOPS, POTATOES, TOBACCO, ORCHARDS, NURSERIES, VINEYARDS, MARKET GARDENS, BEES, FOREST PRODUCTS. Includes columns for Wax, Hops, Potatoes, Apples, Peaches, etc.

Vertical text on the left margin: to separate the units, tens, &c., formed, thus: 741, the units in the case of each farm—in column 4, if he conducts it for divisions of each schedule page. te of P. Kling Enumerator.

Page No. 8
Supervisor's Dist. No. 7
Enumeration Dist. No. 15

NOTE A.—The light dotted perpendicular lines, which divide the spaces intended for numbers on this Schedule, are intended to separate the units, tens, &c. from each other, and the Enumerator should be careful that the figures are written within the small spaces so formed, thus: 1 2 3 4 5 6 7 8 9 10 11 12 13 14 15 16 17 18 19 20 21 22 23 24 25 26 27 28 29 30 31 32 33 34 35 36 37 38 39 40 41 42 43 44 45 46 47 48 49 50 51 52 53 54 55 56 57 58 59 60 61 62 63 64 65 66 67 68 69 70 71 72 73 74 75 76 77 78 79 80 81 82 83 84 85 86 87 88 89 90 91 92 93 94 95 96 97 98 99 100

NOTE B.—Make an affirmative entry by a slanting line (thus /) in one of the three columns 2, 3, and 4, according as the fact is in the case of each farm—in column 2, if the occupier is the owner of the farm; in column 3, if he is the tenant at a fixed money rental; in column 4, if he conducts it for a share of the product.

NOTE C.—Enumerators will observe that there are 100 questions relating to each farm, which are arranged in four successive divisions of each schedule page.

SCHEDULE 2.—Productions of Agriculture in West Manhattan in the County of York, State of N.Y., enumerated by me on the 18 day of June, 1880. J. C. Kelly, Enumerator.

Table with columns: OF THE PERSON WHO CONDUCTS THIS FARM (THE NAME, TENURE), ACRES OF LAND (IMPROVED, UNIMPROVED), FARM VALUES (Dollars), FENCES (Dollars), LABOR (Dollars), GRASS LANDS (ACREAGE 1879, PRODUCTS HARVESTED IN 1879), and HORSES AND CATTLE ON HAND JUNE 1, 1880.

Table with columns: ON HAND JUNE 1, 1880 (Working oxen, Milch cows, Other), MOVEMENT, 1879 (Cattle of all ages, Sheep, Swine), and MOVEMENT, 1880 (Cattle of all ages, Sheep, Swine).

Table with columns: CEREALS (BARLEY, BUCKWHEAT, INDIAN CORN, OATS, RYE, WHEAT), PULSE (Beans, Peas), FIBER (FLAX, Hemp), SUGAR (SORGHUM, MAPLE), and BROOM CORN.

Table with columns: HOPS, POTATOES (Irish, Sweet), TOBACCO, ORCHARDS (APPLE, PEACH), NURSERIES, VINEYARDS, MARKET GARDENS, BEES, and FOREST PRODUCTS.

Page No. 9
Supervisor's Dist. No. 7
Enumeration Dist. No. 15

SCHEDULE 2.—Productions of Agriculture in West Manhattan in the County of York, State of N.Y., enumerated by me on the 18 day of June, 1880. J. C. Kelly, Enumerator.

Table with columns: OF THE PERSON WHO CONDUCTS THIS FARM (THE NAME, TENURE), ACRES OF LAND (IMPROVED, UNIMPROVED), FARM VALUES (Dollars), FENCES (Dollars), LABOR (Dollars), GRASS LANDS (ACREAGE 1879, PRODUCTS HARVESTED IN 1879), and HORSES AND CATTLE ON HAND JUNE 1, 1880.

Table with columns: ON HAND JUNE 1, 1880 (Working oxen, Milch cows, Other), MOVEMENT, 1879 (Cattle of all ages, Sheep, Swine), and MOVEMENT, 1880 (Cattle of all ages, Sheep, Swine).

Table with columns: CEREALS (BARLEY, BUCKWHEAT, INDIAN CORN, OATS, RYE, WHEAT), PULSE (Beans, Peas), FIBER (FLAX, Hemp), SUGAR (SORGHUM, MAPLE), and BROOM CORN.

Table with columns: HOPS, POTATOES (Irish, Sweet), TOBACCO, ORCHARDS (APPLE, PEACH), NURSERIES, VINEYARDS, MARKET GARDENS, BEES, and FOREST PRODUCTS.

Page No. 42

Supervisor's Dist: No. 1

Enumeration Dist: No. 15

NOTE A.—The light dotted perpendicular lines, which divide the spaces intended for numbers on this Schedule, are intended to separate the units, tens, &c., from each other, and the Enumerator should be careful that the figures are written within the small spaces so formed, thus: 74, the units in the right-hand small spaces.

NOTE B.—Make an affirmative entry by a slanting line (thus /) in one of the three columns 2, 3, and 4, according as the fact is in the case of each farm—in column 2, if the occupier is the owner of the farm; in column 3, if he is the tenant at a fixed money rental; in column 4, if he conducts it for a share of the product.

NOTE C.—Enumerators will observe that there are 100 questions relating to each farm, which are arranged in four successive divisions of each schedule page.

SCHEDULE 2.—Productions of Agriculture in West Manhattan in the County of York, State of New York, enumerated by me on the 15-17 day of June, 1880. J. C. King, Enumerator.

Table with columns: Grass Lands, Hay, Clover Seed, Grass Seed, Horses of all ages on hand June 1, 1880, Mules and Asses of all ages on hand June 1, 1880.

Main table with columns: THE NAME, TENURE, IMPROVED, UNIMPROVED, FARM VALUES, FENCES, LABOR, GRASS LANDS, HORSES AND MULES AND ASSES.

Table with columns: SWINE, POULTRY ON HAND JUNE 1ST, 1880, EGGS PRODUCED IN 1879.

Table with columns: NEAT CATTLE AND THEIR PRODUCTS, MOVEMENT, 1879, SHEEP, MOVEMENT, 1879, SWINE, POULTRY ON HAND JUNE 1ST, 1880, EGGS PRODUCED IN 1879.

Table with columns: MAPLE—1879, BROOM CORN, 1879.

Table with columns: CEREALS, PULSE, FIBER, SUGAR, BROOM CORN, 1879.

Table with columns: BEES—1879, FOREST PRODUCTS.

Table with columns: HOPS, POTATOES, TOBACCO, ORCHARDS—1879, NURSERIES, VINEYARDS, MARKET GARDENS, BEES—1879, FOREST PRODUCTS.

Page No. 11

Supervisor's Dist. No. 1

Enumeration Dist. No. 15

NOTE A.—The light dotted perpendicular lines, which divide the spaces intended for numbers on this Schedule, are intended to separate the units, tens, &c., from each other, and the Enumerator should be careful that the figures are written within the small spaces so formed, thus: 741, the units in the right-hand small spaces.

NOTE B.—Make an affirmative entry by a slanting line (thus /) in one of the three columns 2, 3, and 4, according as the fact is in the case of each farm—in column 2, if the occupier is the owner of the farm; in column 3, if he is the tenant at a fixed money rental; in column 4, if he conducts it for a share of the product.

NOTE C.—Enumerators will observe that there are 100 questions relating to each farm, which are arranged in four successive divisions of each schedule page.

SCHEDULE 2.—Productions of Agriculture in West Montclair in the County of York, State of New York, enumerated by me on the 11th day of June, 1880. W. C. King, Enumerator.

Table with columns: OF THE PERSON WHO CONDUCTS THIS FARM, ACRES OF LAND, FARM VALUES, FENCES, LABOR, GRASS LANDS. Includes farm names like 'The name of the farm' and various numerical data.

Table with columns: NEAT CATTLE AND THEIR PRODUCTS, MOVEMENT, 1879, SHEEP, MOVEMENT, 1879, SWINE, MOVEMENT, 1879. Includes sub-sections for cattle, sheep, and swine with detailed movement data.

Table with columns: CEREALS, PULSE, FIBER, SUGAR. Includes sub-sections for barley, buckwheat, Indian corn, oats, rye, wheat, flax, hemp, sorghum, maple, broom corn.

Table with columns: HOPS, POTATOES, TOBACCO, ORCHARDS—1879, NURSERIES, VINEYARDS, MARKET GARDENS, BEES—1879, FOREST PRODUCTS. Includes sub-sections for hops, potatoes, tobacco, orchards, nurseries, vineyards, market gardens, bees, forest products.

Page No. 11
Supervisor's Dist. No. 1
Enumeration Dist. No. 15

SCHEDULE 2.—Pr

Table with columns: OF THE PERSON WHO COND, THE NAME. Includes farm names like 'The name of the farm' and various numerical data.

Page No. 11

Supervisor's Dist: No. 1

Enumeration Dist: No. 13

NOTE A.—The light dotted perpendicular lines, which divide the spaces intended for numbers on this Schedule, are intended to separate the units, tens, &c., from each other, and the Enumerator should be careful that the figures are written within the small spaces so formed, thus: 74, the units in the right-hand small spaces.

NOTE B.—Make an affirmative entry by a slanting line (thus /) in one of the three columns 2, 3, and 4, according as the fact is in the case of each farm—in column 2, if the occupier is the owner of the farm; in column 3, if he is the tenant at a fixed money rental; in column 4, if he conducts it for a share of the product.

NOTE C.—Enumerators will observe that there are 100 questions relating to each farm, which are arranged in four successive divisions of each schedule page.

SCHEDULE 2.—Productions of Agriculture in West Manhattan Town in the County of York, State of New York, enumerated by me on the 12 day of June, 1880.

Table with columns: OF THE PERSON WHO CONDUCTS THIS FARM, ACRES OF LAND, FARM VALUES, FENCES, LABOR, GRASS LANDS. Includes farm names like 'Mason John D' and 'Mason John B'.

Table with columns: NEAT CATTLE AND THEIR PRODUCTS, MOVEMENT, 1879, SHEEP, MOVEMENT, 1879, SWINE, MOVEMENT, 1879, POULTRY ON HAND. Includes data for various farm animals.

Table with columns: CEREALS, PULSE, FIBER, SUGAR, BROOM CORN. Includes data for crops like wheat, corn, and flax.

Table with columns: HOPS, POTATOES, TOBACCO, ORCHARDS, NURSERIES, VINEYARDS, MARKET GARDENS, BEES, FOREST PRODUCTS. Includes data for various agricultural products.

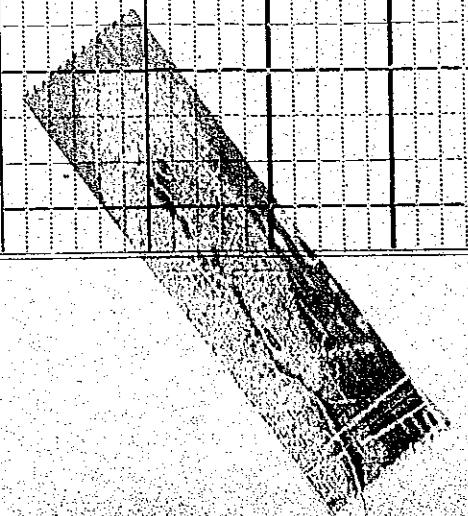
Table with columns: PRODUCTS HARVESTED IN 1879, Clover Seed, Grass Seed, Horses, Mules and Asses.

Table with columns: POULTRY ON HAND, Hatching, Eggs produced in 1879, Ducks, Geese, Chickens.

Table with columns: MAIZE-1879, BROOM CORN, 1879, Area, Crop, Galls, Acs, Lbs.

Table with columns: HOPS-1879, FOREST PRODUCTS, Wax, Amount of wood cut, Value of all forest products.

18



Page No. 12

Supervisor's Dist. No. 9

Enumeration Dist. No. 13

NOTE A.—The light dotted perpendicular lines, which divide the spaces intended for numbers on this Schedule, are intended to separate the units, tens, &c. from each other, and the Enumerator should be careful that the figures are written within the small spaces so formed, thus: 7 4 1, the units in the right-hand small spaces.

NOTE B.—Make an affirmative entry by a slanting line (thus /) in one of the three columns 2, 3, and 4, according as the fact is in the case of each farm—in column 2, if the occupier is the owner of the farm; in column 3, if he is the tenant at a fixed money rental; in column 4, if he conducts it for a share of the product.

NOTE C.—Enumerators will observe that there are 100 questions relating to each farm, which are arranged in four successive divisions of each schedule page.

SCHEDULE 2.—Productions of Agriculture in 21 1/2 Miles in the County of Union, State of New York, enumerated by me on the 2 day of June, 1880.

Enumerator.

Table with columns: OF THE PERSON WHO CONDUCTS THIS FARM, ACRES OF LAND, FARM VALUES, FENCES, LABOR, GRASS LANDS. Includes farm names like 'Superior' and 'Hill'.

Table with columns: NEAT CATTLE AND THEIR PRODUCTS, SHEEP, SWINE, POULTRY ON HAND. Includes sub-sections for 'ON HAND JUNE 1, 1880' and 'MOVEMENT, 1879'.

Table with columns: CEREALS, PULSE, FIBER, SUGAR, BROOM CORN. Includes sub-sections for 'BARLEY', 'BUCKWHEAT', 'INDIAN CORN', etc.

Table with columns: HOPS, POTATOES, TOBACCO, ORCHARDS, NURSERIES, VINEYARDS, MARKET GARDENS, BEES, FOREST PRODUCTS. Includes sub-sections for 'APPLE', 'PEACH', 'GRAPES', etc.

Page No. 1

Supervisor's Dist. No. 7

Enumeration Dist. No. 16

SCHEDULE 2.—

Table with columns: OF THE PERSON WHO CONDUCTS THIS FARM, THE NAME. Includes names like 'Ernie L.', 'Bostner Jacob', 'Miller D.'.

Table with columns: ON HAND JUNE 1, 1880. Includes sub-sections for 'Working cows', 'Milk cows', 'Other'.

Table with columns: BARLEY, BUCKWHEAT. Includes sub-sections for 'Area', 'Crop'.

Table with columns: HOPS, POTATOES. Includes sub-sections for 'Area', 'Crop'.