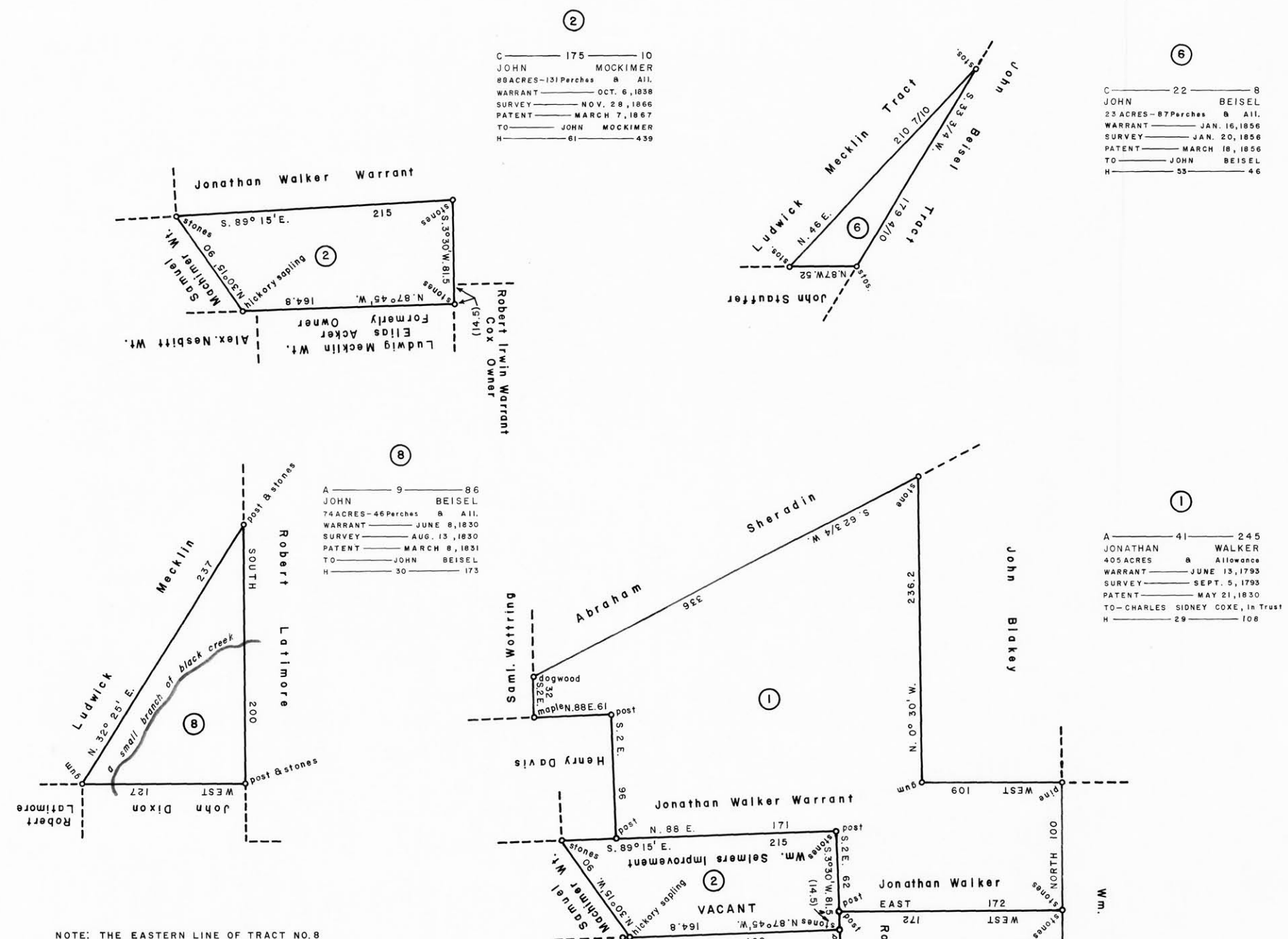
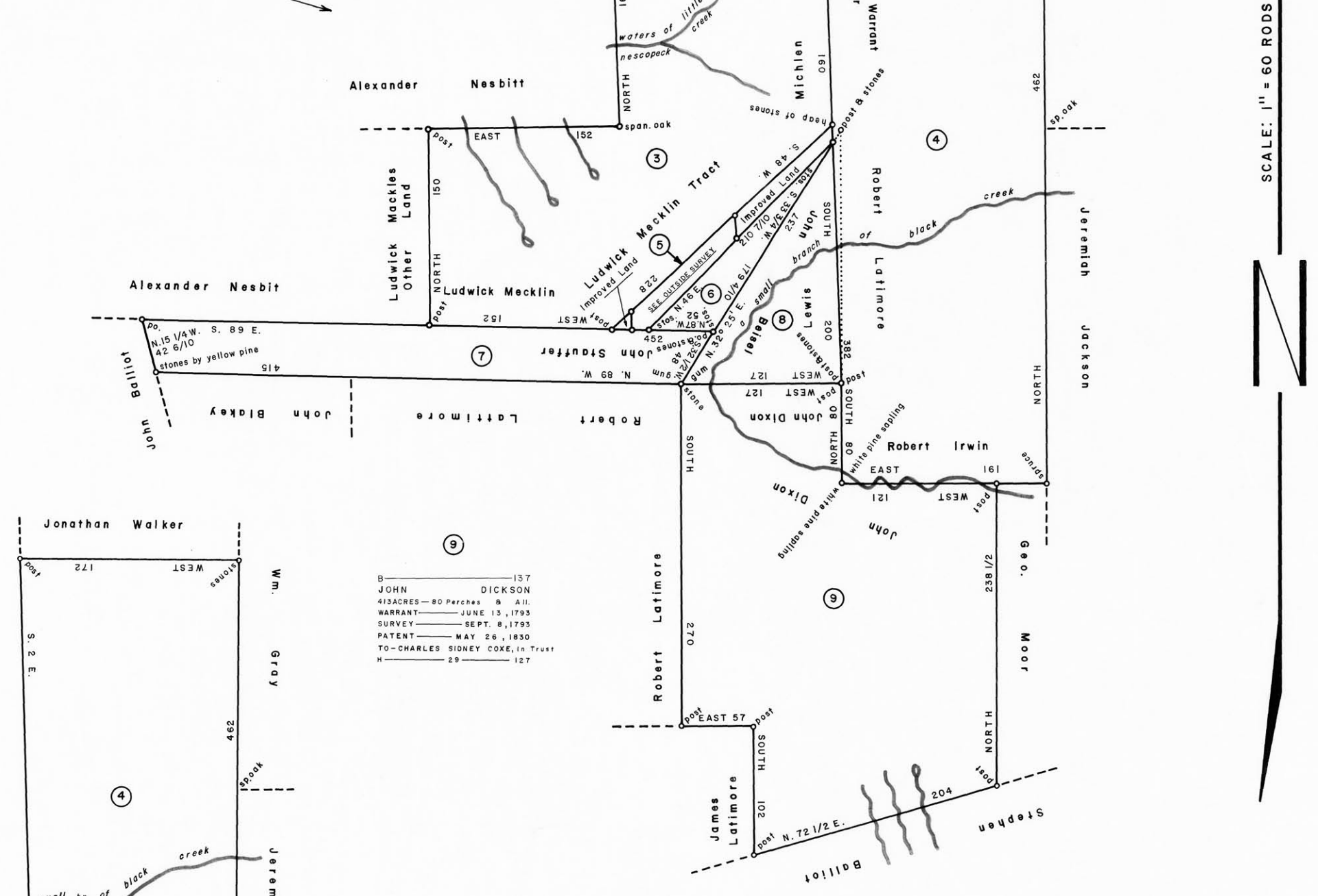
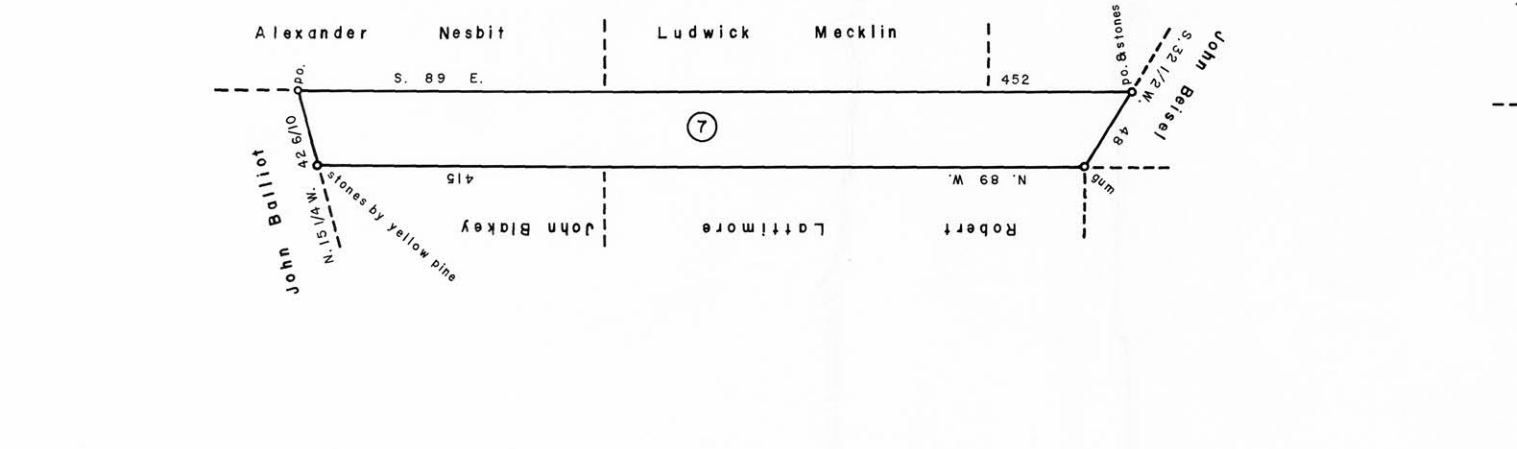
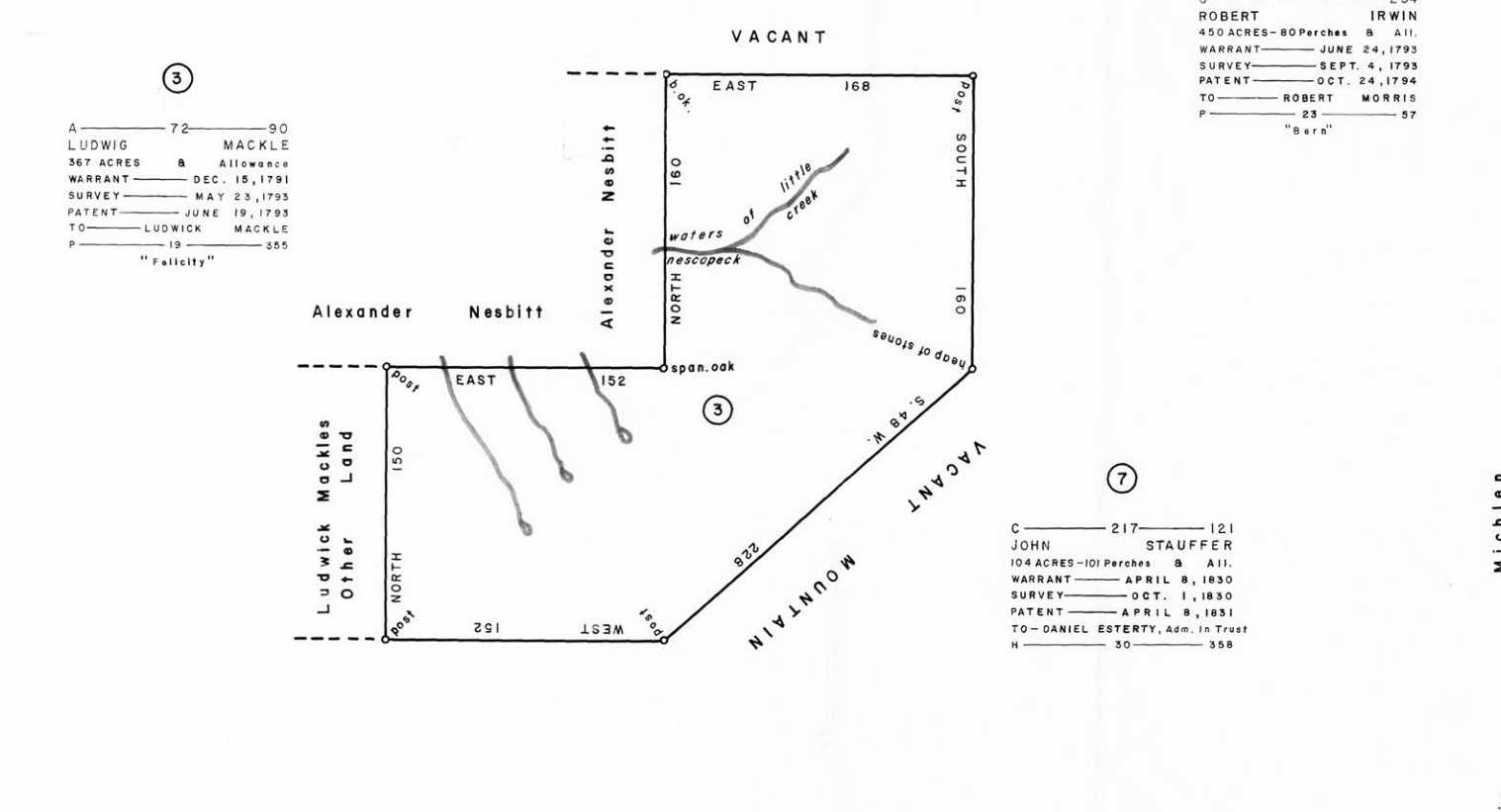


D 93 69  
PA. STATE FORESTRY RESERVATION COMMISSION  
10 ACRES-145 Perches & All.  
WARRANT — APRIL 4, 1910  
SURVEY — APRIL 14, 1923  
PATENT — JUNE 1, 1923  
TO — PA. STATE FORESTRY RESERVATION COMMISSION  
H 78 379



NOTE: THE EASTERN LINE OF TRACT NO. 8 OVERLAPS THE WESTERN LINE OF TRACT NO. 4. THERE EXISTS A 2° 20' DIFFERENCE IN THESE TWO SURVEYED LINES OVER A DISTANCE OF 200 RODS OR 3300 FT., WITH TRACT NO. 8 BEING THE SENIOR TRACT.

NOTE: THE ABOVE DESCRIBED TRACT OF LAND, LOCATED IN BUTLER TOWNSHIP, LUZERNE COUNTY, WAS SURVEYED BY CHARLES S. MILES (WHO WAS THE COUNTY SURVEYOR OF LUZERNE COUNTY) ON THE 14th DAY OF APRIL 1923. THE ABOVE DESCRIBED TRACT OF LAND WAS THE SURVEYED PROOF USED TO JUSTIFY THE ISSUING OF A PATENT TO THE PENNSYLVANIA STATE FOREST COMMISSION, BEING PATENT BOOK — H-78 PAGE 379, FOR 10 ACRES-145 Perches & Allowance. THIS PATENT IS DATED THE 1st DAY OF JUNE 1923. THE WARRANT NO. S-517 LUZERNE CO. STATES: "WHEREAS, IN PURSUANCE OF AN ACT OF THE GENERAL ASSEMBLY OF THE COMMONWEALTH OF PENNSYLVANIA, ENTITLED "AN ACT RELATING TO THE GRANTING OF TITLES BY THE COMMONWEALTH TO VACANT OR UNAPPROPRIATED LANDS," ETC., APPROVED THE 3rd DAY OF MAY, 1909, AND IN CONFORMITY WITH OTHER LAWS RELATING THERETO, DANIEL D. TREXLER-ET-AL, —OF-ALLENTOWN—COUNTY OF-LEHIGH—HAS APPLIED FOR A WARRANT FOR—17—ACRES AND—135—Perches—OF UNIMPROVED VACANT LAND SITUATED IN THE TOWNSHIP OF BUTLER AND COUNTY OF LUZERNE; BOUNDED ON THE EAST BY LAND WARRANTED IN THE NAME OF JOHN REISEL UNDER DATE OF, JANUARY 16, 1856; ON THE NORTH AND WEST BY LAND WARRANTED IN THE NAME OF LUDWIG MICKLE, UNDER DATE OF DECEMBER 15, 1791; AND ON THE SOUTH BY LAND WARRANTED IN THE NAME OF JOHN STAUFFER, UNDER DATE OF APRIL 8, 1830; —AND WHEREAS, BY DIRECTION OF SAID ACT THE OPTION TO ACQUIRE THE ABOVE DESCRIBED LAND HAS BEEN GIVEN THE STATE FORESTRY RESERVATION COMMISSION, THE SAID STATE FORESTRY RESERVATION COMMISSION HAVING, BY PAPER FILED IN THE DEPARTMENT OF INTERNAL AFFAIRS, EXPRESSED ITS DESIRE TO ACQUIRE THE SAID LAND FOR FOREST CULTURE AND FOREST RESERVATION." THE WARRANT (NO. S-517) WAS DIRECTED TO FRED. A. YOUNG THE LUZERNE COUNTY SURVEYOR, ON THE 4th DAY OF APRIL A. D. 1910. THE SURVEY WAS MADE 13 YEARS LATER BY CHARLES S. MILES, C. S., ON THE 14th DAY OF APRIL 1923. HE RETURNED ONLY 10 ACRES-145 Perches & All. BECAUSE TWO SMALL AREAS, ON THE NORTH AND SOUTH HAD SINCE 1910 BEEN IMPROVED AS SHOWN ON ABOVE SURVEY.



A CONNECTED DRAFT of nine (9) tracts of land, which when surveyed, were situate as follows: one (1) in Sugarloaf Township, Northumberland and Luzerne Counties; three (3) in Sugarloaf Township, Luzerne County; three (3) in Butler Township, Luzerne County; one (1) in Nescopeck Township, Luzerne County; one (1) on the waters of Black Creek, Northumberland County. The draft has been constructed from and compared with the original drafts on file in the Bureau of Land Records, Department of Community Affairs, Commonwealth of Pennsylvania, under the direction of Edward D. Price, Director.

IN TESTIMONY WHEREOF: I have hereunto set my hand and caused the seal of the said Department to be affixed at Harrisburg, Pennsylvania, this nineteenth day of September A.D., one thousand nine hundred and seventy seven.



WILLIAM H. WILCOX  
Secretary of Community Affairs

By: *[Signature]*  
A. L. HYDEMAN, JR., Executive Deputy Secretary

SCALE: 1" = 60 RODS